



# SZABO SCANDIC

Part of Europa Biosite

## Produktinformation



Forschungsprodukte & Biochemikalien



Zellkultur & Verbrauchsmaterial



Diagnostik & molekulare Diagnostik



Laborgeräte & Service

Weitere Information auf den folgenden Seiten!  
See the following pages for more information!



### Lieferung & Zahlungsart

siehe unsere [Liefer- und Versandbedingungen](#)

### Zuschläge

- Mindermengenzuschlag
- Trockeneiszuschlag
- Gefahrgutzuschlag
- Expressversand

### SZABO-SCANDIC HandelsgmbH

Quellenstraße 110, A-1100 Wien

T. +43(0)1 489 3961-0

F. +43(0)1 489 3961-7

[mail@szabo-scandic.com](mailto:mail@szabo-scandic.com)

[www.szabo-scandic.com](http://www.szabo-scandic.com)

[linkedin.com/company/szaboscandic](https://www.linkedin.com/company/szaboscandic) 

## RHOA & DAAM1 Protein Protein Interaction Antibody Pair

Catalog # : DI0603

規格 : [ 1 Set ]

List All

### Specification

**Product Description:** This protein protein interaction antibody pair set comes with two antibodies to detect the protein-protein interaction, one against the RHOA protein, and the other against the DAAM1 protein for use in *in situ* Proximity Ligation Assay. See Publication Reference below.

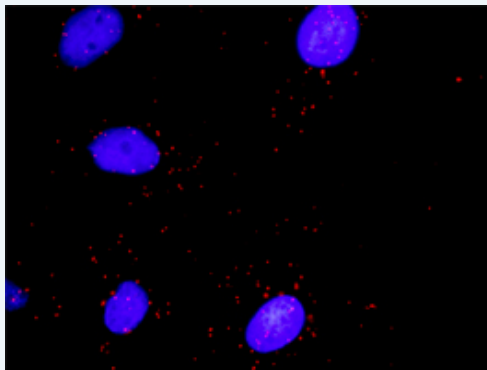
### Application Image

*In situ* Proximity Ligation Assay (Cell)



**Reactivity:** Human

**Quality Control Testing:** Protein protein interaction immunofluorescence result.



Representative image of Proximity Ligation Assay of protein-protein interactions between RHOA and DAAM1. HeLa cells were stained with anti-RHOA rabbit purified polyclonal antibody 1:1200 and anti-DAAM1 mouse monoclonal antibody 1:50. Each red dot represents the detection of protein-protein interaction complex. The images were analyzed using an optimized freeware ([BlobFinder](#)) download from The Centre for Image Analysis at Uppsala University.

**Supplied Product:** Antibody pair set content:  
 1. RHOA rabbit purified polyclonal antibody (20 ug)  
 2. DAAM1 mouse monoclonal antibody (40 ug)  
 \*Reagents are sufficient for at least 30-50 assays using recommended protocols.

**Storage Instruction:** Store reagents of the antibody pair set at -20°C or lower. Please aliquot to avoid repeated freeze thaw cycle. Reagents should be returned to -

20°C storage immediately after use.

MSDS:  [Download](#)

### Publication Reference

1. [An analysis of protein-protein interactions in cross-talk pathways reveals CRKL as a novel prognostic marker in hepatocellular carcinoma.](#)  
Liu CH, Chen TC, Chau GY, Jan YH, Chen CH, Hsu CN, Lin KT, Juang YL, Lu PJ, Cheng HC, Chen MH, Chang CF, Ting YS, Kao CY, Hsiao M, Huang CY. Mol Cell Proteomics. 2013 Feb 8. [Epub ahead of print]

### Applications

#### *In situ* Proximity Ligation Assay (Cell)

[RHOA](#) [DAAM1](#)

### Gene Information

Entrez GeneID: [387](#)

Gene Name: RHOA

Gene Alias: ARH12,ARHA,RHO12,RHOH12

Gene Description: ras homolog gene family, member A

Omim ID: [165390](#)

Gene Ontology: [Hyperlink](#)

Other Designations: Aplysia ras-related homolog 12, oncogene RHO H12, small GTP binding protein RhoA

### Gene Information

Entrez GeneID: [23002](#)

Gene Name: DAAM1

Gene Alias: FLJ41657,KIAA0666

Gene Description: dishevelled associated activator of morphogenesis 1

Omim ID: [606626](#)

Gene Ontology: [Hyperlink](#)

**Gene Summary:** Functions of the cell cortex, including motility, adhesion, and cytokinesis, are mediated by the reorganization of the actin cytoskeleton and recent evidence suggests a role for the Formin homology (FH) proteins in these processes. The protein encoded by this gene contains FH domains and belongs to a novel FH protein subfamily implicated in cell polarity. Wnt/Fz signaling activates the small GTPase Rho, a key regulator of cytoskeleton architecture, to control cell polarity and movement during development. Activation requires Dvl-Rho complex formation, an assembly mediated by this gene product, which is thought to function as a scaffolding protein. Evidence of alternative splicing has been observed for this gene but the full-length nature of these variants has not been determined. [provided by RefSeq]

Other Designations: OTTHUMP00000179033, dishevelled-associated activator of morphogenesis 1

---

[服務條款](#) | [隱私權政策](#) | [著作及商標](#) | [網站地圖](#)

©2016 亞諾法生技股份有限公司 Abnova Corporation. 版權所有.