



SZABO SCANDIC

Part of Europa Biosite

Produktinformation



Forschungsprodukte & Biochemikalien



Zellkultur & Verbrauchsmaterial



Diagnostik & molekulare Diagnostik



Laborgeräte & Service

Weitere Information auf den folgenden Seiten!
See the following pages for more information!



Lieferung & Zahlungsart

siehe unsere [Liefer- und Versandbedingungen](#)

Zuschläge

- Mindermengenzuschlag
- Trockeneiszuschlag
- Gefahrgutzuschlag
- Expressversand

SZABO-SCANDIC HandelsgmbH

Quellenstraße 110, A-1100 Wien

T. +43(0)1 489 3961-0

F. +43(0)1 489 3961-7

mail@szabo-scandic.com

www.szabo-scandic.com

[linkedin.com/company/szaboscandic](https://www.linkedin.com/company/szaboscandic) 

BCR & PIK3CG Protein Protein Interaction Antibody Pair

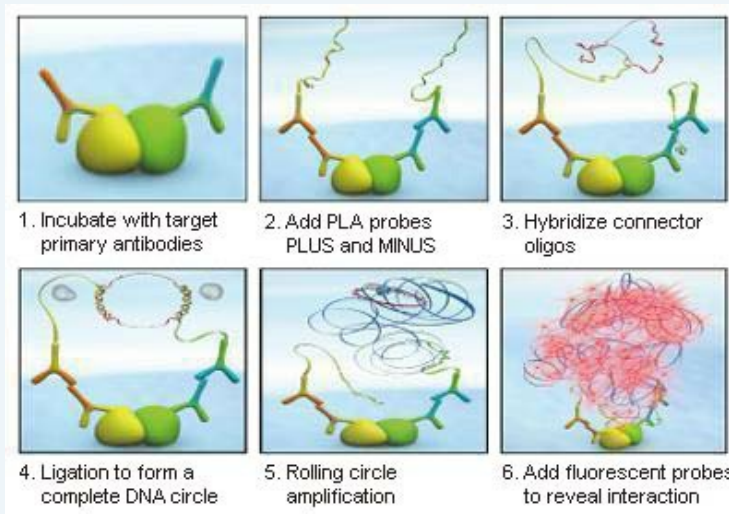
Catalog # : DI0613

規格 : [1 Set]

List All

Specification

Product Description: This protein protein interaction antibody pair set comes with two antibodies to detect the protein-protein interaction, one against the BCR protein, and the other against the PIK3CG protein for use in *in situ* Proximity Ligation Assay. See Publication Reference below.

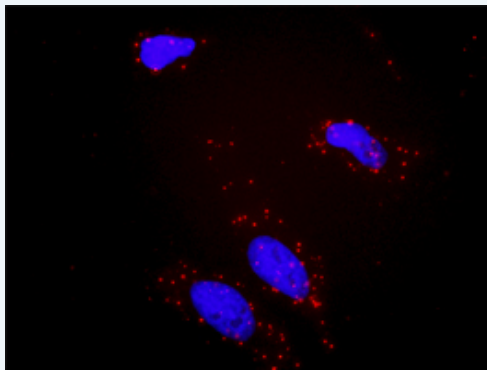


Application Image

In situ Proximity Ligation Assay (Cell)

Reactivity: Human

Quality Control Testing: Protein protein interaction immunofluorescence result.



Representative image of Proximity Ligation Assay of protein-protein interactions between BCR and PIK3CG. HeLa cells were stained with anti-BCR rabbit purified polyclonal antibody 1:1200 and anti-PIK3CG mouse monoclonal antibody 1:50. Each red dot represents the detection of protein-protein interaction complex. The images were analyzed using an optimized freeware ([BlobFinder](#)) download from The Centre for Image Analysis at Uppsala University.

Supplied Product: Antibody pair set content:
 1. BCR rabbit purified polyclonal antibody (20 ug)
 2. PIK3CG mouse monoclonal antibody (40 ug)
 *Reagents are sufficient for at least 30-50 assays using recommended protocols.

Storage Instruction: Store reagents of the antibody pair set at -20°C or lower. Please aliquot to avoid repeated freeze thaw cycle. Reagents should be returned to -

20°C storage immediately after use.

MSDS:

 [Download](#)

Publication Reference

1. [An analysis of protein-protein interactions in cross-talk pathways reveals CRKL as a novel prognostic marker in hepatocellular carcinoma.](#)
Liu CH, Chen TC, Chau GY, Jan YH, Chen CH, Hsu CN, Lin KT, Juang YL, Lu PJ, Cheng HC, Chen MH, Chang CF, Ting YS, Kao CY, Hsiao M, Huang CY. Mol Cell Proteomics. 2013 Feb 8. [Epub ahead of print]

Applications

In situ Proximity Ligation Assay (Cell)

[BCR](#) [PIK3CG](#)

Gene Information

Entrez GeneID: [613](#)

Gene Name: BCR

Gene Alias: ALL,BCR-ABL1,BCR1,CML,D22S11,D22S662,FLJ16453,PHL

Gene Description: breakpoint cluster region

Omim ID: [151410](#), [608232](#)

Gene Ontology: [Hyperlink](#)

Gene Summary: A reciprocal translocation between chromosomes 22 and 9 produces the Philadelphia chromosome, which is often found in patients with chronic myelogenous leukemia. The chromosome 22 breakpoint for this translocation is located within the BCR gene. The translocation produces a fusion protein which is encoded by sequence from both BCR and ABL, the gene at the chromosome 9 breakpoint. Although the BCR-ABL fusion protein has been extensively studied, the function of the normal BCR gene product is not clear. The protein has serine/threonine kinase activity and is a GTPase-activating protein for p21rac. Two transcript variants encoding different isoforms have been found for this gene. [provided by RefSeq]

Other Designations: bcr-abl1 e14a3 chimeric protein

Gene Information

Entrez GeneID: [5294](#)

Gene Name: PIK3CG

Gene Alias: PI3CG,PI3K,PI3Kgamma,PIK3

Gene Description: phosphoinositide-3-kinase, catalytic, gamma polypeptide

Omim ID: [601232](#)

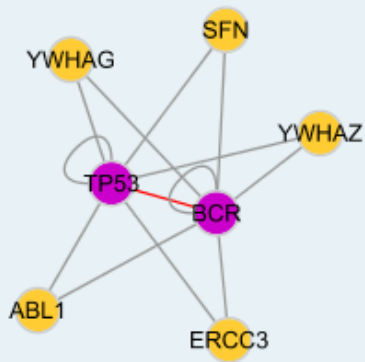
Gene Ontology: [Hyperlink](#)

Gene Summary: This gene encodes a protein that belongs to the pi3/pi4-kinase family of proteins. The gene product is an enzyme that phosphorylates phosphoinositides on the 3-hydroxyl group of the inositol ring. It is an

important modulator of extracellular signals, including those elicited by E-cadherin-mediated cell-cell adhesion, which plays an important role in maintenance of the structural and functional integrity of epithelia. In addition to its role in promoting assembly of adherens junctions, the protein is thought to play a pivotal role in the regulation of cytotoxicity in NK cells. The gene is located in a commonly deleted segment of chromosome 7 previously identified in myeloid leukemias. [provided by RefSeq

Other Designations: 1-phosphatidylinositol 3-kinase,PI3-kinase,PTDINS-3-kinase,p110-gamma,phosphatidylinositol 3 kinase gamma, p110 gamma,phosphatidylinositol 3-kinase catalytic 110-kD gamma,phosphatidylinositol 3-kinase, catalytic, gamma polypeptide,phosphoinositide-3-kinas

Interactome



[服務條款](#) | [隱私權政策](#) | [著作及商標](#) | [網站地圖](#)

©2016 亞諾法生技股份有限公司 Abnova Corporation. 版權所有.