



SZABO SCANDIC

Part of Europa Biosite

Produktinformation



Forschungsprodukte & Biochemikalien



Zellkultur & Verbrauchsmaterial



Diagnostik & molekulare Diagnostik



Laborgeräte & Service

Weitere Information auf den folgenden Seiten!
See the following pages for more information!



Lieferung & Zahlungsart

siehe unsere [Liefer- und Versandbedingungen](#)

Zuschläge

- Mindermengenzuschlag
- Trockeneiszuschlag
- Gefahrgutzuschlag
- Expressversand

SZABO-SCANDIC Handels GmbH

Quellenstraße 110, A-1100 Wien

T. +43(0)1 489 3961-0

F. +43(0)1 489 3961-7

mail@szabo-scandic.com

www.szabo-scandic.com

[linkedin.com/company/szaboscandic](https://www.linkedin.com/company/szaboscandic) 

CDC42 & MAP3K11 Protein Protein Interaction Antibody Pair

Catalog # : DI0615

規格 : [1 Set]

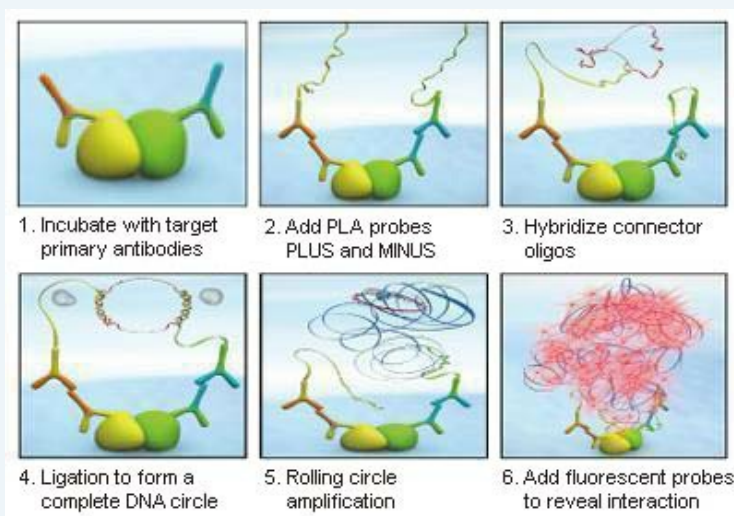
[List All](#)

Specification

Product Description: This protein protein interaction antibody pair set comes with two antibodies to detect the protein-protein interaction, one against the CDC42 protein, and the other against the MAP3K11 protein for use in *in situ* Proximity Ligation Assay. See Publication Reference below.

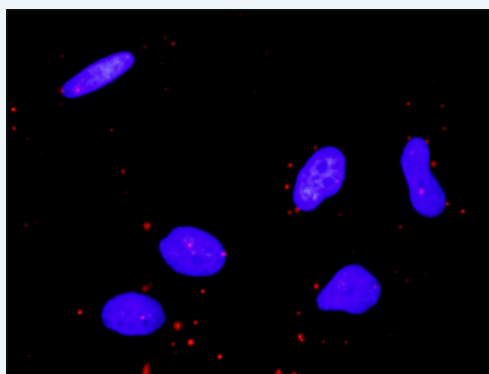
Application Image

In situ Proximity Ligation Assay (Cell)



Reactivity: Human

Quality Control Testing: Protein protein interaction immunofluorescence result.



Representative image of Proximity Ligation Assay of protein-protein interactions between CDC42 and MAP3K11. HeLa cells were stained with anti-CDC42 rabbit purified polyclonal antibody 1:1200 and anti-MAP3K11 mouse monoclonal antibody 1:50. Each red dot represents the detection of protein-protein interaction complex. The images were analyzed using an optimized freeware ([BlobFinder](#)) download from The Centre for Image Analysis at Uppsala University.

Supplied Product: Antibody pair set content:
 1. CDC42 rabbit purified polyclonal antibody (20 ug)
 2. MAP3K11 mouse monoclonal antibody (40 ug)
 *Reagents are sufficient for at least 30-50 assays using recommended protocols.

Storage Instruction: Store reagents of the antibody pair set at -20°C or lower. Please aliquot to avoid repeated freeze thaw cycle. Reagents should be returned to -

MSDS:[Download](#)**Publication Reference**

1. An analysis of protein-protein interactions in cross-talk pathways reveals CRKL as a novel prognostic marker in hepatocellular carcinoma. Liu CH, Chen TC, Chau GY, Jan YH, Chen CH, Hsu CN, Lin KT, Juang YL, Lu PJ, Cheng HC, Chen MH, Chang CF, Ting YS, Kao CY, Hsiao M, Huang CY. Mol Cell Proteomics. 2013 Feb 8. [Epub ahead of print]

Applications***In situ* Proximity Ligation Assay (Cell)**[CDC42](#) [MAP3K11](#)**Gene Information****Entrez GeneID:** [998](#)**Gene Name:** CDC42**Gene Alias:** CDC42Hs,G25K**Gene Description:** cell division cycle 42 (GTP binding protein, 25kDa)**Omim ID:** [116952](#)**Gene Ontology:** [Hyperlink](#)

Gene Summary: The protein encoded by this gene is a small GTPase of the Rho-subfamily, which regulates signaling pathways that control diverse cellular functions including cell morphology, migration, endocytosis and cell cycle progression. This protein is highly similar to *Saccharomyces cerevisiae* Cdc 42, and is able to complement the yeast *cdc42-1* mutant. The product of oncogene Dbl was reported to specifically catalyze the dissociation of GDP from this protein. This protein could regulate actin polymerization through its direct binding to Neural Wiskott-Aldrich syndrome protein (N-WASP), which subsequently activates Arp2/3 complex. Alternative splicing of this gene results in multiple transcript variants. [provided by RefSeq]

Other Designations: GTP-binding protein, 25kD,OTTHUMP00000002834,OTTHUMP00000002926,cell division cycle 42,cell division cycle 42 (GTP binding protein, 25kD),cell division cycle 42 (GTP-binding protein, 25kD),dJ224A6.1.1 (cell division cycle 42 (GTP-binding protein, 25kD)),d

Gene Information**Entrez GeneID:** [4296](#)**Gene Name:** MAP3K11**Gene Alias:** MGC17114,MLK-3,MLK3,PTK1,SPRK**Gene Description:** mitogen-activated protein kinase kinase kinase 11**Omim ID:** [600050](#)**Gene Ontology:** [Hyperlink](#)

Gene Summary: The protein encoded by this gene is a member of the serine/threonine kinase family. This kinase contains a SH3 domain and a leucine zipper-basic motif. This kinase preferentially activates MAPK8/JNK kinase, and functions as a positive regulator of JNK signaling pathway. This kinase can directly phosphorylate, and activates I κ B kinase alpha and beta, and is found to be involved in the transcription activity of NF- κ B mediated by Rho family GTPases and CDC42. [provided by RefSeq]

Other SH3 domain-containing proline-rich kinase,mixed lineage kinase
Designations: 3,protein-tyrosine kinase PTK1

[服務條款](#) | [隱私權政策](#) | [著作及商標](#) | [網站地圖](#)

©2016 亞諾法生技股份有限公司 Abnova Corporation. 版權所有.