



# SZABO SCANDIC

Part of Europa Biosite

## Produktinformation



Forschungsprodukte & Biochemikalien



Zellkultur & Verbrauchsmaterial



Diagnostik & molekulare Diagnostik



Laborgeräte & Service

Weitere Information auf den folgenden Seiten!  
See the following pages for more information!



### Lieferung & Zahlungsart

siehe unsere [Liefer- und Versandbedingungen](#)

### Zuschläge

- Mindermengenzuschlag
- Trockeneiszuschlag
- Gefahrgutzuschlag
- Expressversand

### SZABO-SCANDIC HandelsgmbH

Quellenstraße 110, A-1100 Wien

T. +43(0)1 489 3961-0

F. +43(0)1 489 3961-7

[mail@szabo-scandic.com](mailto:mail@szabo-scandic.com)

[www.szabo-scandic.com](http://www.szabo-scandic.com)

[linkedin.com/company/szaboscandic](https://www.linkedin.com/company/szaboscandic) 

## PDGFRB & FLT1 Protein Protein Interaction Antibody Pair

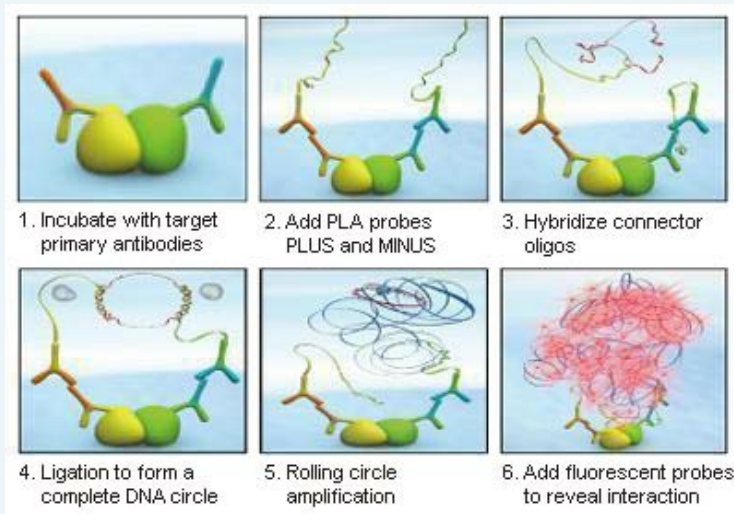
Catalog # : DI0624

規格 : [ 1 Set ]

List All

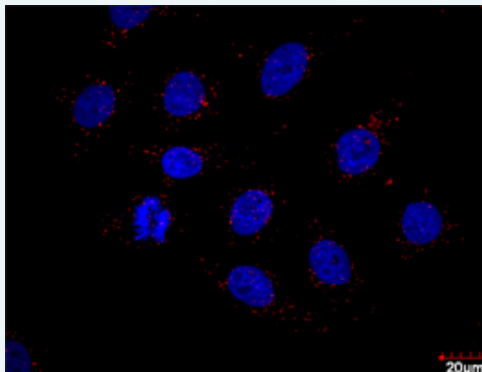
### Specification

**Product Description:** This protein protein interaction antibody pair set comes with two antibodies to detect the protein-protein interaction, one against the PDGFRB protein, and the other against the FLT1 protein for use in *in situ* Proximity Ligation Assay. See Publication Reference below.



**Reactivity:** Human

**Quality Control Testing:** Protein protein interaction immunofluorescence result.



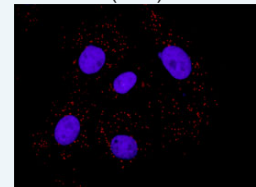
Representative image of Proximity Ligation Analysis of protein-protein interactions between PDGFRB and FLT1. HeLa cells were stained with anti-PDGFRB rabbit purified polyclonal antibody 1:100 and anti-FLT1 mouse monoclonal antibody 1:50. Each red dot represents the detection of protein-protein interaction complex. The images were analyzed using an optimized freeware ([BlobFinder](#)) download from The Centre for Image Analysis at Uppsala University.

**Supplied Product:** Antibody pair set content:  
 1. PDGFRB rabbit purified polyclonal antibody (20 ug)  
 2. FLT1 mouse monoclonal antibody (40 ug)  
 \*Reagents are sufficient for at least 30-50 assays using recommended protocols.

**Storage Instruction:** Store reagents of the antibody pair set at -20°C or lower. Please aliquot to avoid repeated freeze thaw cycle. Reagents should be returned to -

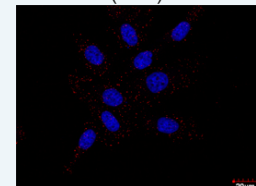
### Application Image

*In situ* Proximity Ligation Assay (Cell)



[enlarge](#)

*In situ* Proximity Ligation Assay (Cell)



[enlarge](#)

20°C storage immediately after use.

MSDS:

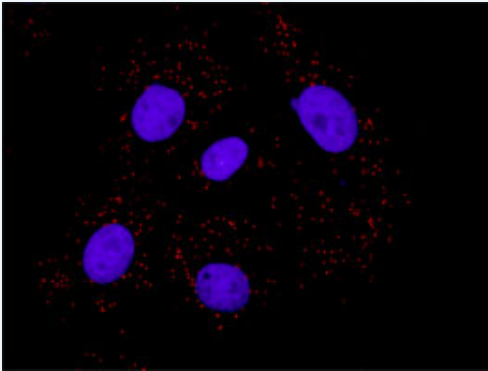
 [Download](#)

## Publication Reference

1. [An analysis of protein-protein interactions in cross-talk pathways reveals CRKL as a novel prognostic marker in hepatocellular carcinoma.](#)  
Liu CH, Chen TC, Chau GY, Jan YH, Chen CH, Hsu CN, Lin KT, Juang YL, Lu PJ, Cheng HC, Chen MH, Chang CF, Ting YS, Kao CY, Hsiao M, Huang CY. Mol Cell Proteomics. 2013 Feb 8. [Epub ahead of print]

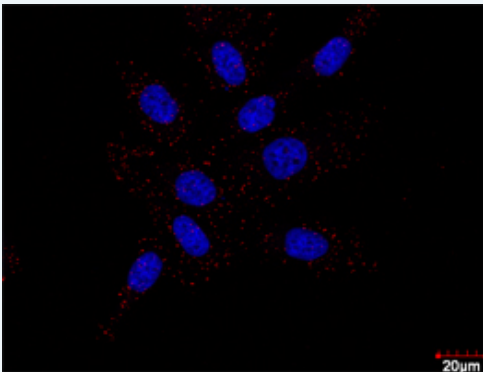
## Applications

### *In situ* Proximity Ligation Assay (Cell)



Representative image of Proximity Ligation Assay of protein-protein interactions between PDGFRB and FLT1. PC-3 cells were stained with anti-PDGFRB rabbit purified polyclonal antibody 1:100 and anti-FLT1 mouse monoclonal antibody 1:50. Each red dot represents the detection of protein-protein interaction complex, and nuclei were counterstained with DAPI (blue).

### *In situ* Proximity Ligation Assay (Cell)



Confocal microscopy image of Proximity Ligation Assay of protein-protein interactions between PDGFRB and FLT1. PC-3 cells were stained with anti-PDGFRB rabbit purified polyclonal antibody 1:100 and anti-FLT1 mouse monoclonal antibody 1:50. Each red dot represents the detection of protein-protein interaction complex, and nuclei were counterstained with DAPI (blue).

[FLT1](#) [PDGFRB](#)

## Gene Information

Entrez GeneID: [5159](#)

Gene Name: PDGFRB

Gene Alias: CD140B,JTK12,PDGF-R-beta,PDGFR,PDGFR1

Gene Description: platelet-derived growth factor receptor, beta polypeptide

Omim ID: [131440](#), [173410](#)

**Gene Ontology:** [Hyperlink](#)

**Gene Summary:** This gene encodes a cell surface tyrosine kinase receptor for members of the platelet-derived growth factor family. These growth factors are mitogens for cells of mesenchymal origin. The identity of the growth factor bound to a receptor monomer determines whether the functional receptor is a homodimer or a heterodimer, composed of both platelet-derived growth factor receptor alpha and beta polypeptides. This gene is flanked on chromosome 5 by the genes for granulocyte-macrophage colony-stimulating factor and macrophage-colony stimulating factor receptor; all three genes may be implicated in the 5-q syndrome. A translocation between chromosomes 5 and 12, that fuses this gene to that of the translocation, ETV6, leukemia gene, results in chronic myeloproliferative disorder with eosinophilia. [provided by RefSeq]

**Other Designations:** beta platelet-derived growth factor receptor,platelet-derived growth factor receptor beta,soluble PDGFRb variant 1

### Gene Information

**Entrez GeneID:** [2321](#)

**Gene Name:** FLT1

**Gene Alias:** FLT,VEGFR1

**Gene Description:** fms-related tyrosine kinase 1 (vascular endothelial growth factor/vascular permeability factor receptor)

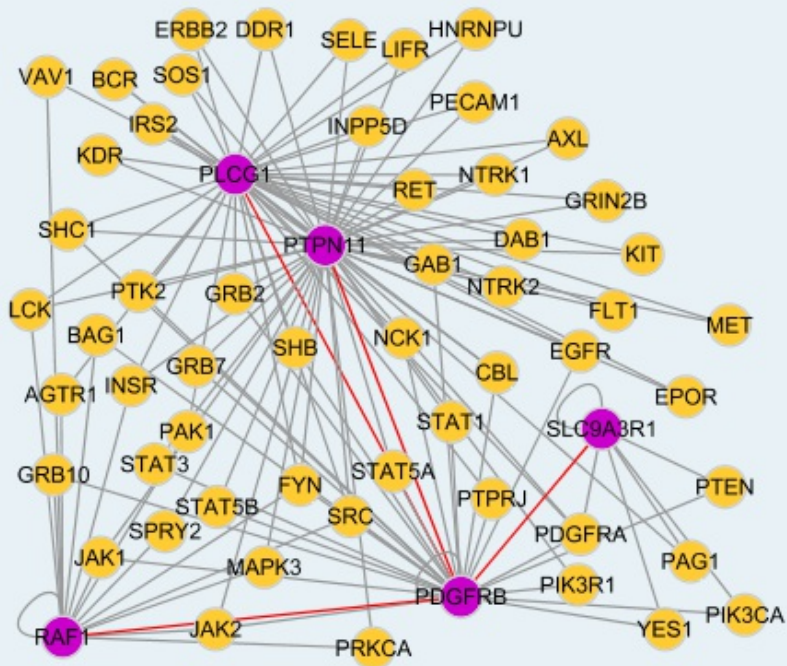
**Omim ID:** [165070](#)

**Gene Ontology:** [Hyperlink](#)

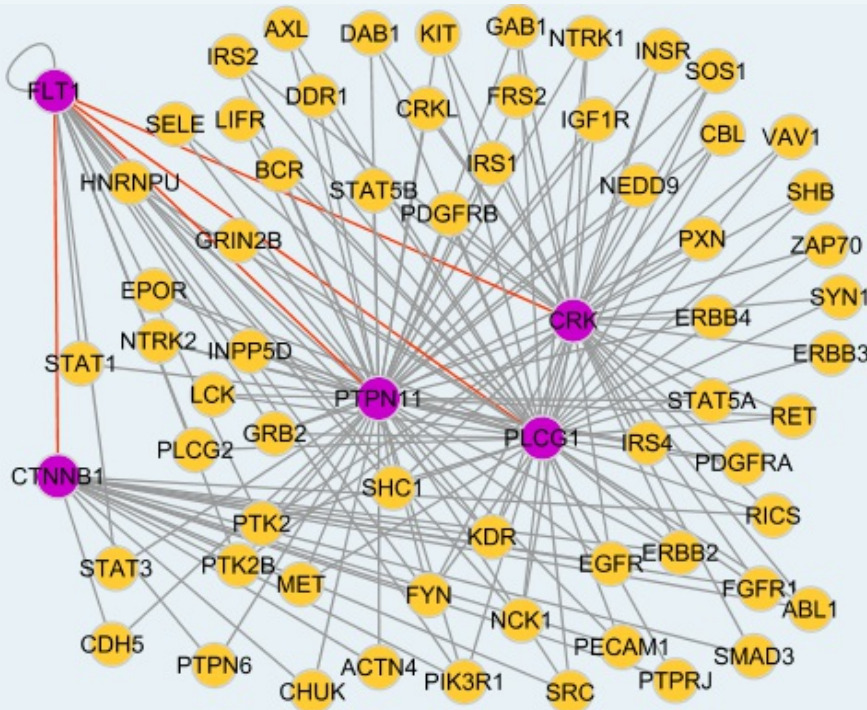
**Gene Summary:** This gene encodes a member of the vascular endothelial growth factor receptor (VEGFR) family. VEGFR family members are receptor tyrosine kinases (RTKs) which contain an extracellular ligand-binding region with seven immunoglobulin (Ig)-like domains, a transmembrane segment, and a tyrosine kinase (TK) domain within the cytoplasmic domain. This protein binds to VEGFR-A, VEGFR-B and placental growth factor and plays an important role in angiogenesis and vasculogenesis. Expression of this receptor is found in vascular endothelial cells, placental trophoblast cells and peripheral blood monocytes. Multiple transcript variants encoding different isoforms have been found for this gene. Isoforms include a full-length transmembrane receptor isoform and shortened, soluble isoforms. The soluble isoforms are associated with the onset of pre-eclampsia

**Other Designations:** fms-related tyrosine kinase 1,soluble VEGF receptor 1-14,soluble VEGFR1 variant 2,soluble VEGFR1 variant 21,vascular endothelial growth factor/vascular permeability factor receptor

### Interactome 1



### Interactome 2



[服務條款](#) | [隱私權政策](#) | [著作及商標](#) | [網站地圖](#)

©2016 亞諾法生技股份有限公司 Abnova Corporation. 版權所有.