



# SZABO SCANDIC

Part of Europa Biosite

## Produktinformation



Forschungsprodukte & Biochemikalien



Zellkultur & Verbrauchsmaterial



Diagnostik & molekulare Diagnostik



Laborgeräte & Service

Weitere Information auf den folgenden Seiten!  
See the following pages for more information!



### Lieferung & Zahlungsart

siehe unsere [Liefer- und Versandbedingungen](#)

### Zuschläge

- Mindermengenzuschlag
- Trockeneiszuschlag
- Gefahrgutzuschlag
- Expressversand

### SZABO-SCANDIC HandelsgmbH

Quellenstraße 110, A-1100 Wien

T. +43(0)1 489 3961-0

F. +43(0)1 489 3961-7

[mail@szabo-scandic.com](mailto:mail@szabo-scandic.com)

[www.szabo-scandic.com](http://www.szabo-scandic.com)

[linkedin.com/company/szaboscandic](https://www.linkedin.com/company/szaboscandic) 

## RAF1(phospho S339) & RAF1 Protein Phosphorylation Antibody Pair

Catalog # : DP0019

規格 : [ 1 Set ]

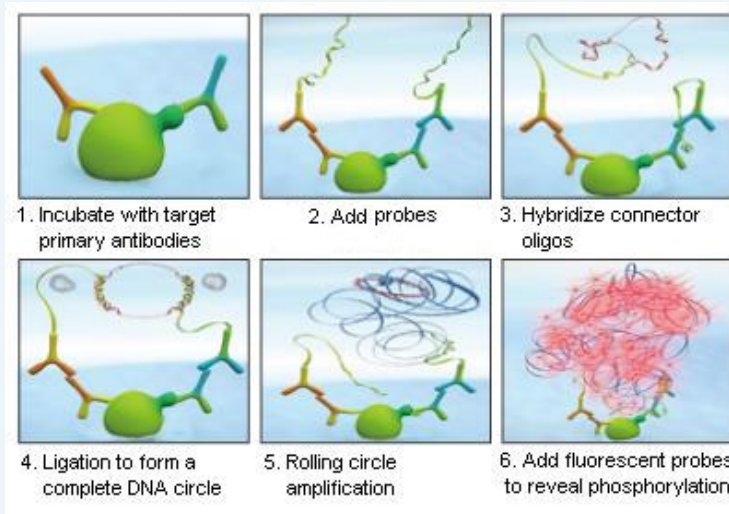
List All

### Specification

**Product Description:** This protein phosphorylation antibody pair set comes with two antibodies, one against the RAF1 protein, and the other against the specific S339 phosphorylated site of RAF1 for use in *in situ* Proximity Ligation Assay. See Publication Reference below.

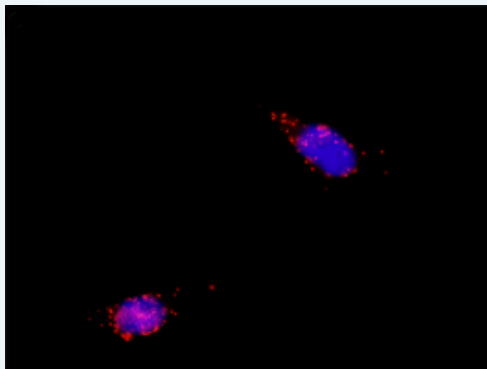
### Application Image

*In situ* Proximity Ligation Assay (Cell)



**Reactivity:** Human

**Quality Control Testing:** Dual recognition immunofluorescence result.



Representative image of Proximity Ligation Assay of protein phosphorylation. HeLa cells were stained with dual recognition antibody pair set, rabbit polyclonal antibody 1:1200 and mouse monoclonal antibody 1:50. Each red dot represents one single phosphorylated protein. The images were analyzed using an optimized freeware ([BlobFinder](#)) download from The Centre for Image Analysis at Uppsala University.

**Supplied Product:** Antibody pair set content:  
 1. Phospho-RAF1 S339 rabbit polyclonal antibody (20 ul)  
 In PBS (0.09% (w/v) sodium azide)  
 2. RAF1 mouse monoclonal antibody (40 ug)  
 In 1x PBS, pH 7.2  
 \*Reagents are sufficient for at least 30-50 assays using recommended protocols.

**Storage** Store reagents of the antibody pair set at -20°C or lower. Please aliquot  
**Instruction:** to avoid repeated freeze thaw cycle. Reagents should be returned to -20°C storage immediately after use.

---

### Publication Reference

---

1. In situ detection of phosphorylated platelet-derived growth factor receptor beta using a generalized proximity ligation method.  
Jarvius M, Paulsson J, Weibrecht I, Leuchowius KJ, Andersson AC, Wahlby C, Gullberg M, Botling J, Sjoblom T, Markova B, Ostman A, Landegren U, Soderberg O.  
Mol Cell Proteomics. 2007 Sep;6(9):1500-9. Epub 2007 Jun 12.
2. Direct observation of individual endogenous protein complexes in situ by proximity ligation.  
Soderberg O, Gullberg M, Jarvius M, Ridderstrale K, Leuchowius KJ, Jarvius J, Wester K, Hydbring P, Bahram F, Larsson LG, and Landegren U.  
Nat Methods. 2006 Dec;3(12):995-1000. Epub 2006 Oct 29.
3. Cytokine detection by antibody-based proximity ligation.  
Gullberg M, Gustafsdottir SM, Schallmeiner E, Jarvius J, Bjarnegard M, Betsholtz C, Landegren U, and Fredriksson S.  
Proc Natl Acad Sci U S A. 2004 Jun 1;101(22):8420-4. Epub 2004 May 21.
4. Protein detection using proximity-dependent DNA ligation assays.  
Fredriksson S, Gullberg M, Jarvius J, Olsson C, Pietras K, Gustafsdottir SM, Ostman A, and Landegren U.  
Nat Biotechnol. 2002 May;20(5):473-7.
5. Highly specific detection of phosphorylated proteins by Duolink  
Mats Gullberg and Ann-Catrin Andersson  
Nature Methods 6. 2009

---

### Applications

---

#### *In situ* Proximity Ligation Assay (Cell)

---

### Gene Information

---

**Entrez GeneID:** [5894](#)

**Gene Name:** RAF1

**Gene Alias:** CRAF, NS5, Raf-1, c-Raf

**Gene Description:** v-raf-1 murine leukemia viral oncogene homolog 1

**Omim ID:** [164760](#), [611553](#), [611554](#)

**Gene Ontology:** [Hyperlink](#)

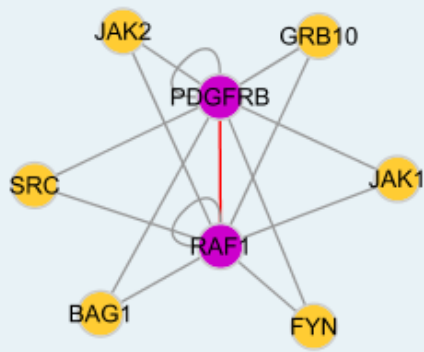
**Gene Summary:** This gene is the cellular homolog of viral raf gene (v-raf). The encoded protein is a MAP kinase kinase kinase (MAP3K), which functions downstream of the Ras family of membrane associated GTPases to which it binds directly. Once activated, the cellular RAF1 protein can phosphorylate to activate the dual specificity protein kinases MEK1 and MEK2, which in turn phosphorylate to activate the serine/threonine specific protein kinases, ERK1 and ERK2. Activated ERKs are pleiotropic effectors of cell physiology and play an important role in the control of gene expression involved in the cell division cycle, apoptosis, cell differentiation and cell migration. Mutations in this gene are associated with Noonan syndrome 5 and LEOPARD syndrome 2.  
[provided by RefSeq]

**Other Designations:** Oncogene RAF1, raf proto-oncogene serine/threonine protein kinase

---

### Interactome

---



### Gene Pathway

[Acute myeloid leukemia B cell receptor signaling pathway](#)
[Bladder cancer Chemokine signaling pathway](#)
[Chronic myeloid leukemia Colorectal cancer](#)
[Endometrial cancer ErbB signaling pathway](#)
[Fc epsilon RI signaling pathway](#)
[Fc gamma R-mediated phagocytosis](#)
[Focal adhesion Gap junction](#)
[Glioma GnRH signaling pathway](#)
[Insulin signaling pathway](#)
[Long-term depression](#)
[Long-term potentiation](#)
[MAPK signaling pathway](#)
[Melanogenesis](#)
[Melanoma](#)
[Natural killer cell mediated cytotoxicity](#)
[Neurotrophin signaling pathway](#)
[Non-small cell lung cancer](#)
[Pancreatic cancer](#)
[Pathways in cancer](#)
[Prostate cancer](#)
[Regulation of actin cytoskeleton](#)
[Renal cell carcinoma](#)
[T cell receptor signaling pathway](#)
[Vascular smooth muscle contraction](#)
[VEGF signaling pathway](#)

### Related Disease

[Abnormalities, Multiple Arrhythmias, Cardiac Articulation Disorders](#)
[Cardiovascular Diseases](#)
[Cognition](#)
[Cognition Disorders](#)
[Developmental Disabilities](#)
[Diabetes Mellitus, Type 2](#)
[Dyslexia, Acquired](#)
[Edema](#)
[Genetic Predisposition to Disease](#)
[Glioma](#)
[Hearing Heart Defects, Congenital](#)
[Hypertrophy, Left Ventricular](#)
[Language Disorders](#)
[LEOPARD Syndrome](#)
[Memory](#)
[Motor Skills](#)

... see more

[服務條款](#) | [隱私權政策](#) | [著作及商標](#) | [網站地圖](#)

©2016 亞諾法生技股份有限公司 Abnova Corporation. 版權所有.