



SZABO SCANDIC

Part of Europa Biosite

Produktinformation



Forschungsprodukte & Biochemikalien



Zellkultur & Verbrauchsmaterial



Diagnostik & molekulare Diagnostik



Laborgeräte & Service

Weitere Information auf den folgenden Seiten!
See the following pages for more information!



Lieferung & Zahlungsart

siehe unsere [Liefer- und Versandbedingungen](#)

Zuschläge

- Mindermengenzuschlag
- Trockeneiszuschlag
- Gefahrgutzuschlag
- Expressversand

SZABO-SCANDIC HandelsgmbH

Quellenstraße 110, A-1100 Wien

T. +43(0)1 489 3961-0

F. +43(0)1 489 3961-7

mail@szabo-scandic.com

www.szabo-scandic.com

[linkedin.com/company/szaboscandic](https://www.linkedin.com/company/szaboscandic) 

PDGFRA(phospho Y988) & PDGFRA Protein Phosphorylation Antibody Pair

Catalog # : DP0031

規格 : [1 Set]

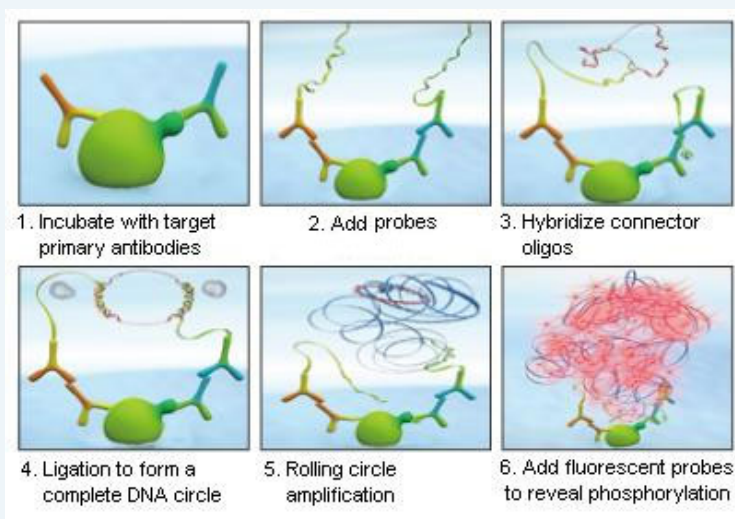
List All

Specification

Product Description: This protein phosphorylation antibody pair set comes with two antibodies, one against the PDGFRA protein, and the other against the specific Y988 phosphorylated site of PDGFRA for use in *in situ* Proximity Ligation Assay. See Publication Reference below.

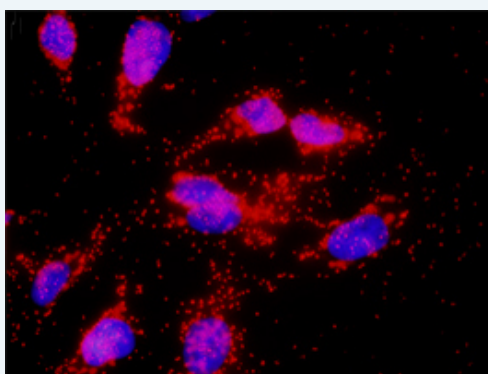
Application Image

In situ Proximity Ligation Assay (Cell)



Reactivity: Human

Quality Control Testing: Dual recognition immunofluorescence result.



Representative image of Proximity Ligation Assay of protein phosphorylation. HeLa cells were stained with dual recognition antibody pair set, rabbit polyclonal antibody 1:1200 and mouse monoclonal antibody 1:50. Each red dot represents one single phosphorylated protein. The images were analyzed using an optimized freeware ([BlobFinder](#)) download from The Centre for Image Analysis at Uppsala University.

Supplied Product: Antibody pair set content:
 1. Phospho-PDGFR α Y988 rabbit polyclonal antibody (20 μ l)
 In PBS (0.09% (w/v) sodium azide)
 2. PDGFRA mouse monoclonal antibody (40 μ g)
 In 1x PBS, pH 7.2
 *Reagents are sufficient for at least 30-50 assays using recommended protocols.

Storage Store reagents of the antibody pair set at -20°C or lower. Please aliquot
Instruction: to avoid repeated freeze thaw cycle. Reagents should be returned to -20°C storage immediately after use.

Publication Reference

1. [In situ detection of phosphorylated platelet-derived growth factor receptor beta using a generalized proximity ligation method.](#)
Jarvius M, Paulsson J, Weibrecht I, Leuchowius KJ, Andersson AC, Wahlby C, Gullberg M, Botling J, Sjoblom T, Markova B, Ostman A, Landegren U, Soderberg O.
Mol Cell Proteomics. 2007 Sep;6(9):1500-9. Epub 2007 Jun 12.
2. [Direct observation of individual endogenous protein complexes in situ by proximity ligation.](#)
Soderberg O, Gullberg M, Jarvius M, Ridderstrale K, Leuchowius KJ, Jarvius J, Wester K, Hydbring P, Bahram F, Larsson LG, and Landegren U.
Nat Methods. 2006 Dec;3(12):995-1000. Epub 2006 Oct 29.
3. [Cytokine detection by antibody-based proximity ligation.](#)
Gullberg M, Gustafsdottir SM, Schallmeiner E, Jarvius J, Bjarnegard M, Betsholtz C, Landegren U, and Fredriksson S.
Proc Natl Acad Sci U S A. 2004 Jun 1;101(22):8420-4. Epub 2004 May 21.
4. [Protein detection using proximity-dependent DNA ligation assays.](#)
Fredriksson S, Gullberg M, Jarvius J, Olsson C, Pietras K, Gustafsdottir SM, Ostman A, and Landegren U.
Nat Biotechnol. 2002 May;20(5):473-7.
5. [Highly specific detection of phosphorylated proteins by Duolink](#)
Mats Gullberg and Ann-Catrin Andersson
Nature Methods 6. 2009

Applications

In situ Proximity Ligation Assay (Cell)

Gene Information

Entrez GeneID: [5156](#)

Gene Name: PDGFRA

Gene Alias: CD140A,MGC74795,PDGFR2,Rhe-PDGFRA

Gene Description: platelet-derived growth factor receptor, alpha polypeptide

Omim ID: [173490](#), [606764](#), [607685](#)

Gene Ontology: [Hyperlink](#)

Gene Summary: This gene encodes a cell surface tyrosine kinase receptor for members of the platelet-derived growth factor family. These growth factors are mitogens for cells of mesenchymal origin. The identity of the growth factor bound to a receptor monomer determines whether the functional receptor is a homodimer or a heterodimer, composed of both platelet-derived growth factor receptor alpha and beta polypeptides. Studies in knockout mice, where homozygosity is lethal, indicate that the alpha form of the platelet-derived growth factor receptor is particularly important for kidney development since mice heterozygous for the receptor exhibit defective kidney phenotypes. [provided by RefSeq]

Other Designations: FIP1L1/PDGFRA fusion protein,platelet-derived growth factor receptor alpha,rearranged-in-hypereosinophilia-platelet derived growth factor receptor alpha fusion protein

Gene Pathway

[Calcium signaling pathway](#) [Colorectal cancer](#) [Cytokine-cytokine receptor interaction](#)
[Endocytosis](#) [Focal adhesion](#) [Gap junction](#) [Glioma](#) [MAPK signaling pathway](#) [Melanoma](#)

[Pathways in cancer](#) [Prostate cancer](#) [Regulation of actin cytoskeleton](#)

Related Disease

[Acute Disease](#) [Adenocarcinoma](#) [Alzheimer Disease](#) [Alzheimer disease](#) [Aneuploidy](#) [Asthma](#)
[Asthma](#) [Brain Neoplasms](#) [Carcinoma](#) [Cardiovascular Diseases](#) [Cleft Lip](#) [Cleft Palate](#)
[Coronary Artery Disease](#) [Coronary Disease](#) [Diabetes Complications](#)
[Diabetes Mellitus, Type 2](#) [Disease Progression](#) [Edema](#) [Esophageal Neoplasms](#)

... see more

[服務條款](#) | [隱私權政策](#) | [著作及商標](#) | [網站地圖](#)

©2016 亞諾法生技股份有限公司 Abnova Corporation. 版權所有.