



SZABO SCANDIC

Part of Europa Biosite

Produktinformation



Forschungsprodukte & Biochemikalien



Zellkultur & Verbrauchsmaterial



Diagnostik & molekulare Diagnostik



Laborgeräte & Service

Weitere Information auf den folgenden Seiten!
See the following pages for more information!



Lieferung & Zahlungsart

siehe unsere [Liefer- und Versandbedingungen](#)

Zuschläge

- Mindermengenzuschlag
- Trockeneiszuschlag
- Gefahrgutzuschlag
- Expressversand

SZABO-SCANDIC HandelsgmbH

Quellenstraße 110, A-1100 Wien

T. +43(0)1 489 3961-0

F. +43(0)1 489 3961-7

mail@szabo-scandic.com

www.szabo-scandic.com

[linkedin.com/company/szaboscandic](https://www.linkedin.com/company/szaboscandic) 

CASP9(phospho S196) & CASP9 Protein Phosphorylation Antibody Pair

Catalog # : DP0060

規格 : [1 Set]

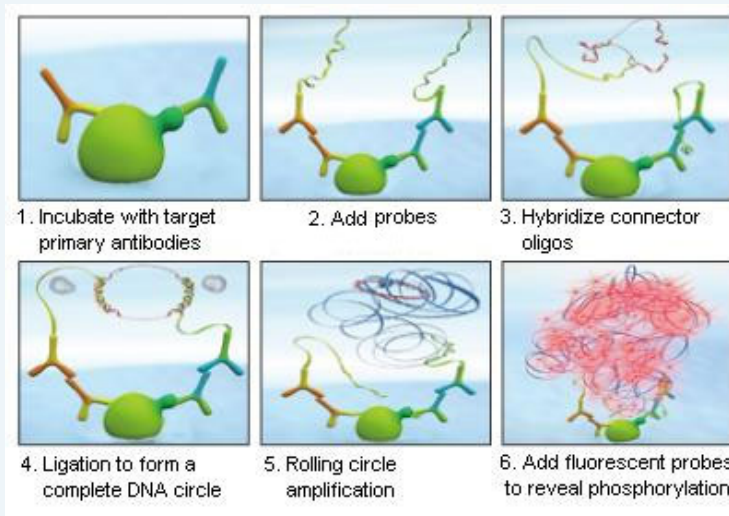
List All

Specification

Product Description: This protein phosphorylation antibody pair set comes with two antibodies, one against the CASP9 protein, and the other against the specific S196 phosphorylated site of CASP9 for use in *in situ* Proximity Ligation Assay. See Publication Reference below.

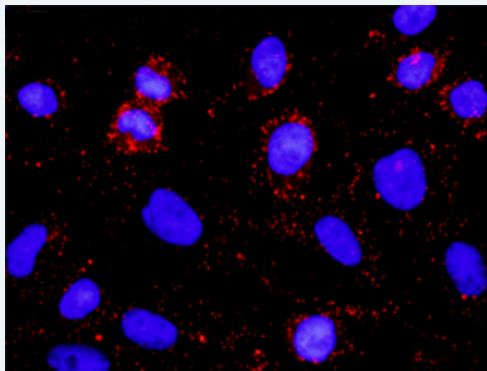
Application Image

In situ Proximity Ligation Assay (Cell)



Reactivity: Human

Quality Control Testing: Dual recognition immunofluorescence result.



Representative image of Proximity Ligation Assay of protein phosphorylation. HeLa cells were stained with dual recognition antibody pair set, rabbit polyclonal antibody 1:1200 and mouse monoclonal antibody 1:50. Each red dot represents one single phosphorylated protein. The images were analyzed using an optimized freeware ([BlobFinder](#)) download from The Centre for Image Analysis at Uppsala University.

Supplied Product: Antibody pair set content:
 1. Phospho-CASP9 S196 rabbit polyclonal antibody (20 ul)
 With 0.09% sodium azide.
 2. CASP9 mouse monoclonal antibody (40 ug)
 In 1x PBS, pH 7.2
 *Reagents are sufficient for at least 30-50 assays using recommended protocols.

Storage Store reagents of the antibody pair set at -20°C or lower. Please aliquot
Instruction: to avoid repeated freeze thaw cycle. Reagents should be returned to -20°C storage immediately after use.

Publication Reference

1. [In situ detection of phosphorylated platelet-derived growth factor receptor beta using a generalized proximity ligation method.](#)
Jarvius M, Paulsson J, Weibrecht I, Leuchowius KJ, Andersson AC, Wahlby C, Gullberg M, Botling J, Sjoblom T, Markova B, Ostman A, Landegren U, Soderberg O.
Mol Cell Proteomics. 2007 Sep;6(9):1500-9. Epub 2007 Jun 12.
2. [Direct observation of individual endogenous protein complexes in situ by proximity ligation.](#)
Soderberg O, Gullberg M, Jarvius M, Ridderstrale K, Leuchowius KJ, Jarvius J, Wester K, Hydbring P, Bahram F, Larsson LG, and Landegren U.
Nat Methods. 2006 Dec;3(12):995-1000. Epub 2006 Oct 29.
3. [Cytokine detection by antibody-based proximity ligation.](#)
Gullberg M, Gustafsdottir SM, Schallmeiner E, Jarvius J, Bjarnegard M, Betsholtz C, Landegren U, and Fredriksson S.
Proc Natl Acad Sci U S A. 2004 Jun 1;101(22):8420-4. Epub 2004 May 21.
4. [Protein detection using proximity-dependent DNA ligation assays.](#)
Fredriksson S, Gullberg M, Jarvius J, Olsson C, Pietras K, Gustafsdottir SM, Ostman A, and Landegren U.
Nat Biotechnol. 2002 May;20(5):473-7.
5. [Highly specific detection of phosphorylated proteins by Duolink](#)
Mats Gullberg and Ann-Catrin Andersson
Nature Methods 6. 2009

Applications

In situ Proximity Ligation Assay (Cell)

Gene Information

Entrez GeneID: [842](#)

Gene Name: CASP9

Gene Alias: APAF-3, APAF3, CASPASE-9c, ICE-LAP6, MCH6

Gene Description: caspase 9, apoptosis-related cysteine peptidase

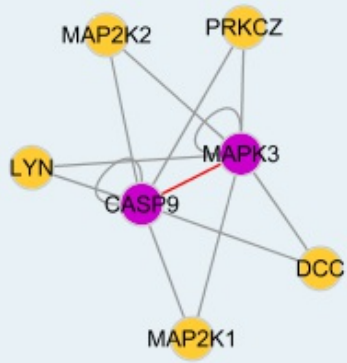
Omim ID: [602234](#)

Gene Ontology: [Hyperlink](#)

Gene Summary: This gene encodes a member of the cysteine-aspartic acid protease (caspase) family. Sequential activation of caspases plays a central role in the execution-phase of cell apoptosis. Caspases exist as inactive proenzymes which undergo proteolytic processing at conserved aspartic residues to produce two subunits, large and small, that dimerize to form the active enzyme. This protein is processed by caspase APAF1; this step is thought to be one of the earliest in the caspase activation cascade. Alternative splicing results in two transcript variants which encode different isoforms. [provided by RefSeq]

Other Designations: ICE-like apoptotic protease
6, OTTHUMP00000002322, OTTHUMP00000002323, OTTHUMP000000044594, apoptotic protease MCH-6, apoptotic protease activating factor 3, caspase 9, caspase 9, apoptosis-related cysteine protease

Interactome



Gene Pathway

[Alzheimer's disease](#) [Amyotrophic lateral sclerosis \(ALS\)](#) [Apoptosis](#) [Colorectal cancer](#)
[Endometrial cancer](#) [Huntington's disease](#) [Non-small cell lung cancer](#) [p53 signaling pathway](#)
[Pancreatic cancer](#) [Parkinson's disease](#) [Pathways in cancer](#) [Prostate cancer](#)
[Small cell lung cancer](#) [VEGF signaling pathway](#)

Related Disease

[Adenocarcinoma](#) [Attention Deficit Disorder with Hyperactivity](#) [Autistic Disorder](#)
[Carcinoma, Large Cell](#) [Carcinoma, Non-Small-Cell Lung](#) [Cardiovascular Diseases](#) [Clubfoot](#)
[Colorectal Neoplasms](#) [Crohn Disease](#) [Crohn's disease](#) [Diabetes Mellitus, Type 2](#)
[Disease Progression](#) [Edema](#) [Esophageal Neoplasms](#) [Gastrointestinal Stromal Tumors](#)
[Genetic Predisposition to Disease](#) [Hematologic Diseases](#) [Hepatitis, Toxic](#) [Hodgkin Disease](#)

... see more

服務條款 | 隱私權政策 | 著作及商標 | 網站地圖

©2016 亞諾法生技股份有限公司 Abnova Corporation. 版權所有.