



SZABO SCANDIC

Part of Europa Biosite

Produktinformation



Forschungsprodukte & Biochemikalien



Zellkultur & Verbrauchsmaterial



Diagnostik & molekulare Diagnostik



Laborgeräte & Service

Weitere Information auf den folgenden Seiten!
See the following pages for more information!



Lieferung & Zahlungsart

siehe unsere [Liefer- und Versandbedingungen](#)

Zuschläge

- Mindermengenzuschlag
- Trockeneiszuschlag
- Gefahrgutzuschlag
- Expressversand

SZABO-SCANDIC HandelsgmbH

Quellenstraße 110, A-1100 Wien

T. +43(0)1 489 3961-0

F. +43(0)1 489 3961-7

mail@szabo-scandic.com

www.szabo-scandic.com

[linkedin.com/company/szaboscandic](https://www.linkedin.com/company/szaboscandic) 

PIK3R1(phospho Y368) & PIK3R1 Protein Phosphorylation Antibody Pair

Catalog # : DP0069

規格 : [1 Set]

List All

Specification

Product Description: This protein phosphorylation antibody pair set comes with two antibodies, one against the PIK3R1 protein, and the other against the specific Y368 phosphorylated site of PIK3R1 for use in *in situ* Proximity Ligation Assay. See Publication Reference below.

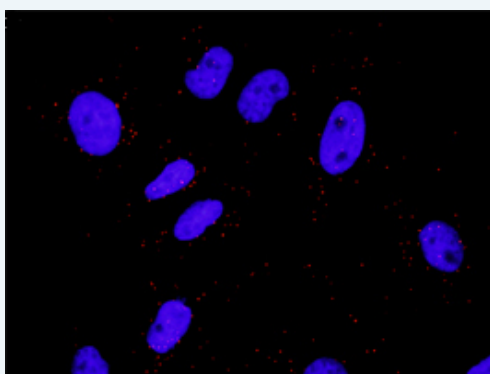
Application Image

In situ Proximity Ligation Assay (Cell)



Reactivity: Human

Quality Control Testing: Dual recognition immunofluorescence result.



Representative image of Proximity Ligation Assay of protein phosphorylation. HeLa cells were stained with dual recognition antibody pair set, rabbit polyclonal antibody 1:1200 and mouse monoclonal antibody 1:50. Each red dot represents one single phosphorylated protein. The images were analyzed using an optimized freeware ([BlobFinder](#)) download from The Centre for Image Analysis at Uppsala University.

Supplied Product: Antibody pair set content:
 1. Phospho-PIK3R1 Y368 rabbit polyclonal antibody (20 ul)
 With 0.09% sodium azide.
 2. PIK3R1 mouse monoclonal antibody (40 ug)
 In 1x PBS, pH 7.2
 *Reagents are sufficient for at least 30-50 assays using recommended protocols.

Storage Store reagents of the antibody pair set at -20°C or lower. Please aliquot
Instruction: to avoid repeated freeze thaw cycle. Reagents should be returned to -20°C storage immediately after use.

Publication Reference

1. In situ detection of phosphorylated platelet-derived growth factor receptor beta using a generalized proximity ligation method.
Jarvius M, Paulsson J, Weibrecht I, Leuchowius KJ, Andersson AC, Wahlby C, Gullberg M, Botling J, Sjoblom T, Markova B, Ostman A, Landegren U, Soderberg O.
Mol Cell Proteomics. 2007 Sep;6(9):1500-9. Epub 2007 Jun 12.
2. Direct observation of individual endogenous protein complexes in situ by proximity ligation.
Soderberg O, Gullberg M, Jarvius M, Ridderstrale K, Leuchowius KJ, Jarvius J, Wester K, Hydbring P, Bahram F, Larsson LG, and Landegren U.
Nat Methods. 2006 Dec;3(12):995-1000. Epub 2006 Oct 29.
3. Cytokine detection by antibody-based proximity ligation.
Gullberg M, Gustafsdottir SM, Schallmeiner E, Jarvius J, Bjarnegard M, Betsholtz C, Landegren U, and Fredriksson S.
Proc Natl Acad Sci U S A. 2004 Jun 1;101(22):8420-4. Epub 2004 May 21.
4. Protein detection using proximity-dependent DNA ligation assays.
Fredriksson S, Gullberg M, Jarvius J, Olsson C, Pietras K, Gustafsdottir SM, Ostman A, and Landegren U.
Nat Biotechnol. 2002 May;20(5):473-7.
5. Highly specific detection of phosphorylated proteins by Duolink
Mats Gullberg and Ann-Catrin Andersson
Nature Methods 6. 2009

Applications

In situ Proximity Ligation Assay (Cell)

Gene Information

Entrez GeneID: [5295](#)

Gene Name: PIK3R1

Gene Alias: GRB1,p85,p85-ALPHA

Gene Description: phosphoinositide-3-kinase, regulatory subunit 1 (alpha)

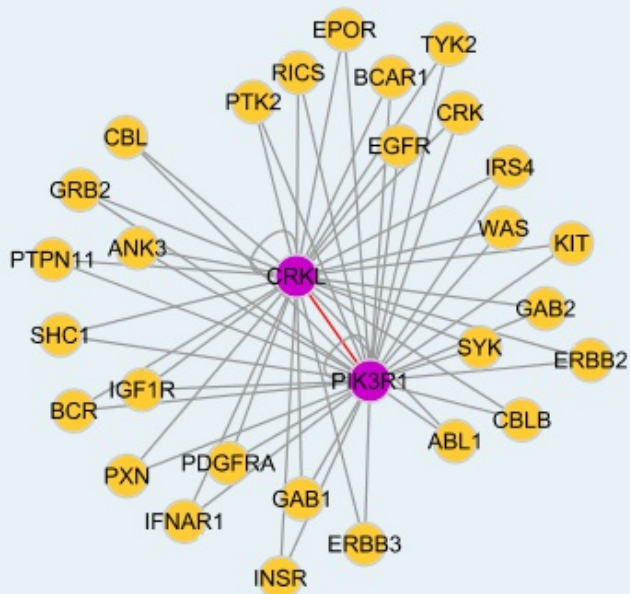
Omim ID: [171833](#)

Gene Ontology: [Hyperlink](#)

Gene Summary: Phosphatidylinositol 3-kinase phosphorylates the inositol ring of phosphatidylinositol at the 3-prime position. The enzyme comprises a 110 kD catalytic subunit and a regulatory subunit of either 85, 55, or 50 kD. This gene encodes the 85 kD regulatory subunit. Phosphatidylinositol 3-kinase plays an important role in the metabolic actions of insulin, and a mutation in this gene has been associated with insulin resistance. Alternative splicing of this gene results in three transcript variants encoding different isoforms. [provided by RefSeq]

Other Designations: phosphatidylinositol 3-kinase, regulatory subunit, polypeptide 1 (p85 alpha), phosphatidylinositol 3-kinase, regulatory, 1, phosphatidylinositol 3-kinase-associated p-85 alpha, phosphoinositide-3-kinase, regulatory subunit 1 (p85 alpha), phosphoinositide-3-ki

Interactome



Gene Pathway

[Acute myeloid leukemia](#)
[Apoptosis](#)
[B cell receptor signaling pathway](#)
[Chemokine signaling pathway](#)
[Chronic myeloid leukemia](#)
[Colorectal cancer](#)
[Endometrial cancer](#)
[ErbB signaling pathway](#)
[Fc epsilon RI signaling pathway](#)
[Fc gamma R-mediated phagocytosis](#)
[Focal adhesion](#)
[Glioma](#)
[Insulin signaling pathway](#)
[Jak-STAT signaling pathway](#)
[Leukocyte transendothelial migration](#)
[Melanoma](#)
[mTOR signaling pathway](#)
[Natural killer cell mediated cytotoxicity](#)
[Neurotrophin signaling pathway](#)
[Non-small cell lung cancer](#)
[Pancreatic cancer](#)
[Pathways in cancer](#)
[Phosphatidylinositol signaling system](#)
[Prostate cancer](#)
[Regulation of actin cytoskeleton](#)
[Renal cell carcinoma](#)
[Small cell lung cancer](#)
[T cell receptor signaling pathway](#)
[Toll-like receptor signaling pathway](#)
[Type II diabetes mellitus](#)
[VEGF signaling pathway](#)

Related Disease

[Alzheimer Disease](#)
[Alzheimer disease](#)
[Body Weight](#)
[Cardiovascular Diseases](#)
[Colon cancer](#)
[Colonic Neoplasms](#)
[Diabetes Mellitus, Type 2](#)
[Drug Toxicity](#)
[Edema](#)
[Genetic Predisposition to Disease](#)
[Glucose Intolerance](#)
[HIV Infections](#)
[Hypercholesterolemia](#)
[Hypertension](#)
[Insulin Resistance](#)
[Kidney Failure, Chronic](#)
[Neoplasms](#)
[Obesity](#)
[Obesity](#)

... see more

[服務條款](#) | [隱私權政策](#) | [著作及商標](#) | [網站地圖](#)

©2016 亞諾法生技股份有限公司 Abnova Corporation. 版權所有.