



# SZABO SCANDIC

Part of Europa Biosite

## Produktinformation



Forschungsprodukte & Biochemikalien



Zellkultur & Verbrauchsmaterial



Diagnostik & molekulare Diagnostik



Laborgeräte & Service

Weitere Information auf den folgenden Seiten!  
See the following pages for more information!



### Lieferung & Zahlungsart

siehe unsere [Liefer- und Versandbedingungen](#)

### Zuschläge

- Mindermengenzuschlag
- Trockeneiszuschlag
- Gefahrgutzuschlag
- Expressversand

### SZABO-SCANDIC HandelsgmbH

Quellenstraße 110, A-1100 Wien

T. +43(0)1 489 3961-0

F. +43(0)1 489 3961-7

[mail@szabo-scandic.com](mailto:mail@szabo-scandic.com)

[www.szabo-scandic.com](http://www.szabo-scandic.com)

[linkedin.com/company/szaboscandic](https://www.linkedin.com/company/szaboscandic) 

## SLAMF1(phospho Y281) & SLAMF1 Protein Phosphorylation Antibody Pair

Catalog # : DP0099

規格 : [ 1 Set ]

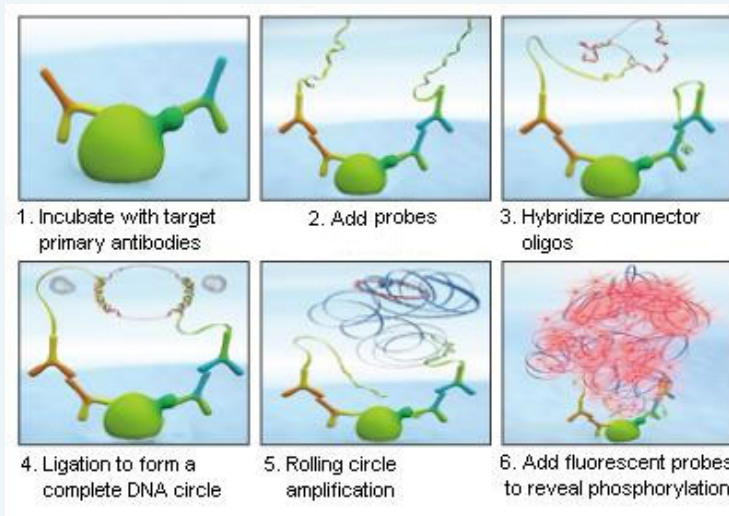
List All

### Specification

**Product Description:** This protein phosphorylation antibody pair set comes with two antibodies, one against the SLAMF1 protein, and the other against the specific Y281 phosphorylated site of SLAMF1 for use in *in situ* Proximity Ligation Assay. See Publication Reference below.

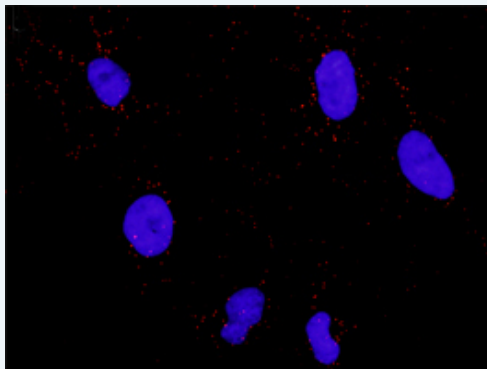
### Application Image

*In situ* Proximity Ligation Assay (Cell)



**Reactivity:** Human

**Quality Control Testing:** Dual recognition immunofluorescence result.



Representative image of Proximity Ligation Assay of protein phosphorylation. HeLa cells were stained with dual recognition antibody pair set, rabbit polyclonal antibody 1:1200 and mouse purified polyclonal antibody 1:50. Each red dot represents one single phosphorylated protein. The images were analyzed using an optimized freeware ([BlobFinder](#)) download from The Centre for Image Analysis at Uppsala University.

**Supplied Product:** Antibody pair set content:  
 1. Phospho-SLAMF1 Y281 rabbit polyclonal antibody (20 ul)  
 In PBS (0.09% (w/v) sodium azide)  
 2. SLAMF1 mouse purified polyclonal antibody (40 ug)  
 In 1x PBS, pH 7.2  
 \*Reagents are sufficient for at least 30-50 assays using recommended protocols.

**Storage** Store reagents of the antibody pair set at -20°C or lower. Please aliquot  
**Instruction:** to avoid repeated freeze thaw cycle. Reagents should be returned to -  
20°C storage immediately after use.

---

### Publication Reference

---

1. In situ detection of phosphorylated platelet-derived growth factor receptor beta using a generalized proximity ligation method.  
Jarvius M, Paulsson J, Weibrecht I, Leuchowius KJ, Andersson AC, Wahlby C, Gullberg M, Botling J, Sjoblom T, Markova B, Ostman A, Landegren U, Soderberg O.  
Mol Cell Proteomics. 2007 Sep;6(9):1500-9. Epub 2007 Jun 12.
2. Direct observation of individual endogenous protein complexes in situ by proximity ligation.  
Soderberg O, Gullberg M, Jarvius M, Ridderstrale K, Leuchowius KJ, Jarvius J, Wester K, Hydbring P, Bahram F, Larsson LG, and Landegren U.  
Nat Methods. 2006 Dec;3(12):995-1000. Epub 2006 Oct 29.
3. Cytokine detection by antibody-based proximity ligation.  
Gullberg M, Gustafsdottir SM, Schallmeiner E, Jarvius J, Bjarnegard M, Betsholtz C, Landegren U, and Fredriksson S.  
Proc Natl Acad Sci U S A. 2004 Jun 1;101(22):8420-4. Epub 2004 May 21.
4. Protein detection using proximity-dependent DNA ligation assays.  
Fredriksson S, Gullberg M, Jarvius J, Olsson C, Pietras K, Gustafsdottir SM, Ostman A, and Landegren U.  
Nat Biotechnol. 2002 May;20(5):473-7.
5. Highly specific detection of phosphorylated proteins by Duolink  
Mats Gullberg and Ann-Catrin Andersson  
Nature Methods 6. 2009

---

### Applications

---

#### *In situ* Proximity Ligation Assay (Cell)

---

---

### Gene Information

---

**Entrez GeneID:** [6504](#)

**Gene Name:** SLAMF1

**Gene Alias:** CD150, CDw150, SLAM

**Gene Description:** signaling lymphocytic activation molecule family member 1

**Omim ID:** [603492](#)

**Gene Ontology:** [Hyperlink](#)

**Other Designations:** OTTHUMP00000025670, OTTHUMP00000060252

---

### Related Disease

---

[Genetic Predisposition to Disease Lung Neoplasms](#)  
[Pulmonary Disease, Chronic Obstructive Tobacco Use Disorder](#)  
[Urinary Bladder Neoplasms Werner syndrome](#)