



# SZABO SCANDIC

Part of Europa Biosite

## Produktinformation



Forschungsprodukte & Biochemikalien



Zellkultur & Verbrauchsmaterial



Diagnostik & molekulare Diagnostik



Laborgeräte & Service

Weitere Information auf den folgenden Seiten!  
See the following pages for more information!



### Lieferung & Zahlungsart

siehe unsere [Liefer- und Versandbedingungen](#)

### Zuschläge

- Mindermengenzuschlag
- Trockeneiszuschlag
- Gefahrgutzuschlag
- Expressversand

### SZABO-SCANDIC HandelsgmbH

Quellenstraße 110, A-1100 Wien

T. +43(0)1 489 3961-0

F. +43(0)1 489 3961-7

[mail@szabo-scandic.com](mailto:mail@szabo-scandic.com)

[www.szabo-scandic.com](http://www.szabo-scandic.com)

[linkedin.com/company/szaboscandic](https://www.linkedin.com/company/szaboscandic) 

## MAPK3(phospho T202/Y204) & MAPK3 Protein Phosphorylation Antibody Pair

Catalog # : DP0113

規格 : [ 1 Set ]

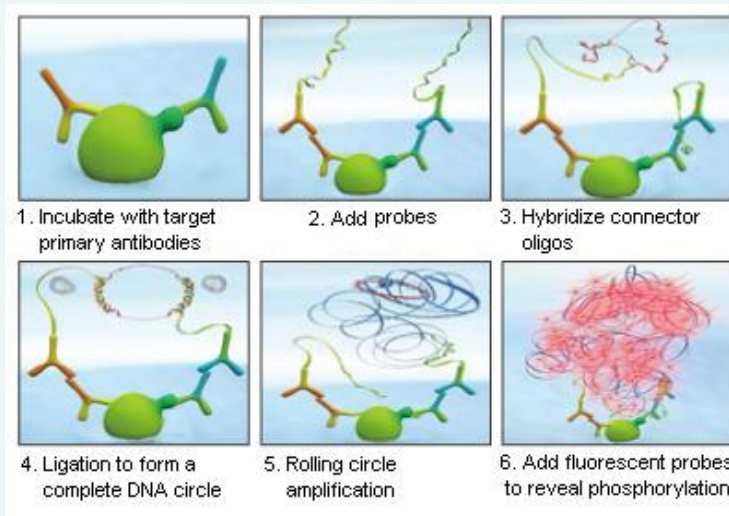
List All

### Specification

**Product Description:** This protein phosphorylation antibody pair set comes with two antibodies, one against the MAPK3 protein, and the other against the specific T202/Y204 phosphorylated site of MAPK3 for use in *in situ* Proximity Ligation Assay. See Publication Reference below.

### Application Image

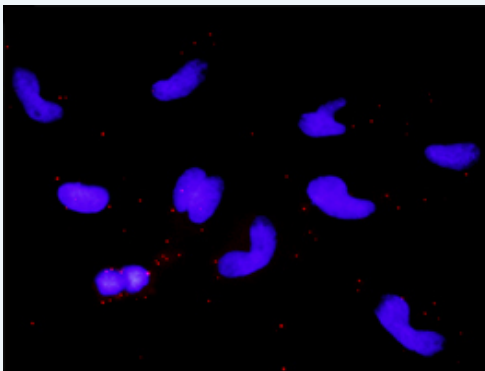
*In situ* Proximity Ligation Assay (Cell)



**Reactivity:** Human

**Quality Control Testing:** Dual recognition immunofluorescence result.

**Testing:**



Representative image of Proximity Ligation Assay of protein phosphorylation. HeLa cells were stained with dual recognition antibody pair set, mouse monoclonal antibody 1:1200 and rabbit purified polyclonal antibody 1:50. Each red dot represents one single phosphorylated protein. The images were analyzed using an optimized freeware ([BlobFinder](#)) download from The Centre for Image Analysis at Uppsala University.

**Supplied Product:** Antibody pair set content:  
1. Phospho-MAPK3 T202/Y204 mouse monoclonal antibody (20 ul)

2. MAPK3 rabbit purified polyclonal antibody (40 ug)  
In 1x PBS, pH 7.2

\*Reagents are sufficient for at least 30-50 assays using recommended protocols.

**Storage** Store reagents of the antibody pair set at -20°C or lower. Please aliquot  
**Instruction:** to avoid repeated freeze thaw cycle. Reagents should be returned to -20°C storage immediately after use.

---

### Publication Reference

---

1. In situ detection of phosphorylated platelet-derived growth factor receptor beta using a generalized proximity ligation method.  
Jarvius M, Paulsson J, Weibrecht I, Leuchowius KJ, Andersson AC, Wahlby C, Gullberg M, Botling J, Sjoblom T, Markova B, Ostman A, Landegren U, Soderberg O.  
Mol Cell Proteomics. 2007 Sep;6(9):1500-9. Epub 2007 Jun 12.
2. Direct observation of individual endogenous protein complexes in situ by proximity ligation.  
Soderberg O, Gullberg M, Jarvius M, Ridderstrale K, Leuchowius KJ, Jarvius J, Wester K, Hydbring P, Bahram F, Larsson LG, and Landegren U.  
Nat Methods. 2006 Dec;3(12):995-1000. Epub 2006 Oct 29.
3. Cytokine detection by antibody-based proximity ligation.  
Gullberg M, Gustafsdottir SM, Schallmeiner E, Jarvius J, Bjarnegard M, Betsholtz C, Landegren U, and Fredriksson S.  
Proc Natl Acad Sci U S A. 2004 Jun 1;101(22):8420-4. Epub 2004 May 21.
4. Protein detection using proximity-dependent DNA ligation assays.  
Fredriksson S, Gullberg M, Jarvius J, Olsson C, Pietras K, Gustafsdottir SM, Ostman A, and Landegren U.  
Nat Biotechnol. 2002 May;20(5):473-7.
5. Highly specific detection of phosphorylated proteins by Duolink  
Mats Gullberg and Ann-Catrin Andersson  
Nature Methods 6. 2009

---

### Applications

---

#### *In situ* Proximity Ligation Assay (Cell)

---

### Gene Information

---

**Entrez GeneID:** [5595](#)

**Gene Name:** MAPK3

**Gene Alias:** ERK1,HS44KDAP,HUMKER1A,MGC20180,P44ERK1,P44MAPK,PRKM3

**Gene Description:** mitogen-activated protein kinase 3

**Omim ID:** [601795](#)

**Gene Ontology:** [Hyperlink](#)

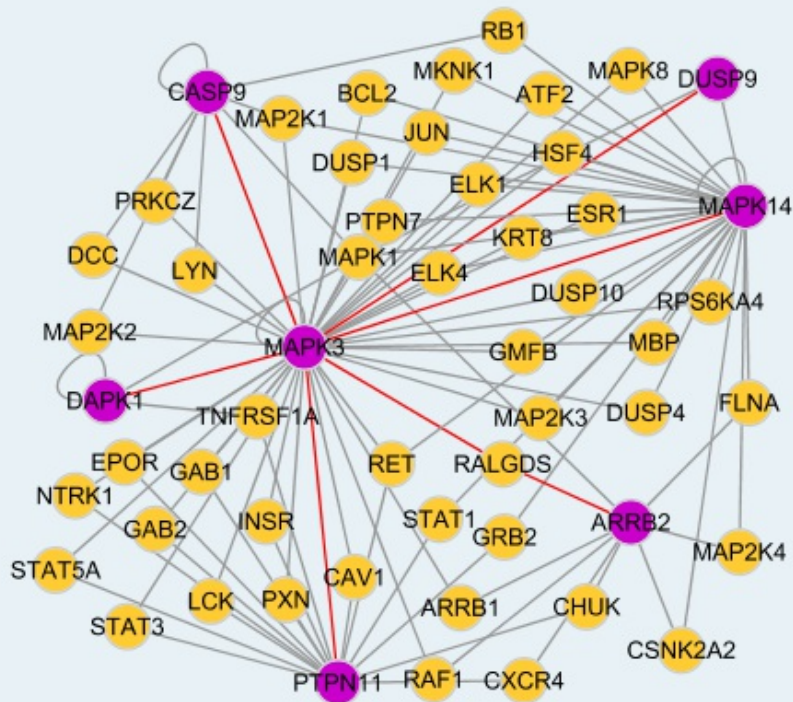
**Gene Summary:** The protein encoded by this gene is a member of the MAP kinase family. MAP kinases, also known as extracellular signal-regulated kinases (ERKs), act in a signaling cascade that regulates various cellular processes such as proliferation, differentiation, and cell cycle progression in response to a variety of extracellular signals. This kinase is activated by upstream kinases, resulting in its translocation to the nucleus where it phosphorylates nuclear targets. Alternatively spliced transcript variants encoding different protein isoforms have been described. [provided by RefSeq]

**Other Designations:** OTTHUMP00000174538,OTTHUMP00000174540,extracellular signal-regulated kinase 1,extracellular signal-related kinase 1

---

### Interactome

---



### Gene Pathway

[Acute myeloid leukemia](#)
[Adherens junction](#)
[Alzheimer's disease](#)
[Axon guidance](#)
[B cell receptor signaling pathway](#)
[Bladder cancer](#)
[Chemokine signaling pathway](#)
[Chronic myeloid leukemia](#)
[Colorectal cancer](#)
[Dorso-ventral axis formation](#)
[Endometrial cancer](#)
[ErbB signaling pathway](#)
[Fc epsilon RI signaling pathway](#)
[Fc gamma R-mediated phagocytosis](#)
[Focal adhesion](#)
[Gap junction](#)
[Glioma](#)
[GnRH signaling pathway](#)
[Insulin signaling pathway](#)
[Long-term depression](#)
[Long-term potentiation](#)
[MAPK signaling pathway](#)
[Melanogenesis](#)
[Melanoma](#)
[mTOR signaling pathway](#)
[Natural killer cell mediated cytotoxicity](#)
[Neurotrophin signaling pathway](#)
[Non-small cell lung cancer](#)
[Pancreatic cancer](#)
[Pathways in cancer](#)
[Prion diseases](#)
[Prostate cancer](#)
[Regulation of actin cytoskeleton](#)
[Renal cell carcinoma](#)
[T cell receptor signaling pathway](#)
[TGF-beta signaling pathway](#)
[Thyroid cancer](#)
[Toll-like receptor signaling pathway](#)
[Type II diabetes mellitus](#)
[Vascular smooth muscle contraction](#)
[VEGF signaling pathway](#)

### Related Disease

[Asthma](#)
[Asthma](#)
[Autistic Disorder](#)
[Disease Models, Animal](#)
[Genetic Predisposition to Disease](#)