



SZABO SCANDIC

Part of Europa Biosite

Produktinformation



Forschungsprodukte & Biochemikalien



Zellkultur & Verbrauchsmaterial



Diagnostik & molekulare Diagnostik



Laborgeräte & Service

Weitere Information auf den folgenden Seiten!
See the following pages for more information!



Lieferung & Zahlungsart

siehe unsere [Liefer- und Versandbedingungen](#)

Zuschläge

- Mindermengenzuschlag
- Trockeneiszuschlag
- Gefahrgutzuschlag
- Expressversand

SZABO-SCANDIC HandelsgmbH

Quellenstraße 110, A-1100 Wien

T. +43(0)1 489 3961-0

F. +43(0)1 489 3961-7

mail@szabo-scandic.com

www.szabo-scandic.com

[linkedin.com/company/szaboscandic](https://www.linkedin.com/company/szaboscandic) 

NFKB1(phospho S907) & NFKB1 Protein Phosphorylation Antibody Pair

Catalog # : DP0136

規格 : [1 Set]

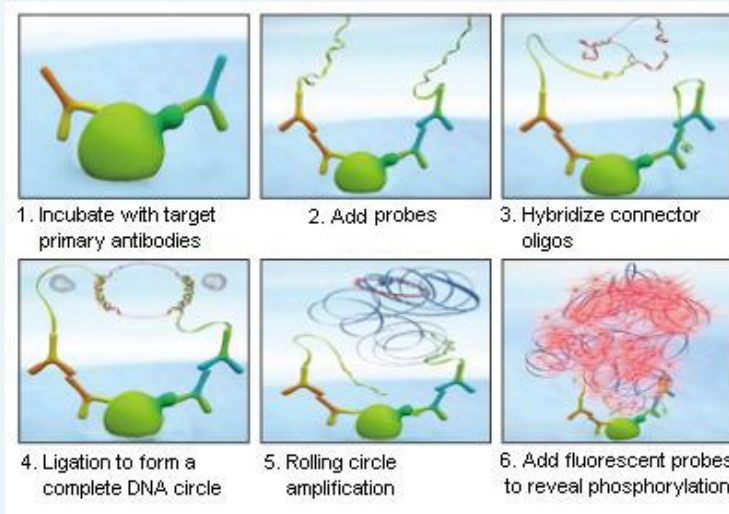
List All

Specification

Product Description: This protein phosphorylation antibody pair set comes with two antibodies, one against the NFKB1 protein, and the other against the specific S907 phosphorylated site of NFKB1 for use in *in situ* Proximity Ligation Assay. See Publication Reference below.

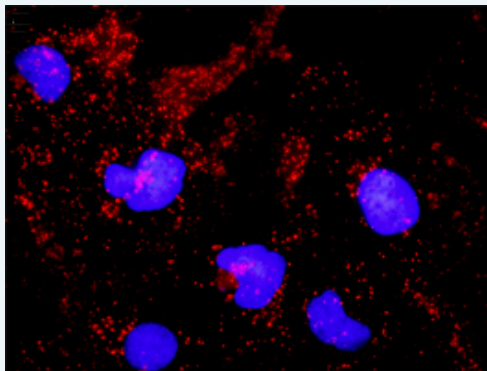
Application Image

In situ Proximity Ligation Assay (Cell)



Reactivity: Human

Quality Control Testing: Dual recognition immunofluorescence result.



Representative image of Proximity Ligation Assay of protein phosphorylation. HeLa cells were stained with dual recognition antibody pair set, rabbit polyclonal antibody 1:1200 and mouse monoclonal antibody 1:50. Each red dot represents one single phosphorylated protein. The images were analyzed using an optimized freeware ([BlobFinder](#)) download from The Centre for Image Analysis at Uppsala University.

Supplied Product: Antibody pair set content:
 1. Phospho-NFKB1 S907 rabbit polyclonal antibody (20 ul)
 In PBS (without Mg²⁺ and Ca²⁺), 150 mM NaCl, pH 7.4 (0.02% sodium azide, 50% glycerol)
 2. NFKB1 mouse monoclonal antibody (40 ug)
 In 1x PBS, pH 7.2
 *Reagents are sufficient for at least 30-50 assays using recommended protocols.

Storage Store reagents of the antibody pair set at -20°C or lower. Please aliquot
Instruction: to avoid repeated freeze thaw cycle. Reagents should be returned to -20°C storage immediately after use.

Publication Reference

1. In situ detection of phosphorylated platelet-derived growth factor receptor beta using a generalized proximity ligation method.
Jarvius M, Paulsson J, Weibrecht I, Leuchowius KJ, Andersson AC, Wahlby C, Gullberg M, Botling J, Sjoblom T, Markova B, Ostman A, Landegren U, Soderberg O.
Mol Cell Proteomics. 2007 Sep;6(9):1500-9. Epub 2007 Jun 12.
2. Direct observation of individual endogenous protein complexes in situ by proximity ligation.
Soderberg O, Gullberg M, Jarvius M, Ridderstrale K, Leuchowius KJ, Jarvius J, Wester K, Hydbring P, Bahram F, Larsson LG, and Landegren U.
Nat Methods. 2006 Dec;3(12):995-1000. Epub 2006 Oct 29.
3. Cytokine detection by antibody-based proximity ligation.
Gullberg M, Gustafsdottir SM, Schallmeiner E, Jarvius J, Bjarnegard M, Betsholtz C, Landegren U, and Fredriksson S.
Proc Natl Acad Sci U S A. 2004 Jun 1;101(22):8420-4. Epub 2004 May 21.
4. Protein detection using proximity-dependent DNA ligation assays.
Fredriksson S, Gullberg M, Jarvius J, Olsson C, Pietras K, Gustafsdottir SM, Ostman A, and Landegren U.
Nat Biotechnol. 2002 May;20(5):473-7.
5. Highly specific detection of phosphorylated proteins by Duolink
Mats Gullberg and Ann-Catrin Andersson
Nature Methods 6. 2009

Applications

In situ Proximity Ligation Assay (Cell)

Gene Information

Entrez GeneID: [4790](#)

Gene Name: NFKB1

Gene Alias: DKFZp686C01211,EBP-1,KBF1,MGC54151,NF-kappa-B,NFKB-p105,NFKB-p50,p105,p50

Gene Description: nuclear factor of kappa light polypeptide gene enhancer in B-cells 1

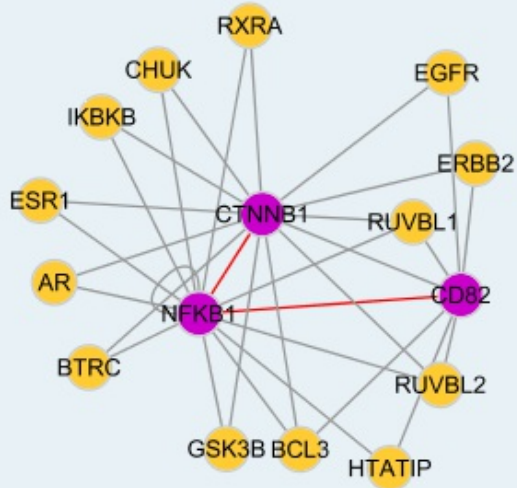
Omim ID: [164011](#)

Gene Ontology: [Hyperlink](#)

Gene Summary: This gene encodes a 105 kD protein which can undergo cotranslational processing by the 26S proteasome to produce a 50 kD protein. The 105 kD protein is a Rel protein-specific transcription inhibitor and the 50 kD protein is a DNA binding subunit of the NF-kappa-B (NFKB) protein complex. NFKB is a transcription regulator that is activated by various intra- and extra-cellular stimuli such as cytokines, oxidant-free radicals, ultraviolet irradiation, and bacterial or viral products. Activated NFKB translocates into the nucleus and stimulates the expression of genes involved in a wide variety of biological functions. Inappropriate activation of NFKB has been associated with a number of inflammatory diseases while persistent inhibition of NFKB leads to inappropriate immune cell development or delayed cell growth. Two transcript variants encoding different isoforms have been found for this gene. [provided by RefSeq]

Other Designations: DNA binding factor KBF1,NF-kappabeta,nuclear factor NF-kappa-B p50 subunit,nuclear factor kappa-B DNA binding subunit,nuclear factor kappa-B, subunit 1

Interactome



Gene Pathway

[Acute myeloid leukemia](#) [Adipocytokine signaling pathway](#) [Apoptosis](#)
[B cell receptor signaling pathway](#) [Chemokine signaling pathway](#) [Chronic myeloid leukemia](#)
[Epithelial cell signaling in Helicobacter pylori infection](#) [MAPK signaling pathway](#)
[Metabolic pathways](#) [Neurotrophin signaling pathway](#) [Pancreatic cancer](#) [Pathways in cancer](#)
[Prostate cancer](#) [Small cell lung cancer](#) [T cell receptor signaling pathway](#)
[Toll-like receptor signaling pathway](#)

Related Disease

[Abortion, Spontaneous](#) [Acute Lung Injury](#) [Adenocarcinoma](#) [Alcoholism](#) [Alzheimer Disease](#)
[Alzheimer disease](#) [Arthritis, Psoriatic](#) [Arthritis, Rheumatoid](#) [Asthma](#) [Atherosclerosis](#)
[Atherosclerosis](#) [Behcet Syndrome](#) [Birth Weight](#) [Breast cancer](#) [Breast Neoplasms](#)
[Calcinosis](#) [Carcinoid Tumor](#) [Carcinoma](#) [Carcinoma, Hepatocellular](#)

... see more

[服務條款](#) | [隱私權政策](#) | [著作及商標](#) | [網站地圖](#)

©2016 亞諾法生技股份有限公司 Abnova Corporation. 版權所有.