



# SZABO SCANDIC

Part of Europa Biosite

## Produktinformation



Forschungsprodukte & Biochemikalien



Zellkultur & Verbrauchsmaterial



Diagnostik & molekulare Diagnostik



Laborgeräte & Service

Weitere Information auf den folgenden Seiten!  
See the following pages for more information!



### Lieferung & Zahlungsart

siehe unsere [Liefer- und Versandbedingungen](#)

### Zuschläge

- Mindermengenzuschlag
- Trockeneiszuschlag
- Gefahrgutzuschlag
- Expressversand

### SZABO-SCANDIC HandelsgmbH

Quellenstraße 110, A-1100 Wien

T. +43(0)1 489 3961-0

F. +43(0)1 489 3961-7

[mail@szabo-scandic.com](mailto:mail@szabo-scandic.com)

[www.szabo-scandic.com](http://www.szabo-scandic.com)

[linkedin.com/company/szaboscandic](https://www.linkedin.com/company/szaboscandic) 

## PTK2B(phospho Y402) & PTK2B Protein Phosphorylation Antibody Pair

Catalog # : DP0206

規格 : [ 1 Set ]

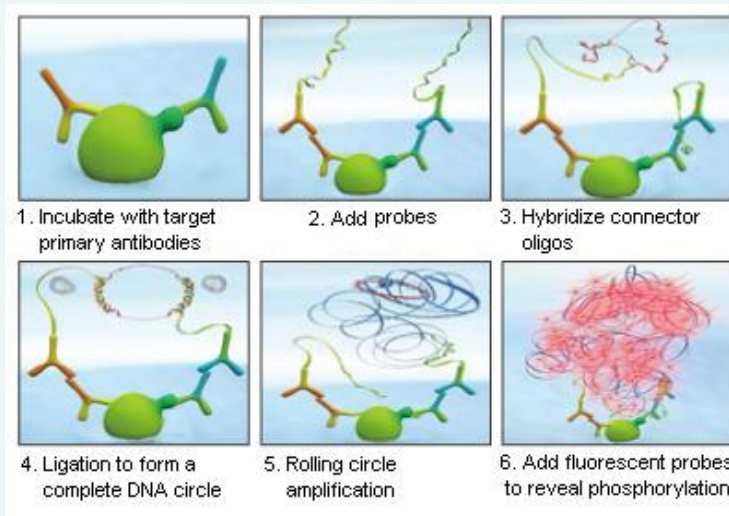
List All

### Specification

**Product Description:** This protein phosphorylation antibody pair set comes with two antibodies, one against the PTK2B protein, and the other against the specific Y402 phosphorylated site of PTK2B for use in *in situ* Proximity Ligation Assay. See Publication Reference below.

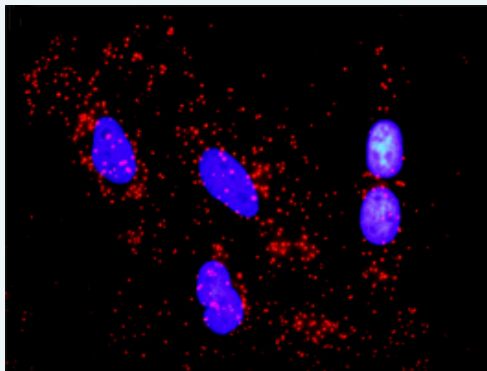
### Application Image

*In situ* Proximity Ligation Assay (Cell)



**Reactivity:** Human

**Quality Control Testing:** Dual recognition immunofluorescence result.



Representative image of Proximity Ligation Assay of protein phosphorylation. HeLa cells were stained with dual recognition antibody pair set, rabbit polyclonal antibody 1:1200 and mouse monoclonal antibody 1:50. Each red dot represents one single phosphorylated protein. The images were analyzed using an optimized freeware ([BlobFinder](#)) download from The Centre for Image Analysis at Uppsala University.

**Supplied Product:** Antibody pair set content:  
 1. Phospho-PTK2B Y402 rabbit polyclonal antibody (20 ul)  
 In PBS, 150 mM NaCl, pH 7.4 (0.02% sodium azide, 50% glycerol)  
 2. PTK2B mouse monoclonal antibody (40 ug)  
 In 1x PBS, pH 7.2  
 \*Reagents are sufficient for at least 30-50 assays using recommended protocols.

**Storage** Store reagents of the antibody pair set at -20°C or lower. Please aliquot  
**Instruction:** to avoid repeated freeze thaw cycle. Reagents should be returned to -20°C storage immediately after use.

---

## Publication Reference

---

1. [In situ detection of phosphorylated platelet-derived growth factor receptor beta using a generalized proximity ligation method.](#)  
Jarvius M, Paulsson J, Weibrecht I, Leuchowius KJ, Andersson AC, Wahlby C, Gullberg M, Botling J, Sjoblom T, Markova B, Ostman A, Landegren U, Soderberg O.  
Mol Cell Proteomics. 2007 Sep;6(9):1500-9. Epub 2007 Jun 12.
2. [Direct observation of individual endogenous protein complexes in situ by proximity ligation.](#)  
Soderberg O, Gullberg M, Jarvius M, Ridderstrale K, Leuchowius KJ, Jarvius J, Wester K, Hydbring P, Bahram F, Larsson LG, and Landegren U.  
Nat Methods. 2006 Dec;3(12):995-1000. Epub 2006 Oct 29.
3. [Cytokine detection by antibody-based proximity ligation.](#)  
Gullberg M, Gustafsdottir SM, Schallmeiner E, Jarvius J, Bjarnegard M, Betsholtz C, Landegren U, and Fredriksson S.  
Proc Natl Acad Sci U S A. 2004 Jun 1;101(22):8420-4. Epub 2004 May 21.
4. [Protein detection using proximity-dependent DNA ligation assays.](#)  
Fredriksson S, Gullberg M, Jarvius J, Olsson C, Pietras K, Gustafsdottir SM, Ostman A, and Landegren U.  
Nat Biotechnol. 2002 May;20(5):473-7.
5. [Highly specific detection of phosphorylated proteins by Duolink](#)  
Mats Gullberg and Ann-Catrin Andersson  
Nature Methods 6. 2009

---

## Applications

---

### *In situ* Proximity Ligation Assay (Cell)

---

---

## Gene Information

---

**Entrez GeneID:** [2185](#)

**Gene Name:** PTK2B

**Gene Alias:** CADTK,CAKB,FADK2,FAK2,FRNK,PKB,PTK,PYK2,RAFTK

**Gene Description:** PTK2B protein tyrosine kinase 2 beta

**Omim ID:** [601212](#)

**Gene Ontology:** [Hyperlink](#)

---

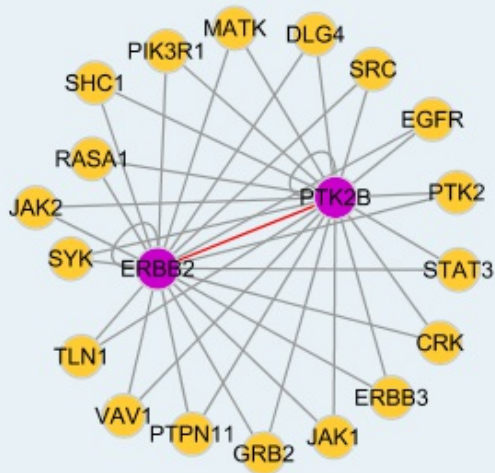
**Gene Summary:** This gene encodes a cytoplasmic protein tyrosine kinase which is involved in calcium-induced regulation of ion channels and activation of the map kinase signaling pathway. The encoded protein may represent an important signaling intermediate between neuropeptide-activated receptors or neurotransmitters that increase calcium flux and the downstream signals that regulate neuronal activity. The encoded protein undergoes rapid tyrosine phosphorylation and activation in response to increases in the intracellular calcium concentration, nicotinic acetylcholine receptor activation, membrane depolarization, or protein kinase C activation. This protein has been shown to bind CRK-associated substrate, nephrocystin, GTPase regulator associated with FAK, and the SH2 domain of GRB2. The encoded protein is a member of the FAK subfamily of protein tyrosine kinases but lacks significant sequence similarity to kinases from other subfamilies. Four transcript variants encoding two different isoforms have been found for this gene. [provided by RefSeq]

---

**Other Designations:** CAK beta,OTTHUMP00000128275,OTTHUMP00000162913,calcium-dependent tyrosine kinase,cell adhesion kinase beta,focal adhesion

kinase 2,proline-rich tyrosine kinase 2,protein kinase B,protein tyrosine kinase 2 beta,related adhesion focal tyrosine kinase

## Interactome



## Gene Pathway

[Calcium signaling pathway](#) [Chemokine signaling pathway](#) [GnRH signaling pathway](#)  
[Leukocyte transendothelial migration](#) [Natural killer cell mediated cytotoxicity](#)

## Related Disease

[Cardiovascular Diseases](#) [Cell Transformation, Neoplastic](#) [Diabetes Mellitus, Type 2](#) [Edema](#)  
[Genetic Predisposition to Disease](#) [HIV Infections](#) [Hypertension](#) [Insulin Resistance](#)  
[Kidney Failure, Chronic](#) [Melanoma](#) [Skin Neoplasms](#) [Tobacco Use Disorder](#)

[服務條款](#) | [隱私權政策](#) | [著作及商標](#) | [網站地圖](#)

©2016 亞諾法生技股份有限公司 Abnova Corporation. 版權所有.