



# SZABO SCANDIC

Part of Europa Biosite

## Produktinformation



Forschungsprodukte & Biochemikalien



Zellkultur & Verbrauchsmaterial



Diagnostik & molekulare Diagnostik



Laborgeräte & Service

Weitere Information auf den folgenden Seiten!  
See the following pages for more information!



### Lieferung & Zahlungsart

siehe unsere [Liefer- und Versandbedingungen](#)

### Zuschläge

- Mindermengenzuschlag
- Trockeneiszuschlag
- Gefahrgutzuschlag
- Expressversand

### SZABO-SCANDIC Handels GmbH

Quellenstraße 110, A-1100 Wien

T. +43(0)1 489 3961-0

F. +43(0)1 489 3961-7

[mail@szabo-scandic.com](mailto:mail@szabo-scandic.com)

[www.szabo-scandic.com](http://www.szabo-scandic.com)

[linkedin.com/company/szaboscandic](https://www.linkedin.com/company/szaboscandic) 

## SMAD1(phospho S465) & SMAD1 Protein Phosphorylation Antibody Pair

Catalog # : DP0239

規格 : [ 1 Set ]

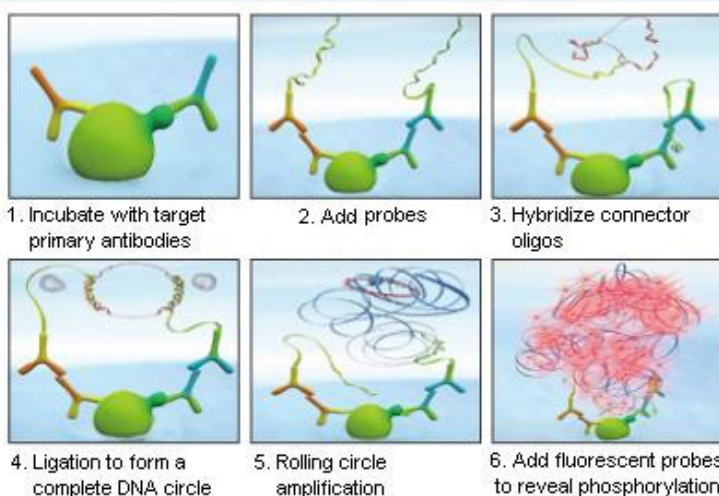
[List All](#)

### Specification

**Product Description:** This protein phosphorylation antibody pair set comes with two antibodies, one against the SMAD1 protein, and the other against the specific S465 phosphorylated site of SMAD1 for use in *in situ* Proximity Ligation Assay. See Publication Reference below.

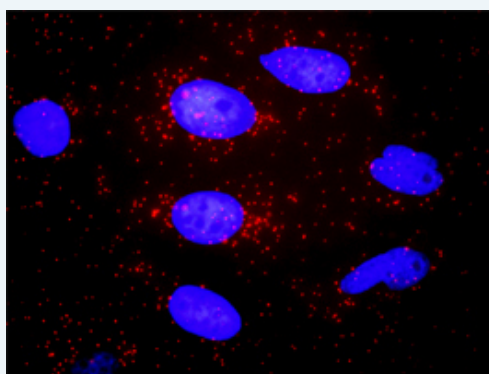
### Application Image

*In situ* Proximity Ligation Assay (Cell)



**Reactivity:** Human

**Quality Control Testing:** Dual recognition immunofluorescence result.



Representative image of Proximity Ligation Assay of protein phosphorylation. HeLa cells were stained with dual recognition antibody pair set, rabbit polyclonal antibody 1:1200 and mouse monoclonal antibody 1:50. Each red dot represents one single phosphorylated protein. The images were analyzed using an optimized freeware (BlobFinder) download from The Centre for Image Analysis at Uppsala University.

**Supplied Product:** Antibody pair set content:  
 1. Phospho-SMAD1 S465 rabbit polyclonal antibody (20 ul)  
 In PBS (without Mg<sup>2+</sup> and Ca<sup>2+</sup>), 150 mM NaCl, pH 7.4 (0.02% sodium azide, 50% glycerol)  
 2. SMAD1 mouse monoclonal antibody (40 ug)  
 In 1x PBS, pH 7.2  
 \*Reagents are sufficient for at least 30-50 assays using recommended protocols.

**Storage Instruction:** Store reagents of the antibody pair set at -20°C or lower. Please aliquot to avoid repeated freeze thaw cycle. Reagents should be returned to -20°C storage immediately after use.

## Publication Reference

1. In situ detection of phosphorylated platelet-derived growth factor receptor beta using a generalized proximity ligation method.  
Jarvius M, Paulsson J, Weibrecht I, Leuchowius KJ, Andersson AC, Wahlby C, Gullberg M, Botling J, Sjoblom T, Markova B, Ostman A, Landegren U, Soderberg O.  
Mol Cell Proteomics. 2007 Sep;6(9):1500-9. Epub 2007 Jun 12.
2. Direct observation of individual endogenous protein complexes in situ by proximity ligation.  
Soderberg O, Gullberg M, Jarvius M, Ridderstrale K, Leuchowius KJ, Jarvius J, Wester K, Hydbring P, Bahram F, Larsson LG, and Landegren U.  
Nat Methods. 2006 Dec;3(12):995-1000. Epub 2006 Oct 29.
3. Cytokine detection by antibody-based proximity ligation.  
Gullberg M, Gustafsdottir SM, Schallmeiner E, Jarvius J, Bjarnegard M, Betsholtz C, Landegren U, and Fredriksson S.  
Proc Natl Acad Sci U S A. 2004 Jun 1;101(22):8420-4. Epub 2004 May 21.
4. Protein detection using proximity-dependent DNA ligation assays.  
Fredriksson S, Gullberg M, Jarvius J, Olsson C, Pietras K, Gustafsdottir SM, Ostman A, and Landegren U.  
Nat Biotechnol. 2002 May;20(5):473-7.
5. Highly specific detection of phosphorylated proteins by Duolink  
Mats Gullberg and Ann-Catrin Andersson  
Nature Methods 6. 2009

## Applications

### *In situ* Proximity Ligation Assay (Cell)

## Gene Information

**Entrez GeneID:** [4086](#)

**Gene Name:** SMAD1

**Gene Alias:** BSP1,JV4-1,JV41,MADH1,MADR1

**Gene Description:** SMAD family member 1

**Omim ID:** [601595](#)

**Gene Ontology:** [Hyperlink](#)

**Gene Summary:** The protein encoded by this gene belongs to the SMAD, a family of proteins similar to the gene products of the Drosophila gene 'mothers against decapentaplegic' (Mad) and the C. elegans gene Sma. SMAD proteins are signal transducers and transcriptional modulators that mediate multiple signaling pathways. This protein mediates the signals of the bone morphogenetic proteins (BMPs), which are involved in a range of biological activities including cell growth, apoptosis, morphogenesis, development and immune responses. In response to BMP ligands, this protein can be phosphorylated and activated by the BMP receptor kinase. The phosphorylated form of this protein forms a complex with SMAD4, which is important for its function in the transcription regulation. This protein is a target for SMAD-specific E3 ubiquitin ligases, such as SMURF1 and SMURF2, and undergoes ubiquitination and proteasome-mediated degradation. Alternatively spliced transcript variants encoding the same protein have been observed. [provided by RefSeq]

**Other Designations:** MAD, mothers against decapentaplegic homolog 1, Mad-related protein 1, SMAD, mothers against DPP homolog 1, Sma- and Mad-related

protein 1, TGF-beta signaling protein 1, mothers against DPP homolog  
1, transforming growth factor-beta signaling protein 1

---

### Gene Pathway

[TGF-beta signaling pathway](#)

---

### Related Disease

[Cleft Lip](#) [Cleft Palate](#) [Diabetes Mellitus, Type 1](#) [Diabetic Nephropathies](#)  
[Genetic Predisposition to Disease](#) [Head and Neck Neoplasms](#) [Hemochromatosis](#)  
[Hypertension](#), [Pulmonary](#) [Kidney Failure](#), [Chronic Neoplasm Recurrence](#), [Local](#)  
[Neoplasms](#), [Second Primary](#) [Obesity](#) [Ovarian Failure](#), [Premature](#)  
[Polycystic Ovary Syndrome](#) [Puberty](#), [Delayed Puberty](#), [Precocious](#) [Thrombophilia](#)  
[Tobacco Use Disorder](#)

---

[服務條款](#) | [隱私權政策](#) | [著作及商標](#) | [網站地圖](#)

©2016 亞諾法生技股份有限公司 Abnova Corporation. 版權所有.