



SZABO SCANDIC

Part of Europa Biosite

Produktinformation



Forschungsprodukte & Biochemikalien



Zellkultur & Verbrauchsmaterial



Diagnostik & molekulare Diagnostik



Laborgeräte & Service

Weitere Information auf den folgenden Seiten!
See the following pages for more information!



Lieferung & Zahlungsart

siehe unsere [Liefer- und Versandbedingungen](#)

Zuschläge

- Mindermengenzuschlag
- Trockeneiszuschlag
- Gefahrgutzuschlag
- Expressversand

SZABO-SCANDIC HandelsgmbH

Quellenstraße 110, A-1100 Wien

T. +43(0)1 489 3961-0

F. +43(0)1 489 3961-7

mail@szabo-scandic.com

www.szabo-scandic.com

[linkedin.com/company/szaboscandic](https://www.linkedin.com/company/szaboscandic) 

CARM1(phospho S228) & CARM1 Protein Phosphorylation Antibody Pair

Catalog # : DP0244

規格 : [1 Set]

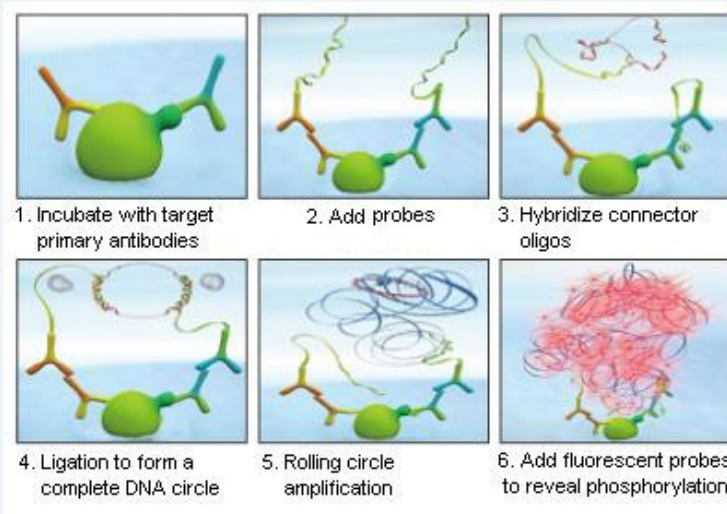
List All

Specification

Product Description: This protein phosphorylation antibody pair set comes with two antibodies, one against the CARM1 protein, and the other against the specific S228 phosphorylated site of CARM1 for use in *in situ* Proximity Ligation Assay. See Publication Reference below.

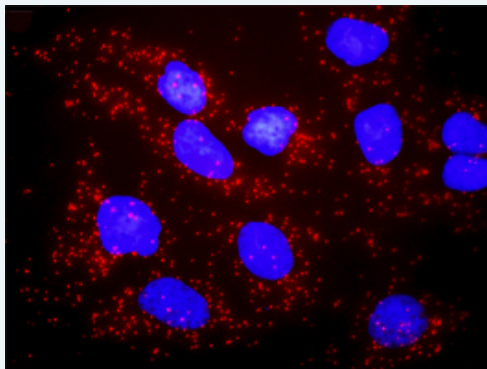
Application Image

In situ Proximity Ligation Assay (Cell)



Reactivity: Human

Quality Control Testing: Dual recognition immunofluorescence result.



Representative image of Proximity Ligation Assay of protein phosphorylation. HeLa cells were stained with dual recognition antibody pair set, rabbit polyclonal antibody 1:1200 and mouse monoclonal antibody 1:50. Each red dot represents one single phosphorylated protein. The images were analyzed using an optimized freeware ([BlobFinder](#)) download from The Centre for Image Analysis at Uppsala University.

Supplied Product: Antibody pair set content:
 1. Phospho-CARM1 S228 rabbit polyclonal antibody (20 ul)
 In PBS (without Mg²⁺ and Ca²⁺), 150 mM NaCl, pH 7.4 (0.02% sodium azide, 50% glycerol)
 2. CARM1 mouse monoclonal antibody (40 ug)
 In 1x PBS, pH 7.2
 *Reagents are sufficient for at least 30-50 assays using recommended protocols.

Storage Instruction: Store reagents of the antibody pair set at -20°C or lower. Please aliquot to avoid repeated freeze thaw cycle. Reagents should be returned to -20°C storage immediately after use.

Publication Reference

1. In situ detection of phosphorylated platelet-derived growth factor receptor beta using a generalized proximity ligation method.
Jarvius M, Paulsson J, Weibrecht I, Leuchowius KJ, Andersson AC, Wahlby C, Gullberg M, Botling J, Sjoblom T, Markova B, Ostman A, Landegren U, Soderberg O.
Mol Cell Proteomics. 2007 Sep;6(9):1500-9. Epub 2007 Jun 12.
2. Direct observation of individual endogenous protein complexes in situ by proximity ligation.
Soderberg O, Gullberg M, Jarvius M, Ridderstrale K, Leuchowius KJ, Jarvius J, Wester K, Hydbring P, Bahram F, Larsson LG, and Landegren U.
Nat Methods. 2006 Dec;3(12):995-1000. Epub 2006 Oct 29.
3. Cytokine detection by antibody-based proximity ligation.
Gullberg M, Gustafsdottir SM, Schallmeiner E, Jarvius J, Bjarnegard M, Betsholtz C, Landegren U, and Fredriksson S.
Proc Natl Acad Sci U S A. 2004 Jun 1;101(22):8420-4. Epub 2004 May 21.
4. Protein detection using proximity-dependent DNA ligation assays.
Fredriksson S, Gullberg M, Jarvius J, Olsson C, Pietras K, Gustafsdottir SM, Ostman A, and Landegren U.
Nat Biotechnol. 2002 May;20(5):473-7.
5. Highly specific detection of phosphorylated proteins by Duolink
Mats Gullberg and Ann-Catrin Andersson
Nature Methods 6. 2009

Applications

In situ Proximity Ligation Assay (Cell)

Gene Information

Entrez GeneID: [10498](#)

Gene Name: CARM1

Gene Alias: PRMT4

Gene Description: coactivator-associated arginine methyltransferase 1

Omim ID: [603934](#)

Gene Ontology: [Hyperlink](#)

Gene Summary: Protein arginine N-methyltransferases, such as CARM1, catalyze the transfer of a methyl group from S-adenosyl-L-methionine to the side chain nitrogens of arginine residues within proteins to form methylated arginine derivatives and S-adenosyl-L-homocysteine. Protein arginine methylation has been implicated in signal transduction, metabolism of nascent pre-RNA, and transcriptional activation (Frankel et al., 2002 [PubMed 11724789]).[supplied by OMIM]

Other Designations: coactivator-associated arginine methyltransferase-1, protein arginine N-methyltransferase 4

Related Disease

Breast cancer [Breast Neoplasms](#) [Genetic Predisposition to Disease](#) [Spinal Dysraphism](#)

