



SZABO SCANDIC

Part of Europa Biosite

Produktinformation



Forschungsprodukte & Biochemikalien



Zellkultur & Verbrauchsmaterial



Diagnostik & molekulare Diagnostik



Laborgeräte & Service

Weitere Information auf den folgenden Seiten!
See the following pages for more information!



Lieferung & Zahlungsart

siehe unsere [Liefer- und Versandbedingungen](#)

Zuschläge

- Mindermengenzuschlag
- Trockeneiszuschlag
- Gefahrgutzuschlag
- Expressversand

SZABO-SCANDIC HandelsgmbH

Quellenstraße 110, A-1100 Wien

T. +43(0)1 489 3961-0

F. +43(0)1 489 3961-7

mail@szabo-scandic.com

www.szabo-scandic.com

[linkedin.com/company/szaboscandic](https://www.linkedin.com/company/szaboscandic) 

A2M (Human) IP-WB Antibody Pair

產品編號 #: H00000002-PW1

規格 : [1 Set]

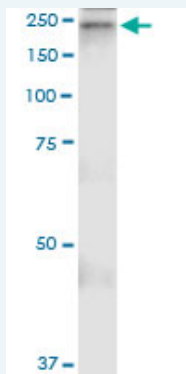
[List All](#)

Specification

Product Description: This IP-WB antibody pair set comes with one antibody for immunoprecipitation and another to detect the precipitated protein in western blot.

Reactivity: Human

Quality Control Testing: Immunoprecipitation-Western Blot (IP-WB)



Immunoprecipitation of A2M transfected lysate using rabbit polyclonal anti-A2M and Protein A Magnetic Bead ([U0007](#)), and immunoblotted with mouse purified polyclonal anti-A2M.

Supplied Product: Antibody pair set content:
 1. Antibody pair for IP: rabbit polyclonal anti-A2M (300 ul)
 2. Antibody pair for WB: mouse purified polyclonal anti-A2M (50 ug)

Storage Instruction: Store reagents of the antibody pair set at -20°C or lower. Please aliquot to avoid repeated freeze thaw cycle. Reagents should be returned to -20°C storage immediately after use.

Applications

Immunoprecipitation-Western Blot

 [Protocol Download](#)

Gene Information

Entrez GeneID: [2](#)

Gene Name: A2M

Gene Alias: CPAMD5, DKFZp779B086, FWP007, S863-7

Gene Description: alpha-2-macroglobulin

Omim ID: [103950](#), [104300](#)

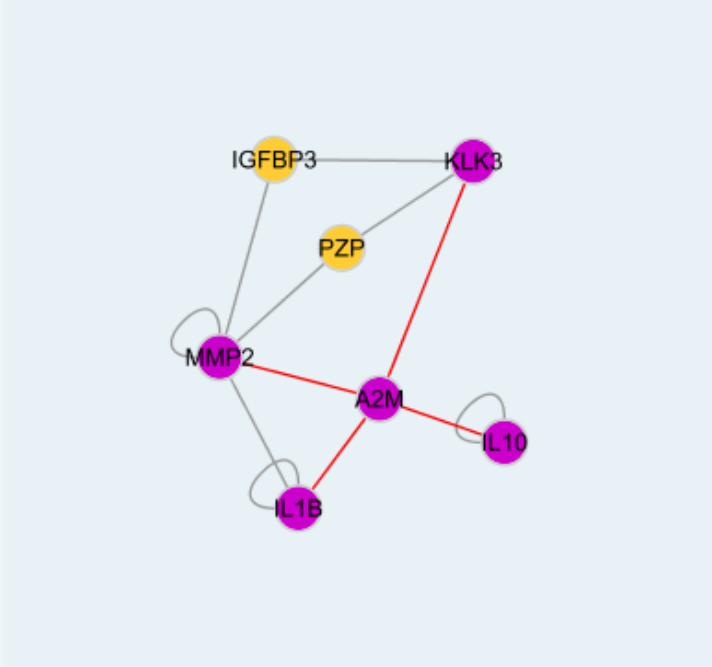
Gene Ontology: [Hyperlink](#)

Gene Summary: Alpha-2-macroglobulin is a protease inhibitor and cytokine transporter.

It inhibits many proteases, including trypsin, thrombin and collagenase. A2M is implicated in Alzheimer disease (AD) due to its ability to mediate the clearance and degradation of A-beta, the major component of beta-amyloid deposits. [provided by RefSeq]

Other Designations: -

Interactome



Gene Pathway

[Complement and coagulation cascades](#)

Related Disease

[Alzheimer Disease](#) [Alzheimer disease](#) [Amyloidosis](#) [Arthritis, Rheumatoid](#) [Cardiovascular Diseases](#) [Cognition Disorders](#) [Dementia](#) [Diabetes Complications](#) [Diabetes Mellitus, Type 2](#) [Disease Progression](#) [Diseases in Twins](#) [Edema](#) [Essential Tremor](#) [Essential tremor](#) [Genetic Predisposition to Disease](#) [Hepatitis C, Chronic](#) [Kidney Failure, Chronic](#) [Liver Cirrhosis](#) [Macular Degeneration](#)

[... see more](#)

[服務條款](#) | [隱私權政策](#) | [著作及商標](#) | [網站地圖](#)

©2016 亞諾法生技股份有限公司 Abnova Corporation. 版權所有.