



SZABO SCANDIC

Part of Europa Biosite

Produktinformation



Forschungsprodukte & Biochemikalien



Zellkultur & Verbrauchsmaterial



Diagnostik & molekulare Diagnostik



Laborgeräte & Service

Weitere Information auf den folgenden Seiten!
See the following pages for more information!



Lieferung & Zahlungsart

siehe unsere [Liefer- und Versandbedingungen](#)

Zuschläge

- Mindermengenzuschlag
- Trockeneiszuschlag
- Gefahrgutzuschlag
- Expressversand

SZABO-SCANDIC HandelsgmbH

Quellenstraße 110, A-1100 Wien

T. +43(0)1 489 3961-0

F. +43(0)1 489 3961-7

mail@szabo-scandic.com

www.szabo-scandic.com

[linkedin.com/company/szaboscandic](https://www.linkedin.com/company/szaboscandic) 

SERPINA3 (Human) Matched Antibody Pair

Catalog # : H00000012-AP11

規格 : [1 Set]

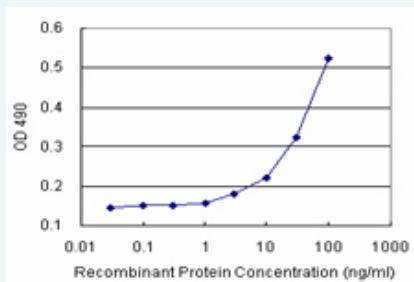
[List All](#)

Specification

Product Description: This antibody pair set comes with matched antibody pair to detect and quantify protein level of human SERPINA3.

Reactivity: Human

Quality Control Testing: Standard curve using recombinant protein (H00000012-P02) as an analyte.



Sandwich ELISA detection sensitivity ranging from 3 ng/ml to 100 ng/ml.

Supplied Product: Antibody pair set content:
 1. Capture antibody: rabbit MaxPab® affinity purified polyclonal anti-SERPINA3 (100 ug)
 2. Detection antibody: mouse monoclonal anti-SERPINA3, IgG2a Kappa (20 ug)
 *Reagents are sufficient for at least 1-2 x 96 well plates using recommended protocols.

Storage Instruction: Store reagents of the antibody pair set at -20°C or lower. Please aliquot to avoid repeated freeze thaw cycle. Reagents should be returned to -20°C storage immediately after use.

MSDS:  [Download](#)

Applications

ELISA Pair (Recombinant protein)

 [Protocol Download](#)

Gene Information

Entrez GeneID: [12](#)

Gene Name: SERPINA3

Gene Alias: AACT,ACT,GIG24,GIG25,MGC88254

Gene Description: serpin peptidase inhibitor, clade A (alpha-1 antiproteinase, antitrypsin), member 3

Omim ID: [107280](#)

Gene Ontology: [Hyperlink](#)

Application Image

ELISA Pair (Recombinant protein)

Gene Summary: The protein encoded by this gene is a plasma protease inhibitor and member of the serine protease inhibitor class. Polymorphisms in this protein appear to be tissue specific and influence protease targeting. Variations in this protein's sequence have been implicated in Alzheimer's disease, and deficiency of this protein has been associated with liver disease. Mutations have been identified in patients with Parkinson disease and chronic obstructive pulmonary disease. [provided by RefSeq]

Other Designations: alpha-1-antichymotrypsin,antichymotrypsin,growth-inhibiting protein 24,growth-inhibiting protein 25,serine (or cysteine) proteinase inhibitor, clade A (alpha-1 antiproteinase, antitrypsin), member 3,serine (or cysteine) proteinase inhibitor, clade A, memb

Related Disease

[Acute Disease](#) [alpha 1-Antitrypsin Deficiency](#) [Alpha-1-antitrypsin deficiency](#)
[Alzheimer Disease](#) [Alzheimer disease](#) [Aneurysm, Ruptured](#) [Asthma](#) [Asthma](#) [Brain Ischemia](#)
[Bronchial Hyperreactivity](#) [Cardiovascular Diseases](#) [Cerebral Amyloid Angiopathy](#)
[Cerebral Hemorrhage](#) [Cerebrovascular Accident](#) [Chronic Disease](#) [Cognition](#)
[Cognition Disorders](#) [Cystic fibrosis](#) [Dementia](#)

... see more

[服務條款](#) | [隱私權政策](#) | [著作及商標](#) | [網站地圖](#)

©2016 亞諾法生技股份有限公司 Abnova Corporation. 版權所有.