



# SZABO SCANDIC

Part of Europa Biosite

## Produktinformation



Forschungsprodukte & Biochemikalien



Zellkultur & Verbrauchsmaterial



Diagnostik & molekulare Diagnostik



Laborgeräte & Service

Weitere Information auf den folgenden Seiten!  
See the following pages for more information!



### Lieferung & Zahlungsart

siehe unsere [Liefer- und Versandbedingungen](#)

### Zuschläge

- Mindermengenzuschlag
- Trockeneiszuschlag
- Gefahrgutzuschlag
- Expressversand

### SZABO-SCANDIC HandelsgmbH

Quellenstraße 110, A-1100 Wien

T. +43(0)1 489 3961-0

F. +43(0)1 489 3961-7

[mail@szabo-scandic.com](mailto:mail@szabo-scandic.com)

[www.szabo-scandic.com](http://www.szabo-scandic.com)

[linkedin.com/company/szaboscandic](https://www.linkedin.com/company/szaboscandic) 

## SERPINA3 (Human) IP-WB Antibody Pair

Catalog # : H00000012-PW1

規格 : [ 1 Set ]

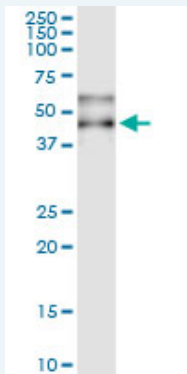
[List All](#)

### Specification

**Product Description:** This IP-WB antibody pair set comes with one antibody for immunoprecipitation and another to detect the precipitated protein in western blot.

**Reactivity:** Human

**Quality Control Testing:** Immunoprecipitation-Western Blot (IP-WB)



Immunoprecipitation of SERPINA3 transfected lysate using rabbit polyclonal anti-SERPINA3 and Protein A Magnetic Bead ([U0007](#)), and immunoblotted with mouse purified polyclonal anti-SERPINA3.

**Supplied Product:** Antibody pair set content:  
 1. Antibody pair for IP: rabbit polyclonal anti-SERPINA3 (300 ul)  
 2. Antibody pair for WB: mouse purified polyclonal anti-SERPINA3 (50 ug)

**Storage Instruction:** Store reagents of the antibody pair set at -20°C or lower. Please aliquot to avoid repeated freeze thaw cycle. Reagents should be returned to -20°C storage immediately after use.

**MSDS:** [Download](#)

### Applications

**Immunoprecipitation-Western Blot**

[Protocol Download](#)

### Gene Information

**Entrez GeneID:** [12](#)

**Gene Name:** SERPINA3

**Gene Alias:** AACT,ACT,GIG24,GIG25,MGC88254

**Gene Description:** serpin peptidase inhibitor, clade A (alpha-1 antiproteinase, antitrypsin), member 3

**Omim ID:** [107280](#)

### Application Image

Immunoprecipitation-Western Blot

**Gene Ontology:** [Hyperlink](#)

**Gene Summary:** The protein encoded by this gene is a plasma protease inhibitor and member of the serine protease inhibitor class. Polymorphisms in this protein appear to be tissue specific and influence protease targeting. Variations in this protein's sequence have been implicated in Alzheimer's disease, and deficiency of this protein has been associated with liver disease. Mutations have been identified in patients with Parkinson disease and chronic obstructive pulmonary disease.  
[provided by RefSeq]

**Other Designations:** alpha-1-antichymotrypsin,antichymotrypsin,growth-inhibiting protein 24,growth-inhibiting protein 25,serine (or cysteine) proteinase inhibitor, clade A (alpha-1 antiproteinase, antitrypsin), member 3,serine (or cysteine) proteinase inhibitor, clade A, memb

### **Related Disease**

[Acute Disease](#) [alpha 1-Antitrypsin Deficiency](#) [Alpha-1-antitrypsin deficiency](#)  
[Alzheimer Disease](#) [Alzheimer disease](#) [Aneurysm, Ruptured](#) [Asthma](#) [Asthma](#) [Brain Ischemia](#)  
[Bronchial Hyperreactivity](#) [Cardiovascular Diseases](#) [Cerebral Amyloid Angiopathy](#)  
[Cerebral Hemorrhage](#) [Cerebrovascular Accident](#) [Chronic Disease](#) [Cognition](#)  
[Cognition Disorders](#) [Cystic fibrosis](#) [Dementia](#)

... see more

[服務條款](#) | [隱私權政策](#) | [著作及商標](#) | [網站地圖](#)

©2016 亞諾法生技股份有限公司 Abnova Corporation. 版權所有.