



SZABO SCANDIC

Part of Europa Biosite

Produktinformation



Forschungsprodukte & Biochemikalien



Zellkultur & Verbrauchsmaterial



Diagnostik & molekulare Diagnostik



Laborgeräte & Service

Weitere Information auf den folgenden Seiten!
See the following pages for more information!



Lieferung & Zahlungsart

siehe unsere [Liefer- und Versandbedingungen](#)

Zuschläge

- Mindermengenzuschlag
- Trockeneiszuschlag
- Gefahrgutzuschlag
- Expressversand

SZABO-SCANDIC HandelsgmbH

Quellenstraße 110, A-1100 Wien

T. +43(0)1 489 3961-0

F. +43(0)1 489 3961-7

mail@szabo-scandic.com

www.szabo-scandic.com

[linkedin.com/company/szaboscandic](https://www.linkedin.com/company/szaboscandic) 

ACAT2 (Human) Matched Antibody Pair

Catalog # : H00000039-AP11

規格 : [1 Set]

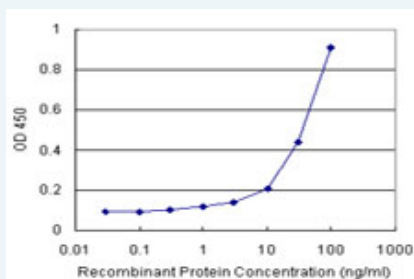
[List All](#)

Specification

Product Description: This antibody pair set comes with matched antibody pair to detect and quantify protein level of human ACAT2.

Reactivity: Human

Quality Control Testing: Standard curve using recombinant protein (H00000039-P01) as an analyte.



Sandwich ELISA detection sensitivity ranging from 3 ng/ml to 100 ng/ml.

Supplied Product: Antibody pair set content:
 1. Capture antibody: rabbit MaxPab® affinity purified polyclonal anti-ACAT2 (100 ug)
 2. Detection antibody: mouse monoclonal anti-ACAT2, IgG2a Kappa (20 ug)
 *Reagents are sufficient for at least 1-2 x 96 well plates using recommended protocols.

Storage Instruction: Store reagents of the antibody pair set at -20°C or lower. Please aliquot to avoid repeated freeze thaw cycle. Reagents should be returned to -20°C storage immediately after use.

MSDS:  [Download](#)

Applications

ELISA Pair (Recombinant protein)

 [Protocol Download](#)

Gene Information

Entrez GeneID: [39](#)

Gene Name: ACAT2

Gene Alias: -

Gene Description: acetyl-Coenzyme A acetyltransferase 2

Omim ID: [100678](#)

Gene Ontology: [Hyperlink](#)

Application Image

ELISA Pair (Recombinant protein)

Gene Summary: The product of this gene is an enzyme involved in lipid metabolism, and it encodes cytosolic acetoacetyl-CoA thiolase. This gene shows complementary overlapping with the 3-prime region of the TCP1 gene in both mouse and human. These genes are encoded on opposite strands of DNA, as well as in opposite transcriptional orientation. [provided by RefSeq]

Other Designations: OTTHUMP00000017527, acetoacetyl Coenzyme A thiolase, cytosolic acetoacetyl-CoA thiolase

Gene Pathway

[Benzoate degradation via CoA ligation](#) [Butanoate metabolism](#) [Fatty acid metabolism](#)
[Lysine degradation](#) [Metabolic pathways](#) [Propanoate metabolism](#) [Pyruvate metabolism](#)
[Synthesis and degradation of ketone bodies](#) [Terpenoid backbone biosynthesis](#)
[Tryptophan metabolism](#) [Valine, leucine and isoleucine degradation](#)

Related Disease

[Alzheimer Disease](#) [Atherosclerosis](#) [Cardiovascular Diseases](#) [Chronic Disease](#)
[Coronary Artery Disease](#) [Coronary Disease](#) [Dementia](#) [Diabetes Mellitus, Type 2](#)
[Drug Toxicity](#) [Dyslipidemias](#) [Edema](#) [Genetic Predisposition to Disease](#)
[Hypercholesterolemia](#) [Hyperlipidemias](#) [Hypertension](#) [Kidney Diseases](#) [Metabolic Diseases](#)
[Metabolic Syndrome X](#) [Obesity](#)

... see more

[服務條款](#) | [隱私權政策](#) | [著作及商標](#) | [網站地圖](#)

©2016 亞諾法生技股份有限公司 Abnova Corporation. 版權所有.