



SZABO SCANDIC

Part of Europa Biosite

Produktinformation



Forschungsprodukte & Biochemikalien



Zellkultur & Verbrauchsmaterial



Diagnostik & molekulare Diagnostik



Laborgeräte & Service

Weitere Information auf den folgenden Seiten!
See the following pages for more information!



Lieferung & Zahlungsart

siehe unsere [Liefer- und Versandbedingungen](#)

Zuschläge

- Mindermengenzuschlag
- Trockeneiszuschlag
- Gefahrgutzuschlag
- Expressversand

SZABO-SCANDIC HandelsgmbH

Quellenstraße 110, A-1100 Wien

T. +43(0)1 489 3961-0

F. +43(0)1 489 3961-7

mail@szabo-scandic.com

www.szabo-scandic.com

[linkedin.com/company/szaboscandic](https://www.linkedin.com/company/szaboscandic) 

ACTA2 (Human) Matched Antibody Pair

Catalog # : H00000059-AP41

規格 : [1 Set]

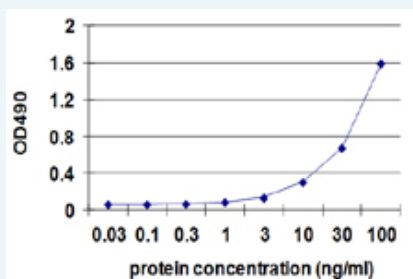
[List All](#)

Specification

Product Description: This antibody pair set comes with matched antibody pair to detect and quantify protein level of human ACTA2.

Reactivity: Human

Quality Control Testing: Standard curve using recombinant protein (H00000059-P01) as an analyte.



Sandwich ELISA detection sensitivity ranging from 0.3 ng/ml to 100 ng/ml.

Supplied Product: Antibody pair set content:
 1. Capture antibody: mouse monoclonal anti-ACTA2, IgG2b Kappa (100 ug)
 2. Detection antibody: biotinylated mouse monoclonal anti-ACTA2, IgG1 Kappa (50 ug)
 *Reagents are sufficient for at least 3-5 x 96 well plates using recommended protocols.

Storage Instruction: Store reagents of the antibody pair set at -20°C or lower. Please aliquot to avoid repeated freeze thaw cycle. Reagents should be returned to -20°C storage immediately after use.

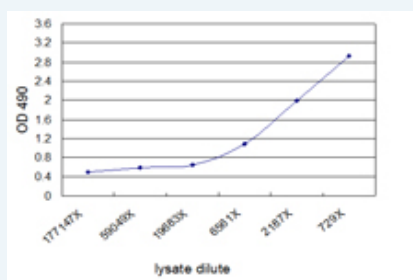
MSDS: [Download](#)

Applications

ELISA Pair (Recombinant protein)

[Protocol Download](#)

ELISA Pair (Transfected lysate)



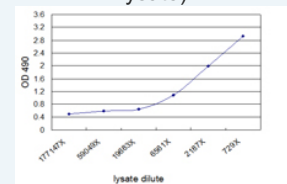
Sandwich ELISA detection sensitivity ranging from approximately 6561x to 729x dilution of the ACTA2 293T overexpression lysate (non-denatured). Standard curve using ACTA2 293T overexpression lysate (non-denatured) as an analyte.

[Protocol Download](#)

Application Image

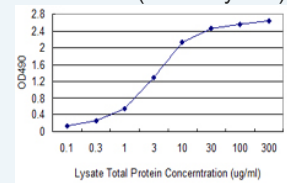
ELISA Pair (Recombinant protein)

ELISA Pair (Transfected lysate)



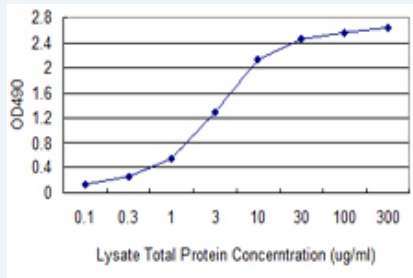
[enlarge](#)

ELISA Pair (Tissue lysate)



[enlarge](#)

ELISA Pair (Tissue lysate)



Standard curve using human uterus myoma tissue lysate as an analyte (non-denatured). Sandwich ELISA detection sensitivity ranging from 100 ng/ml to 300 ug/ml for lysate total protein.

 [Protocol Download](#)

Gene Information

Entrez GeneID: [59](#)

Gene Name: ACTA2

Gene Alias: AAT6,ACTSA

Gene Description: actin, alpha 2, smooth muscle, aorta

Omim ID: [102620](#)

Gene Ontology: [Hyperlink](#)

Gene Summary: The protein encoded by this gene belongs to the actin family of proteins, which are highly conserved proteins that play a role in cell motility, structure and integrity. Alpha, beta and gamma actin isoforms have been identified, with alpha actins being a major constituent of the contractile apparatus, while beta and gamma actins are involved in the regulation of cell motility. This actin is an alpha actin that is found in skeletal muscle. Defects in this gene cause aortic aneurysm familial thoracic type 6. Multiple alternatively spliced variants, encoding the same protein, have been identified. [provided by RefSeq]

Other Designations: OTTHUMP00000020042,alpha 2 actin,alpha-cardiac actin,growth-inhibiting gene 46

Gene Pathway

[Vascular smooth muscle contraction](#)

Related Disease

[Alzheimer Disease](#) [Cardiovascular Diseases](#) [Diabetes Mellitus, Type 2](#) [Edema](#)
[Genetic Predisposition to Disease](#)

[服務條款](#) | [隱私權政策](#) | [著作及商標](#) | [網站地圖](#)

©2016 亞諾法生技股份有限公司 Abnova Corporation. 版權所有.