



SZABO SCANDIC

Part of Europa Biosite

Produktinformation



Forschungsprodukte & Biochemikalien



Zellkultur & Verbrauchsmaterial



Diagnostik & molekulare Diagnostik



Laborgeräte & Service

Weitere Information auf den folgenden Seiten!
See the following pages for more information!



Lieferung & Zahlungsart

siehe unsere [Liefer- und Versandbedingungen](#)

Zuschläge

- Mindermengenzuschlag
- Trockeneiszuschlag
- Gefahrgutzuschlag
- Expressversand

SZABO-SCANDIC HandelsgmbH

Quellenstraße 110, A-1100 Wien

T. +43(0)1 489 3961-0

F. +43(0)1 489 3961-7

mail@szabo-scandic.com

www.szabo-scandic.com

[linkedin.com/company/szaboscandic](https://www.linkedin.com/company/szaboscandic) 

ACTN4 (Human) Matched Antibody Pair

Catalog # : H00000081-AP41

規格 : [1 Set]

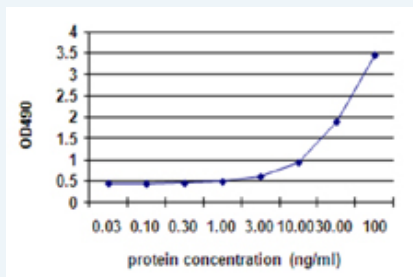
[List All](#)

Specification

Product Description: This antibody pair set comes with matched antibody pair to detect and quantify protein level of human ACTN4.

Reactivity: Human

Quality Control Testing: Standard curve using recombinant protein (H00000081-Q01) as an analyte.



Sandwich ELISA detection sensitivity ranging from 1 ng/ml to 100 ng/ml.


Supplied Product: Antibody pair set content:
 1. Capture antibody: mouse monoclonal anti-ACTN4, IgG2a (100 ug)
 2. Detection antibody: biotinylated mouse monoclonal anti-ACTN4, IgG2a Kappa (50 ug)
 *Reagents are sufficient for at least 3-5 x 96 well plates using recommended protocols.

Storage Instruction: Store reagents of the antibody pair set at -20°C or lower. Please aliquot to avoid repeated freeze thaw cycle. Reagents should be returned to -20°C storage immediately after use.

MSDS:  [Download](#)

Applications

ELISA Pair (Recombinant protein)

 [Protocol Download](#)

Gene Information

Entrez GeneID: [81](#)

Gene Name: ACTN4

Gene Alias: ACTININ-4, DKFZp686K23158, FSGS, FSGS1

Gene Description: actinin, alpha 4

Omim ID: [603278](#), [604638](#)

Gene Ontology: [Hyperlink](#)

Application Image

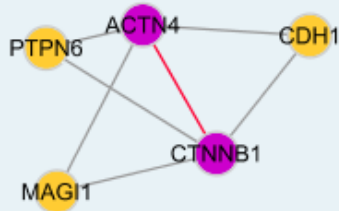
ELISA Pair (Recombinant protein)

Gene Summary: Alpha actinins belong to the spectrin gene superfamily which represents a diverse group of cytoskeletal proteins, including the alpha and beta spectrins and dystrophins. Alpha actinin is an actin-binding protein with multiple roles in different cell types. In nonmuscle cells, the cytoskeletal isoform is found along microfilament bundles and adherens-type junctions, where it is involved in binding actin to the membrane. In contrast, skeletal, cardiac, and smooth muscle isoforms are localized to the Z-disc and analogous dense bodies, where they help anchor the myofibrillar actin filaments. This gene encodes a nonmuscle, alpha actinin isoform which is concentrated in the cytoplasm, and thought to be involved in metastatic processes. Mutations in this gene have been associated with focal and segmental glomerulosclerosis. [provided by RefSeq]

Other actinin alpha4 isoform

Designations:

Interactome



Gene Pathway

[Adherens junction](#) [Arrhythmogenic right ventricular cardiomyopathy \(ARVC\)](#)
[Focal adhesion](#) [Leukocyte transendothelial migration](#) [Regulation of actin cytoskeleton](#)
[Systemic lupus erythematosus](#) [Tight junction](#)

Related Disease

[Alport syndrome](#) [Cardiovascular Diseases](#) [Diabetes Mellitus, Type 1](#)
[Diabetes Mellitus, Type 2](#) [Diabetic Nephropathies](#) [Edema](#)
[Genetic Predisposition to Disease](#) [Glomerulosclerosis, Focal Segmental](#) [Kidney Diseases](#)
[Proteinuria](#)