



# SZABO SCANDIC

Part of Europa Biosite

## Produktinformation



Forschungsprodukte & Biochemikalien



Zellkultur & Verbrauchsmaterial



Diagnostik & molekulare Diagnostik



Laborgeräte & Service

Weitere Information auf den folgenden Seiten!  
See the following pages for more information!



### Lieferung & Zahlungsart

siehe unsere [Liefer- und Versandbedingungen](#)

### Zuschläge

- Mindermengenzuschlag
- Trockeneiszuschlag
- Gefahrgutzuschlag
- Expressversand

### SZABO-SCANDIC HandelsgmbH

Quellenstraße 110, A-1100 Wien

T. +43(0)1 489 3961-0

F. +43(0)1 489 3961-7

[mail@szabo-scandic.com](mailto:mail@szabo-scandic.com)

[www.szabo-scandic.com](http://www.szabo-scandic.com)

[linkedin.com/company/szaboscandic](https://www.linkedin.com/company/szaboscandic) 

## ADD1 (Human) Matched Antibody Pair

Catalog # : H00000118-AP11

規格 : [ 1 Set ]

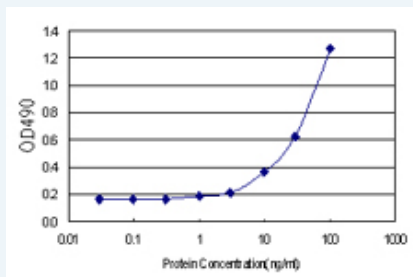
[List All](#)

### Specification

**Product Description:** This antibody pair set comes with matched antibody pair to detect and quantify protein level of human ADD1.

**Reactivity:** Human

**Quality Control Testing:** Standard curve using recombinant protein ( H00000118-P01 ) as an analyte.



Sandwich ELISA detection sensitivity ranging from 3 ng/ml to 100 ng/ml.

**Supplied Product:** Antibody pair set content:  
 1. Capture antibody: rabbit MaxPab® affinity purified polyclonal anti-ADD1 (100 ug)  
 2. Detection antibody: mouse monoclonal anti-ADD1, IgG1 Kappa (20 ug)  
 \*Reagents are sufficient for at least 1-2 x 96 well plates using recommended protocols.

**Storage Instruction:** Store reagents of the antibody pair set at -20°C or lower. Please aliquot to avoid repeated freeze thaw cycle. Reagents should be returned to -20°C storage immediately after use.

**MSDS:**  [Download](#)

### Applications

ELISA Pair (Recombinant protein)

 [Protocol Download](#)

### Gene Information

**Entrez GeneID:** [118](#)

**Gene Name:** ADD1

**Gene Alias:** ADDA, MGC3339, MGC44427

**Gene Description:** adducin 1 (alpha)

**Omim ID:** [102680](#), [145500](#)

**Gene Ontology:** [Hyperlink](#)

**Gene Summary:** Adducins are a family of cytoskeleton proteins encoded by three genes (alpha, beta, gamma). Adducin is a heterodimeric protein that consists of related subunits, which are produced from distinct genes but share a similar structure. Alpha- and beta-adducin include a protease-resistant N-terminal region and a protease-sensitive, hydrophilic C-terminal region. Alpha- and gamma-adducins are ubiquitously expressed. In contrast, beta-adducin is expressed at high levels in brain and hematopoietic tissues. Adducin binds with high affinity to Ca(2+)/calmodulin and is a substrate for protein kinases A and C. Alternative splicing results in multiple variants encoding distinct isoforms; however, not all variants have been fully described. [provided by RefSeq]

**Other Designations:** OTTHUMP00000151164,OTTHUMP00000151165,erythrocyte adducin alpha subunit

#### Related Disease

[Albuminuria](#) [Alcoholism](#) [Amyotrophic Lateral Sclerosis](#) [Amyotrophic lateral sclerosis](#) [Arterial Occlusive Diseases](#) [Arteriosclerosis](#) [Atherosclerosis](#) [Atherosclerosis](#) [Brain Ischemia](#) [Cardiovascular Diseases](#) [Carotid Artery Diseases](#) [Cerebral Hemorrhage](#) [Cerebral Palsy](#) [Cerebrovascular Accident](#) [Cerebrovascular Disorders](#) [Cognition Disorders](#) [Constriction, Pathologic](#) [Coronary Artery Disease](#) [Coronary Disease](#)

... see more

[服務條款](#) | [隱私權政策](#) | [著作及商標](#) | [網站地圖](#)

©2016 亞諾法生技股份有限公司 Abnova Corporation. 版權所有.