



SZABO SCANDIC

Part of Europa Biosite

Produktinformation



Forschungsprodukte & Biochemikalien



Zellkultur & Verbrauchsmaterial



Diagnostik & molekulare Diagnostik



Laborgeräte & Service

Weitere Information auf den folgenden Seiten!
See the following pages for more information!



Lieferung & Zahlungsart

siehe unsere [Liefer- und Versandbedingungen](#)

Zuschläge

- Mindermengenzuschlag
- Trockeneiszuschlag
- Gefahrgutzuschlag
- Expressversand

SZABO-SCANDIC HandelsgmbH

Quellenstraße 110, A-1100 Wien

T. +43(0)1 489 3961-0

F. +43(0)1 489 3961-7

mail@szabo-scandic.com

www.szabo-scandic.com

[linkedin.com/company/szaboscandic](https://www.linkedin.com/company/szaboscandic) 

ADH1C (Human) Matched Antibody Pair

Catalog # : H00000126-AP21

規格 : [1 Set]

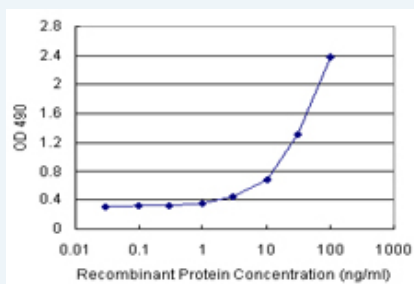
[List All](#)

Specification

Product Description: This antibody pair set comes with matched antibody pair to detect and quantify protein level of human ADH1C.

Reactivity: Human

Quality Control Testing: Standard curve using recombinant protein (H00000126-P01) as an analyte.



Sandwich ELISA detection sensitivity ranging from 1 ng/ml to 100 ng/ml.

Supplied Product: Antibody pair set content:
 1. Capture antibody: rabbit MaxPab® affinity purified polyclonal anti-ADH1C (100 ug)
 2. Detection antibody: mouse purified polyclonal anti-ADH1C (20 ug)
 *Reagents are sufficient for at least 1-2 x 96 well plates using recommended protocols.

Storage Instruction: Store reagents of the antibody pair set at -20°C or lower. Please aliquot to avoid repeated freeze thaw cycle. Reagents should be returned to -20°C storage immediately after use.

MSDS:  [Download](#)

Applications

ELISA Pair (Recombinant protein)

 [Protocol Download](#)

Gene Information

Entrez GeneID: [126](#)

Gene Name: ADH1C

Gene Alias: ADH3

Gene Description: alcohol dehydrogenase 1C (class I), gamma polypeptide

Omim ID: [103730](#)

Gene Ontology: [Hyperlink](#)

Gene Summary: This gene encodes class I alcohol dehydrogenase, gamma subunit, which is a member of the alcohol dehydrogenase family. Members of this enzyme family metabolize a wide variety of substrates, including ethanol, retinol, other aliphatic alcohols, hydroxysteroids, and lipid peroxidation products. Class I alcohol dehydrogenase, consisting of several homo- and heterodimers of alpha, beta, and gamma subunits, exhibits high activity for ethanol oxidation and plays a major role in ethanol catabolism. Three genes encoding alpha, beta and gamma subunits are tandemly organized in a genomic segment as a gene cluster. [provided by RefSeq]

Other Designations: ADH, gamma subunit, alcohol dehydrogenase 3 (class I), gamma polypeptide, aldehyde reductase, class I alcohol dehydrogenase, gamma subunit

Gene Pathway

[1- and 2-Methylnaphthalene degradation](#) [3-Chloroacrylic acid degradation](#)
[Drug metabolism - cytochrome P450](#) [Fatty acid metabolism](#) [Glycolysis / Gluconeogenesis](#)
[Metabolic pathways](#) [Metabolism of xenobiotics by cytochrome P450](#) [Retinol metabolism](#)
[Tyrosine metabolism](#)

Related Disease

[Adenocarcinoma](#) [Adenoma](#) [Adenomatous Polyps](#) [Alcohol Withdrawal Delirium](#)
[Alcohol-Induced Disorders](#) [Alcohol-Induced Disorders, Nervous System](#) [Alcoholism](#)
[Atherosclerosis](#) [Atherosclerosis](#) [Breast cancer](#) [Breast Neoplasms](#) [Calcinosis](#) [Carcinoma](#)
[Carcinoma, Hepatocellular](#) [Carcinoma, Squamous Cell](#) [Cardiovascular Diseases](#)
[Cell Transformation, Neoplastic](#) [Cerebrovascular Accident](#) [Chronic Disease](#)

... see more

[服務條款](#) | [隱私權政策](#) | [著作及商標](#) | [網站地圖](#)

©2016 亞諾法生技股份有限公司 Abnova Corporation. 版權所有.