



SZABO SCANDIC

Part of Europa Biosite

Produktinformation



Forschungsprodukte & Biochemikalien



Zellkultur & Verbrauchsmaterial



Diagnostik & molekulare Diagnostik



Laborgeräte & Service

Weitere Information auf den folgenden Seiten!
See the following pages for more information!



Lieferung & Zahlungsart

siehe unsere [Liefer- und Versandbedingungen](#)

Zuschläge

- Mindermengenzuschlag
- Trockeneiszuschlag
- Gefahrgutzuschlag
- Expressversand

SZABO-SCANDIC HandelsgmbH

Quellenstraße 110, A-1100 Wien

T. +43(0)1 489 3961-0

F. +43(0)1 489 3961-7

mail@szabo-scandic.com

www.szabo-scandic.com

[linkedin.com/company/szaboscandic](https://www.linkedin.com/company/szaboscandic) 

ADORA2A (Human) IP-WB Antibody Pair

Catalog # : H00000135-PW1

規格 : [1 Set]

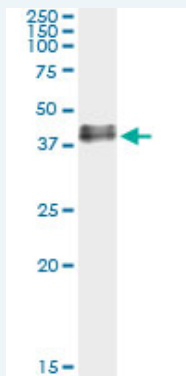
List All

Specification

Product Description: This IP-WB antibody pair set comes with one antibody for immunoprecipitation and another to detect the precipitated protein in western blot.

Reactivity: Human

Quality Control Testing: Immunoprecipitation-Western Blot (IP-WB)



Immunoprecipitation of ADORA2A transfected lysate using mouse monoclonal anti-ADORA2A and Protein A Magnetic Bead ([U0007](#)), and immunoblotted with rabbit polyclonal anti-ADORA2A.

Supplied Product: Antibody pair set content:
1. Antibody pair for IP: mouse monoclonal anti-ADORA2A (300 ug)
2. Antibody pair for WB: rabbit polyclonal anti-ADORA2A (50 ul)

Storage Instruction: Store reagents of the antibody pair set at -20°C or lower. Please aliquot to avoid repeated freeze thaw cycle. Reagents should be returned to -20°C storage immediately after use.

MSDS:  [Download](#)

Applications

Immunoprecipitation-Western Blot

 [Protocol Download](#)

Gene Information

Entrez GeneID: [135](#)

Gene Name: ADORA2A

Gene Alias: ADORA2,RDC8,hA2aR

Gene Description: adenosine A2a receptor

Omim ID: [102776](#)

Gene Ontology: [Hyperlink](#)

Application Image

Immunoprecipitation-Western Blot

Gene Summary: This gene encodes a protein which is one of several receptor subtypes for adenosine. The activity of the encoded protein, a G-protein coupled receptor family member, is mediated by G proteins which activate adenylyl cyclase. The encoded protein is abundant in basal ganglia, vasculature and platelets and it is a major target of caffeine. [provided by RefSeq]

Other adenosine A2 receptor,adenosine receptor subtype A2a

Designations:

Gene Pathway

[Calcium signaling pathway](#) [Neuroactive ligand-receptor interaction](#)
[Vascular smooth muscle contraction](#)

Related Disease

[Amphetamine-Related Disorders](#) [Anorexia Nervosa](#) [Anxiety Disorders](#) [Arousal](#)
[Arthritis, Rheumatoid](#) [Asthma](#) [Asthma](#) [Atherosclerosis](#) [Autistic Disorder](#) [Bulimia](#) [Calcinosis](#)
[Cardiovascular Diseases](#) [Cognition](#) [Coronary Artery Disease](#) [Depressive Disorder, Major](#)
[Diabetes Mellitus, Type 2](#) [Drug Hypersensitivity](#) [Drug Toxicity](#) [Edema](#)

... see more

[服務條款](#) | [隱私權政策](#) | [著作及商標](#) | [網站地圖](#)

©2016 亞諾法生技股份有限公司 Abnova Corporation. 版權所有.