



SZABO SCANDIC

Part of Europa Biosite

Produktinformation



Forschungsprodukte & Biochemikalien



Zellkultur & Verbrauchsmaterial



Diagnostik & molekulare Diagnostik



Laborgeräte & Service

Weitere Information auf den folgenden Seiten!
See the following pages for more information!



Lieferung & Zahlungsart

siehe unsere [Liefer- und Versandbedingungen](#)

Zuschläge

- Mindermengenzuschlag
- Trockeneiszuschlag
- Gefahrgutzuschlag
- Expressversand

SZABO-SCANDIC HandelsgmbH

Quellenstraße 110, A-1100 Wien

T. +43(0)1 489 3961-0

F. +43(0)1 489 3961-7

mail@szabo-scandic.com

www.szabo-scandic.com

[linkedin.com/company/szaboscandic](https://www.linkedin.com/company/szaboscandic) 

ADRB2 (Human) IP-WB Antibody Pair

Catalog # : H00000154-PW1

規格 : [1 Set]

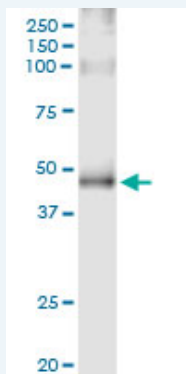
[List All](#)

Specification

Product Description: This IP-WB antibody pair set comes with one antibody for immunoprecipitation and another to detect the precipitated protein in western blot.

Reactivity: Human

Quality Control Testing: Immunoprecipitation-Western Blot (IP-WB)



Immunoprecipitation of ADRB2 transfected lysate using rabbit polyclonal anti-ADRB2 and Protein A Magnetic Bead ([U0007](#)), and immunoblotted with mouse purified polyclonal anti-ADRB2.

Supplied Product: Antibody pair set content:
 1. Antibody pair for IP: rabbit polyclonal anti-ADRB2 (300 ul)
 2. Antibody pair for WB: mouse purified polyclonal anti-ADRB2 (50 ug)

Storage Instruction: Store reagents of the antibody pair set at -20°C or lower. Please aliquot to avoid repeated freeze thaw cycle. Reagents should be returned to -20°C storage immediately after use.

MSDS:  [Download](#)

Applications

Immunoprecipitation-Western Blot

 [Protocol Download](#)

Gene Information

Entrez GeneID: [154](#)

Gene Name: ADRB2

Gene Alias: ADRB2R,ADRBR,B2AR,BAR,BETA2AR

Gene Description: adrenergic, beta-2-, receptor, surface

Omim ID: [109690](#), [600807](#), [601665](#)

Gene Ontology: [Hyperlink](#)

Application Image

Immunoprecipitation-Western Blot

Gene Summary: This gene encodes beta-2-adrenergic receptor which is a member of the G protein-coupled receptor superfamily. This receptor is directly associated with one of its ultimate effectors, the class C L-type calcium channel Ca(V)1.2. This receptor-channel complex also contains a G protein, an adenylyl cyclase, cAMP-dependent kinase, and the counterbalancing phosphatase, PP2A. The assembly of the signaling complex provides a mechanism that ensures specific and rapid signaling by this G protein-coupled receptor. This gene is intronless. Different polymorphic forms, point mutations, and/or downregulation of this gene are associated with nocturnal asthma, obesity and type 2 diabetes. [provided by RefSeq]

Other Designations: beta-2 adrenergic receptor, beta-2 adrenoceptor, catecholamine receptor

Gene Pathway

[Calcium signaling pathway](#) [Endocytosis](#) [Neuroactive ligand-receptor interaction](#)

Related Disease

[Acanthosis Nigricans](#) [Acromegaly](#) [Acute Disease](#) [Albuminuria](#) [Altitude Sickness](#) [Alzheimer Disease](#) [Alzheimer disease](#) [Amyotrophic Lateral Sclerosis](#) [Amyotrophic lateral sclerosis](#) [Anemia, Sickle Cell Anemia, sickle cell](#) [Angina, Unstable](#) [Anorexia Nervosa](#) [Arteriosclerosis](#) [Arthritis, Juvenile Rheumatoid Arthritis, Rheumatoid](#) [Asthma](#) [Asthma](#) [Atherosclerosis](#)

[... see more](#)