



SZABO SCANDIC

Part of Europa Biosite

Produktinformation



Forschungsprodukte & Biochemikalien



Zellkultur & Verbrauchsmaterial



Diagnostik & molekulare Diagnostik



Laborgeräte & Service

Weitere Information auf den folgenden Seiten!
See the following pages for more information!



Lieferung & Zahlungsart

siehe unsere [Liefer- und Versandbedingungen](#)

Zuschläge

- Mindermengenzuschlag
- Trockeneiszuschlag
- Gefahrgutzuschlag
- Expressversand

SZABO-SCANDIC HandelsgmbH

Quellenstraße 110, A-1100 Wien

T. +43(0)1 489 3961-0

F. +43(0)1 489 3961-7

mail@szabo-scandic.com

www.szabo-scandic.com

[linkedin.com/company/szaboscandic](https://www.linkedin.com/company/szaboscandic) 

AES (Human) IP-WB Antibody Pair

Catalog # : H00000166-PW2

規格 : [1 Set]

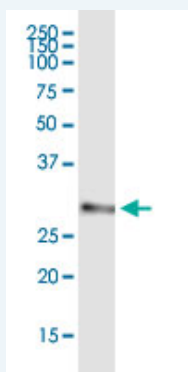
List All

Specification

Product Description: This IP-WB antibody pair set comes with one antibody for immunoprecipitation and another to detect the precipitated protein in western blot.

Reactivity: Human

Quality Control Testing: Immunoprecipitation-Western Blot (IP-WB)



Immunoprecipitation of AES transfected lysate using rabbit polyclonal anti-AES and Protein A Magnetic Bead ([U0007](#)), and immunoblotted with mouse purified polyclonal anti-AES.

Supplied Product: Antibody pair set content:
 1. Antibody pair for IP: rabbit polyclonal anti-AES (300 ul)
 2. Antibody pair for WB: mouse purified polyclonal anti-AES (50 ug)

Storage Instruction: Store reagents of the antibody pair set at -20°C or lower. Please aliquot to avoid repeated freeze thaw cycle. Reagents should be returned to -20°C storage immediately after use.

Applications

Immunoprecipitation-Western Blot

 [Protocol Download](#)

Gene Information

Entrez GeneID: [166](#)

Gene Name: AES

Gene Alias: AES-1,AES-2,ESP1,GRG,GRG5,TLE5

Gene Description: amino-terminal enhancer of split

Omim ID: [600188](#)

Gene Ontology: [Hyperlink](#)

Gene Summary: The protein encoded by this gene is similar in sequence to the amino

terminus of Drosophila enhancer of split groucho, a protein involved in neurogenesis during embryonic development. The encoded protein, which belongs to the groucho/TLE family of proteins, can function as a homooligomer or as a heterooligomer with other family members to dominantly repress the expression of other family member genes. Three transcript variants encoding different isoforms have been found for this gene. [provided by RefSeq

**Other
Designations:** -

[服務條款](#) | [隱私權政策](#) | [著作及商標](#) | [網站地圖](#)

©2016 亞諾法生技股份有限公司 Abnova Corporation. 版權所有.