



SZABO SCANDIC

Part of Europa Biosite

Produktinformation



Forschungsprodukte & Biochemikalien



Zellkultur & Verbrauchsmaterial



Diagnostik & molekulare Diagnostik



Laborgeräte & Service

Weitere Information auf den folgenden Seiten!
See the following pages for more information!



Lieferung & Zahlungsart

siehe unsere [Liefer- und Versandbedingungen](#)

Zuschläge

- Mindermengenzuschlag
- Trockeneiszuschlag
- Gefahrgutzuschlag
- Expressversand

SZABO-SCANDIC HandelsgmbH

Quellenstraße 110, A-1100 Wien

T. +43(0)1 489 3961-0

F. +43(0)1 489 3961-7

mail@szabo-scandic.com

www.szabo-scandic.com

[linkedin.com/company/szaboscandic](https://www.linkedin.com/company/szaboscandic) 

AKT2 (Human) Matched Antibody Pair

產品編號 #: H00000208-AP41

規格 : [1 Set]

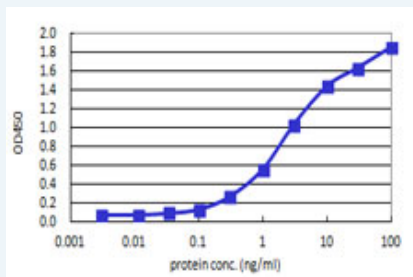
List All

Specification

Product Description: This antibody pair set comes with matched antibody pair to detect and quantify protein level of human AKT2.

Reactivity: Human

Quality Control Testing: Standard curve using recombinant protein (H00000208-Q01) as an analyte.



Sandwich ELISA detection sensitivity ranging from 0.03 ng/ml to 100 ng/ml.

Supplied Product: Antibody pair set content:
 1. Capture antibody: mouse monoclonal anti-AKT2, IgG1 Kappa (100 ug)
 2. Detection antibody: biotinylated mouse monoclonal anti-AKT2, IgG1 Kappa (50 ug)
 *Reagents are sufficient for at least 3-5 x 96 well plates using recommended protocols.

Storage Instruction: Store reagents of the antibody pair set at -20°C or lower. Please aliquot to avoid repeated freeze thaw cycle. Reagents should be returned to -20°C storage immediately after use.

Applications

ELISA Pair (Recombinant protein)

 [Protocol Download](#)

Gene Information

Entrez GeneID: [208](#)

Gene Name: AKT2

Gene Alias: PKBB,PKKBETA,PRKBB,RAC-BETA

Gene Description: v-akt murine thymoma viral oncogene homolog 2

Omim ID: [125853](#), [164731](#)

Gene Ontology: [Hyperlink](#)

Gene Summary: This gene is a putative oncogene encoding a protein belonging to a

subfamily of serine/threonine kinases containing SH2-like (Src homology 2-like) domains. The gene was shown to be amplified and overexpressed in 2 of 8 ovarian carcinoma cell lines and 2 of 15 primary ovarian tumors. Overexpression contributes to the malignant phenotype of a subset of human ductal pancreatic cancers. The encoded protein is a general protein kinase capable of phosphorylating several known proteins. [provided by RefSeq

Other Designations: Murine thymoma viral (v-akt) homolog-2, rac protein kinase beta

Gene Pathway

[Acute myeloid leukemia](#) [Adipocytokine signaling pathway](#) [Apoptosis](#)
[B cell receptor signaling pathway](#) [Chemokine signaling pathway](#) [Chronic myeloid leukemia](#)
[Colorectal cancer](#) [Endometrial cancer](#) [ErbB signaling pathway](#)
[Fc epsilon RI signaling pathway](#) [Fc gamma R-mediated phagocytosis](#) [Focal adhesion](#)
[Glioma](#) [Insulin signaling pathway](#) [Jak-STAT signaling pathway](#) [MAPK signaling pathway](#)
[Melanoma](#) [mTOR signaling pathway](#) [Neurotrophin signaling pathway](#)
[Non-small cell lung cancer](#) [Pancreatic cancer](#) [Pathways in cancer](#) [Prostate cancer](#)
[Renal cell carcinoma](#) [Small cell lung cancer](#) [T cell receptor signaling pathway](#)
[Tight junction](#) [Toll-like receptor signaling pathway](#) [VEGF signaling pathway](#)

Related Disease

[Adenocarcinoma](#) [Adenocarcinoma, Papillary](#) [Carcinoma, Non-Small-Cell Lung](#)
[Carcinoma, Squamous Cell](#) [Cardiovascular Diseases](#) [Diabetes Mellitus, Type 2](#)
[Drug Toxicity](#) [Edema](#) [Esophageal Neoplasms](#) [Genetic Predisposition to Disease](#)
[HIV Infections](#) [Hypercholesterolemia](#) [Insulin Resistance](#) [Lipodystrophy](#) [Lung Neoplasms](#)
[Metabolic Syndrome X](#) [Neoplasms, Glandular and Epithelial](#) [Ovarian cancer](#)
[Ovarian Neoplasms](#)

... see more