



# SZABO SCANDIC

Part of Europa Biosite

## Produktinformation



Forschungsprodukte & Biochemikalien



Zellkultur & Verbrauchsmaterial



Diagnostik & molekulare Diagnostik



Laborgeräte & Service

Weitere Information auf den folgenden Seiten!  
See the following pages for more information!



### Lieferung & Zahlungsart

siehe unsere [Liefer- und Versandbedingungen](#)

### Zuschläge

- Mindermengenzuschlag
- Trockeneiszuschlag
- Gefahrgutzuschlag
- Expressversand

### SZABO-SCANDIC HandelsgmbH

Quellenstraße 110, A-1100 Wien

T. +43(0)1 489 3961-0

F. +43(0)1 489 3961-7

[mail@szabo-scandic.com](mailto:mail@szabo-scandic.com)

[www.szabo-scandic.com](http://www.szabo-scandic.com)

[linkedin.com/company/szaboscandic](https://www.linkedin.com/company/szaboscandic) 

## ALDH1A1 (Human) Matched Antibody Pair

Catalog # : H00000216-AP11

規格 : [ 1 Set ]

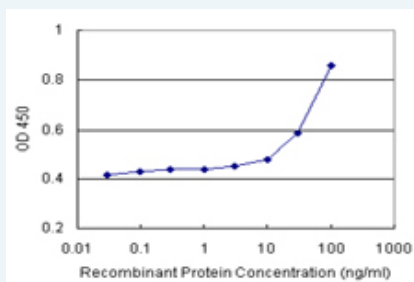
[List All](#)

### Specification

**Product Description:** This antibody pair set comes with matched antibody pair to detect and quantify protein level of human ALDH1A1.

**Reactivity:** Human

**Quality Control Testing:** Standard curve using recombinant protein ( H00000216-P01 ) as an analyte.



Sandwich ELISA detection sensitivity ranging from 10 ng/ml to 100 ng/ml.

**Supplied Product:** Antibody pair set content:  
 1. Capture antibody: rabbit MaxPab® affinity purified polyclonal anti-ALDH1A1 (100 ug)  
 2. Detection antibody: mouse monoclonal anti-ALDH1A1, IgG2a Kappa (20 ug)  
 \*Reagents are sufficient for at least 1-2 x 96 well plates using recommended protocols.

**Storage Instruction:** Store reagents of the antibody pair set at -20°C or lower. Please aliquot to avoid repeated freeze thaw cycle. Reagents should be returned to -20°C storage immediately after use.

**MSDS:**  [Download](#)

### Applications

ELISA Pair (Recombinant protein)

 [Protocol Download](#)

### Gene Information

**Entrez GeneID:** [216](#)

**Gene Name:** ALDH1A1

**Gene Alias:** ALDC,ALDH-E1,ALDH1,ALDH11,MGC2318,PUMB1,RALDH1

**Gene Description:** aldehyde dehydrogenase 1 family, member A1

**Omim ID:** [100640](#)

**Gene Ontology:** [Hyperlink](#)

### Application Image

ELISA Pair (Recombinant protein)

**Gene Summary:** This protein belongs to the aldehyde dehydrogenases family of proteins. Aldehyde dehydrogenase is the second enzyme of the major oxidative pathway of alcohol metabolism. Two major liver isoforms of this enzyme, cytosolic and mitochondrial, can be distinguished by their electrophoretic mobilities, kinetic properties, and subcellular localizations. Most Caucasians have two major isozymes, while approximately 50% of Orientals have only the cytosolic isozyme, missing the mitochondrial isozyme. A remarkably higher frequency of acute alcohol intoxication among Orientals than among Caucasians could be related to the absence of the mitochondrial isozyme. This gene encodes a cytosolic isoform, which has a high affinity for aldehydes. [provided by RefSeq]

**Other Designations:** ALDH class 1,acetaldehyde dehydrogenase 1,aldehyde dehydrogenase 1, soluble,aldehyde dehydrogenase 1A1,aldehyde dehydrogenase, liver cytosolic,retinal dehydrogenase 1,retinaldehyde dehydrogenase 1

### Gene Pathway

[Metabolic pathways](#) [Retinol metabolism](#)

### Related Disease

[Alcoholism](#) [Breast cancer](#) [Breast Neoplasms](#) [Carcinoma](#) [Chromosome Deletion](#) [Cleft Lip](#) [Cleft Palate](#) [Disease Models, Animal](#) [Drug Toxicity](#) [Genetic Predisposition to Disease](#) [Kidney Failure, Chronic](#) [Lymphoma](#) [Neoplasms](#) [Neoplasms, Germ Cell and Embryonal](#) [Ovarian cancer](#) [Ovarian Neoplasms](#) [Schizophrenia](#) [Schizophrenia](#) [Tobacco Use Disorder](#)

[服務條款](#) | [隱私權政策](#) | [著作及商標](#) | [網站地圖](#)

©2016 亞諾法生技股份有限公司 Abnova Corporation. 版權所有.