



SZABO SCANDIC

Part of Europa Biosite

Produktinformation



Forschungsprodukte & Biochemikalien



Zellkultur & Verbrauchsmaterial



Diagnostik & molekulare Diagnostik



Laborgeräte & Service

Weitere Information auf den folgenden Seiten!
See the following pages for more information!



Lieferung & Zahlungsart

siehe unsere [Liefer- und Versandbedingungen](#)

Zuschläge

- Mindermengenzuschlag
- Trockeneiszuschlag
- Gefahrgutzuschlag
- Expressversand

SZABO-SCANDIC HandelsgmbH

Quellenstraße 110, A-1100 Wien

T. +43(0)1 489 3961-0

F. +43(0)1 489 3961-7

mail@szabo-scandic.com

www.szabo-scandic.com

[linkedin.com/company/szaboscandic](https://www.linkedin.com/company/szaboscandic) 

ALDH1A1 (Human) IP-WB Antibody Pair

Catalog # : H00000216-PW2

規格 : [1 Set]

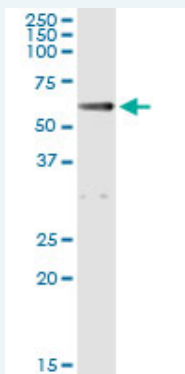
[List All](#)

Specification

Product Description: This IP-WB antibody pair set comes with one antibody for immunoprecipitation and another to detect the precipitated protein in western blot.

Reactivity: Human

Quality Control Testing: Immunoprecipitation-Western Blot (IP-WB)



Immunoprecipitation of ALDH1A1 transfected lysate using mouse monoclonal anti-ALDH1A1 and Protein A Magnetic Bead ([U0007](#)), and immunoblotted with rabbit polyclonal anti-ALDH1A1.

Supplied Product: Antibody pair set content:
1. Antibody pair for IP: mouse monoclonal anti-ALDH1A1 (300 ug)
2. Antibody pair for WB: rabbit polyclonal anti-ALDH1A1 (50 ul)

Storage Instruction: Store reagents of the antibody pair set at -20°C or lower. Please aliquot to avoid repeated freeze thaw cycle. Reagents should be returned to -20°C storage immediately after use.

MSDS:  [Download](#)

Applications

Immunoprecipitation-Western Blot

 [Protocol Download](#)

Gene Information

Entrez GeneID: [216](#)

Gene Name: ALDH1A1

Gene Alias: ALDC,ALDH-E1,ALDH1,ALDH11,MGC2318,PUMB1,RALDH1

Gene Description: aldehyde dehydrogenase 1 family, member A1

Omim ID: [100640](#)

Gene Ontology: [Hyperlink](#)

Application Image

Immunoprecipitation-Western Blot

Gene Summary: This protein belongs to the aldehyde dehydrogenases family of proteins. Aldehyde dehydrogenase is the second enzyme of the major oxidative pathway of alcohol metabolism. Two major liver isoforms of this enzyme, cytosolic and mitochondrial, can be distinguished by their electrophoretic mobilities, kinetic properties, and subcellular localizations. Most Caucasians have two major isozymes, while approximately 50% of Orientals have only the cytosolic isozyme, missing the mitochondrial isozyme. A remarkably higher frequency of acute alcohol intoxication among Orientals than among Caucasians could be related to the absence of the mitochondrial isozyme. This gene encodes a cytosolic isoform, which has a high affinity for aldehydes. [provided by RefSeq]

Other Designations: ALDH class 1,acetaldehyde dehydrogenase 1,aldehyde dehydrogenase 1, soluble,aldehyde dehydrogenase 1A1,aldehyde dehydrogenase, liver cytosolic,retinal dehydrogenase 1,retinaldehyde dehydrogenase 1

Gene Pathway

[Metabolic pathways](#) [Retinol metabolism](#)

Related Disease

[Alcoholism](#) [Breast cancer](#) [Breast Neoplasms](#) [Carcinoma](#) [Chromosome Deletion](#) [Cleft Lip](#) [Cleft Palate](#) [Disease Models, Animal](#) [Drug Toxicity](#) [Genetic Predisposition to Disease](#) [Kidney Failure, Chronic](#) [Lymphoma](#) [Neoplasms](#) [Neoplasms, Germ Cell and Embryonal](#) [Ovarian cancer](#) [Ovarian Neoplasms](#) [Schizophrenia](#) [Schizophrenia](#) [Tobacco Use Disorder](#)

[服務條款](#) | [隱私權政策](#) | [著作及商標](#) | [網站地圖](#)

©2016 亞諾法生技股份有限公司 Abnova Corporation. 版權所有.