



SZABO SCANDIC

Part of Europa Biosite

Produktinformation



Forschungsprodukte & Biochemikalien



Zellkultur & Verbrauchsmaterial



Diagnostik & molekulare Diagnostik



Laborgeräte & Service

Weitere Information auf den folgenden Seiten!
See the following pages for more information!



Lieferung & Zahlungsart

siehe unsere [Liefer- und Versandbedingungen](#)

Zuschläge

- Mindermengenzuschlag
- Trockeneiszuschlag
- Gefahrgutzuschlag
- Expressversand

SZABO-SCANDIC HandelsgmbH

Quellenstraße 110, A-1100 Wien

T. +43(0)1 489 3961-0

F. +43(0)1 489 3961-7

mail@szabo-scandic.com

www.szabo-scandic.com

[linkedin.com/company/szaboscandic](https://www.linkedin.com/company/szaboscandic) 

ALOX12 (Human) Matched Antibody Pair

Catalog # : H00000239-AP21

規格 : [1 Set]

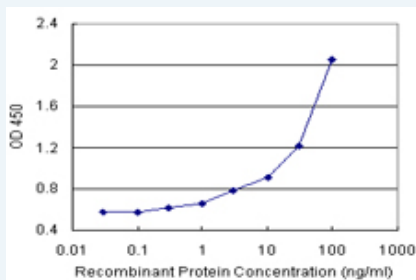
[List All](#)

Specification

Product Description: This antibody pair set comes with matched antibody pair to detect and quantify protein level of human ALOX12.

Reactivity: Human

Quality Control Testing: Standard curve using recombinant protein (H00000239-P01) as an analyte.



Sandwich ELISA detection sensitivity ranging from 3 ng/ml to 100 ng/ml.

Supplied Product: Antibody pair set content:
 1. Capture antibody: rabbit MaxPab® affinity purified polyclonal anti-ALOX12 (100 ug)
 2. Detection antibody: mouse purified polyclonal anti-ALOX12 (20 ug)
 *Reagents are sufficient for at least 1-2 x 96 well plates using recommended protocols.

Storage Instruction: Store reagents of the antibody pair set at -20°C or lower. Please aliquot to avoid repeated freeze thaw cycle. Reagents should be returned to -20°C storage immediately after use.

MSDS:  [Download](#)

Applications

ELISA Pair (Recombinant protein)

 [Protocol Download](#)

Gene Information

Entrez GeneID: [239](#)

Gene Name: ALOX12

Gene Alias: 12-LOX,12S-LOX,LOG12

Gene Description: arachidonate 12-lipoxygenase

Omim ID: [152391](#)

Gene Ontology: [Hyperlink](#)

Other 12(S)-lipoxygenase,platelet-type 12-lipoxygenase

Designations:

Gene Pathway

[Arachidonic acid metabolism](#) [Metabolic pathways](#)

Related Disease

[Adenocarcinoma](#) [Adenoma](#) [Albuminuria](#) [Alzheimer Disease](#) [Alzheimer disease](#) [Asthma](#)
[Asthma](#) [Atherosclerosis](#) [Atherosclerosis](#) [Bipolar Disorder](#) [Birth Weight](#) [Brain Ischemia](#)
[Calcinosis](#) [Carcinoma, Squamous Cell](#) [Cardiovascular Diseases](#) [Colon cancer](#)
[Colonic Neoplasms](#) [Colorectal Neoplasms](#) [Coronary Artery Disease](#)

... see more

[服務條款](#) | [隱私權政策](#) | [著作及商標](#) | [網站地圖](#)

©2016 亞諾法生技股份有限公司 Abnova Corporation. 版權所有.