



SZABO SCANDIC

Part of Europa Biosite

Produktinformation



Forschungsprodukte & Biochemikalien



Zellkultur & Verbrauchsmaterial



Diagnostik & molekulare Diagnostik



Laborgeräte & Service

Weitere Information auf den folgenden Seiten!
See the following pages for more information!



Lieferung & Zahlungsart

siehe unsere [Liefer- und Versandbedingungen](#)

Zuschläge

- Mindermengenzuschlag
- Trockeneiszuschlag
- Gefahrgutzuschlag
- Expressversand

SZABO-SCANDIC HandelsgmbH

Quellenstraße 110, A-1100 Wien

T. +43(0)1 489 3961-0

F. +43(0)1 489 3961-7

mail@szabo-scandic.com

www.szabo-scandic.com

[linkedin.com/company/szaboscandic](https://www.linkedin.com/company/szaboscandic) 

ALPL (Human) IP-WB Antibody Pair

Catalog # : H00000249-PW2

規格 : [1 Set]

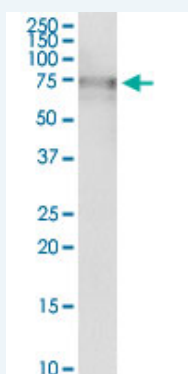
[List All](#)

Specification

Product Description: This IP-WB antibody pair set comes with one antibody for immunoprecipitation and another to detect the precipitated protein in western blot.

Reactivity: Human

Quality Control Testing: Immunoprecipitation-Western Blot (IP-WB)



Immunoprecipitation of ALPL transfected lysate using rabbit purified polyclonal anti-ALPL and Protein A Magnetic Bead (U0007), and immunoblotted with mouse purified polyclonal anti-ALPL.

Supplied Product: Antibody pair set content:
1. Antibody pair for IP: rabbit purified polyclonal anti-ALPL (300 ug)
2. Antibody pair for WB: mouse purified polyclonal anti-ALPL (50 ug)

Storage Instruction: Store reagents of the antibody pair set at -20°C or lower. Please aliquot to avoid repeated freeze thaw cycle. Reagents should be returned to -20°C storage immediately after use.

Applications

Immunoprecipitation-Western Blot

 [Protocol Download](#)

Gene Information

Entrez GeneID: [249](#)

Gene Name: ALPL

Gene Alias: AP-TNAP, FLJ40094, FLJ93059, HOPS, MGC161443, MGC167935, TNAP, TNS ALP

Gene Description: alkaline phosphatase, liver/bone/kidney

Omim ID: [146300](#), [171760](#), [241500](#), [241510](#)

Gene Ontology: [Hyperlink](#)

Application Image

Immunoprecipitation-Western Blot

Gene Summary: There are at least four distinct but related alkaline phosphatases: intestinal, placental, placental-like, and liver/bone/kidney (tissue non-specific). The first three are located together on chromosome 2, while the tissue non-specific form is located on chromosome 1. The product of this gene is a membrane bound glycosylated enzyme that is not expressed in any particular tissue and is, therefore, referred to as the tissue-nonspecific form of the enzyme. The exact physiological function of the alkaline phosphatases is not known. A proposed function of this form of the enzyme is matrix mineralization; however, mice that lack a functional form of this enzyme show normal skeletal development. This enzyme has been linked directly to hypophosphatasia, a disorder that is characterized by hypercalcemia and includes skeletal defects. The character of this disorder can vary, however, depending on the specific mutation since this determines age of onset and severity of symptoms. Alternatively spliced transcript variants, which encode the same protein, have been identified for this gene. [provided by RefSeq]

Other Designations: OTTHUMP00000002971, OTTHUMP00000002972, alkaline phosphatase, tissue-nonspecific isozyme, alkaline phosphomonoesterase, glycerophosphatase, liver/bone/kidney-type alkaline phosphatase, tissue non-specific alkaline phosphatase, tissue-nonspecific ALP

Gene Pathway

[Folate biosynthesis](#) [gamma-Hexachlorocyclohexane degradation](#) [Metabolic pathways](#)

Related Disease

[Alzheimer Disease](#) [Alzheimer disease](#) [Cardiovascular Diseases](#) [Chondrocalcinosis](#) [Diabetes Complications](#) [Fractures, Bone](#) [Genetic Predisposition to Disease](#) [Hypertension](#) [Hypophosphatasia](#) [Kidney Failure, Chronic](#) [Metabolic Syndrome X](#) [Neoplasms](#) [Osteoporosis](#) [Osteoporosis, Postmenopausal](#) [Spondylitis](#) [Ankylosing](#) [Tobacco Use Disorder](#)

[服務條款](#) | [隱私權政策](#) | [著作及商標](#) | [網站地圖](#)

©2016 亞諾法生技股份有限公司 Abnova Corporation. 版權所有.