



SZABO SCANDIC

Part of Europa Biosite

Produktinformation



Forschungsprodukte & Biochemikalien



Zellkultur & Verbrauchsmaterial



Diagnostik & molekulare Diagnostik



Laborgeräte & Service

Weitere Information auf den folgenden Seiten!
See the following pages for more information!



Lieferung & Zahlungsart

siehe unsere [Liefer- und Versandbedingungen](#)

Zuschläge

- Mindermengenzuschlag
- Trockeneiszuschlag
- Gefahrgutzuschlag
- Expressversand

SZABO-SCANDIC HandelsgmbH

Quellenstraße 110, A-1100 Wien

T. +43(0)1 489 3961-0

F. +43(0)1 489 3961-7

mail@szabo-scandic.com

www.szabo-scandic.com

[linkedin.com/company/szaboscandic](https://www.linkedin.com/company/szaboscandic) 

ALPP (Human) IP-WB Antibody Pair

Catalog # : H00000250-PW2

規格 : [1 Set]

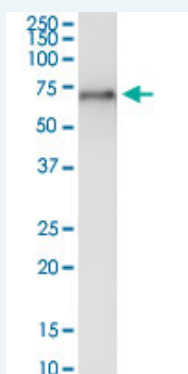
[List All](#)

Specification

Product Description: This IP-WB antibody pair set comes with one antibody for immunoprecipitation and another to detect the precipitated protein in western blot.

Reactivity: Human

Quality Control Testing: Immunoprecipitation-Western Blot (IP-WB)



Immunoprecipitation of ALPP transfected lysate using rabbit polyclonal anti-ALPP and Protein A Magnetic Bead ([U0007](#)), and immunoblotted with mouse purified polyclonal anti-ALPP.

Supplied Product: Antibody pair set content:
1. Antibody pair for IP: rabbit polyclonal anti-ALPP (300 ul)
2. Antibody pair for WB: mouse purified polyclonal anti-ALPP (50 ug)

Storage Instruction: Store reagents of the antibody pair set at -20°C or lower. Please aliquot to avoid repeated freeze thaw cycle. Reagents should be returned to -20°C storage immediately after use.

Applications

Immunoprecipitation-Western Blot

 [Protocol Download](#)

Gene Information

Entrez GeneID: [250](#)

Gene Name: ALPP

Gene Alias: ALP, FLJ61142, PALP, PLAP

Gene Description: alkaline phosphatase, placental (Regan isozyme)

Omim ID: [171800](#)

Gene Ontology: [Hyperlink](#)

Gene Summary: There are at least four distinct but related alkaline phosphatases:

Application Image

Immunoprecipitation-Western Blot

intestinal, placental, placental-like, and liver/bone/kidney (tissue non-specific). The first three are located together on chromosome 2 while the tissue non-specific form is located on chromosome 1. The product of this gene is a membrane bound glycosylated enzyme, also referred to as the heat stable form, that is expressed primarily in the placenta although it is closely related to the intestinal form of the enzyme as well as to the placental-like form. The coding sequence for this form of alkaline phosphatase is unique in that the 3' untranslated region contains multiple copies of an Alu family repeat. In addition, this gene is polymorphic and three common alleles (type 1, type 2 and type 3) for this form of alkaline phosphatase have been well characterized. [provided by RefSeq]

Other Designations: alkaline phosphomonoesterase, glycerophosphatase, placental alkaline phosphatase

Gene Pathway

[Folate biosynthesis](#) [gamma-Hexachlorocyclohexane degradation](#) [Metabolic pathways](#)

Related Disease

[Birth Weight](#) [Fetal Death](#)

[服務條款](#) | [隱私權政策](#) | [著作及商標](#) | [網站地圖](#)

©2016 亞諾法生技股份有限公司 Abnova Corporation. 版權所有.