



# SZABO SCANDIC

Part of Europa Biosite

## Produktinformation



Forschungsprodukte & Biochemikalien



Zellkultur & Verbrauchsmaterial



Diagnostik & molekulare Diagnostik



Laborgeräte & Service

Weitere Information auf den folgenden Seiten!  
See the following pages for more information!



### Lieferung & Zahlungsart

siehe unsere [Liefer- und Versandbedingungen](#)

### Zuschläge

- Mindermengenzuschlag
- Trockeneiszuschlag
- Gefahrgutzuschlag
- Expressversand

### SZABO-SCANDIC HandelsgmbH

Quellenstraße 110, A-1100 Wien

T. +43(0)1 489 3961-0

F. +43(0)1 489 3961-7

[mail@szabo-scandic.com](mailto:mail@szabo-scandic.com)

[www.szabo-scandic.com](http://www.szabo-scandic.com)

[linkedin.com/company/szaboscandic](https://www.linkedin.com/company/szaboscandic) 

## ALPPL2 (Human) Matched Antibody Pair

Catalog # : H00000251-AP51

規格 : [ 1 Set ]

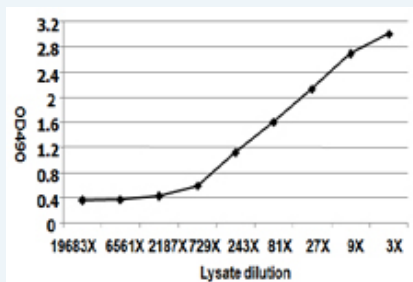
[List All](#)

### Specification

**Product Description:** This antibody pair set comes with matched antibody pair to detect and quantify protein level of human ALPPL2.

**Reactivity:** Human

**Quality Control Testing:** Standard curve using ALPPL2 293T overexpression lysate (non-denatured) as an analyte.



Sandwich ELISA detection sensitivity ranging from approximately 2187x to 3x dilution of the ALPPL2 293T overexpression lysate (non-denatured).

**Supplied Product:** Antibody pair set content:  
 1. Capture antibody: mouse monoclonal anti-ALPPL2, IgG2a Kappa (100 ug)  
 2. Detection antibody: rabbit purified polyclonal anti-ALPPL2 (50 ug)  
 \*Reagents are sufficient for at least 3-5 x 96 well plates using recommended protocols.

**Storage Instruction:** Store reagents of the antibody pair set at -20°C or lower. Please aliquot to avoid repeated freeze thaw cycle. Reagents should be returned to -20°C storage immediately after use.

**MSDS:**  [Download](#)

### Applications

ELISA Pair (Transfected lysate)

 [Protocol Download](#)

### Gene Information

**Entrez GeneID:** [251](#)

**Gene Name:** ALPPL2

**Gene Alias:** ALPG,ALPPL,GCAP

**Gene Description:** alkaline phosphatase, placental-like 2

**Omim ID:** [171810](#)

**Gene Ontology:** [Hyperlink](#)

### Application Image

ELISA Pair (Transfected lysate)

---

**Gene Summary:** There are at least four distinct but related alkaline phosphatases: intestinal, placental, placental-like, and liver/bone/kidney (tissue non-specific). The product of this gene is a membrane bound glycosylated enzyme, localized to testis, thymus and certain germ cell tumors, that is closely related to both the placental and intestinal forms of alkaline phosphatase. [provided by RefSeq]

---

**Other Designations:** Nagao isozyme, germ cell alkaline phosphatase, placental-like alkaline phosphatase, testicular and thymus alkaline phosphatase

---

#### **Gene Pathway**

---

[Folate biosynthesis](#) [gamma-Hexachlorocyclohexane degradation](#) [Metabolic pathways](#)

---

[服務條款](#) | [隱私權政策](#) | [著作及商標](#) | [網站地圖](#)

©2016 亞諾法生技股份有限公司 Abnova Corporation. 版權所有.