



# SZABO SCANDIC

Part of Europa Biosite

## Produktinformation



Forschungsprodukte & Biochemikalien



Zellkultur & Verbrauchsmaterial



Diagnostik & molekulare Diagnostik



Laborgeräte & Service

Weitere Information auf den folgenden Seiten!  
See the following pages for more information!



### Lieferung & Zahlungsart

siehe unsere [Liefer- und Versandbedingungen](#)

### Zuschläge

- Mindermengenzuschlag
- Trockeneiszuschlag
- Gefahrgutzuschlag
- Expressversand

### SZABO-SCANDIC HandelsgmbH

Quellenstraße 110, A-1100 Wien

T. +43(0)1 489 3961-0

F. +43(0)1 489 3961-7

[mail@szabo-scandic.com](mailto:mail@szabo-scandic.com)

[www.szabo-scandic.com](http://www.szabo-scandic.com)

[linkedin.com/company/szaboscandic](https://www.linkedin.com/company/szaboscandic) 

## APEX1 (Human) IP-WB Antibody Pair

Catalog # : H00000328-PW1

規格 : [ 1 Set ]

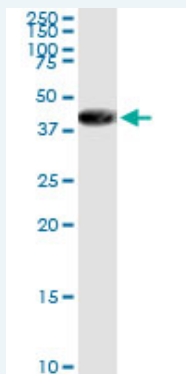
[List All](#)

### Specification

**Product Description:** This IP-WB antibody pair set comes with one antibody for immunoprecipitation and another to detect the precipitated protein in western blot.

**Reactivity:** Human

**Quality Control Testing:** Immunoprecipitation-Western Blot (IP-WB)



Immunoprecipitation of APEX1 transfected lysate using rabbit polyclonal anti-APEX1 and Protein A Magnetic Bead (U0007), and immunoblotted with mouse purified polyclonal anti-APEX1.

**Supplied Product:** Antibody pair set content:  
1. Antibody pair for IP: rabbit polyclonal anti-APEX1 (300 ul)  
2. Antibody pair for WB: mouse purified polyclonal anti-APEX1 (50 ug)

**Storage Instruction:** Store reagents of the antibody pair set at -20°C or lower. Please aliquot to avoid repeated freeze thaw cycle. Reagents should be returned to -20°C storage immediately after use.

**MSDS:**  [Download](#)

### Applications

**Immunoprecipitation-Western Blot**

 [Protocol Download](#)

### Gene Information

**Entrez GeneID:** [328](#)

**Gene Name:** APEX1

**Gene Alias:** APE,APE-1,APE1,APEN,APEX,APX,HAP1,REF-1,REF1

**Gene Description:** APEX nuclease (multifunctional DNA repair enzyme) 1

**Omim ID:** [107748](#)

**Gene Ontology:** [Hyperlink](#)

### Application Image

Immunoprecipitation-Western Blot

**Gene Summary:** Apurinic/aprimidinic (AP) sites occur frequently in DNA molecules by spontaneous hydrolysis, by DNA damaging agents or by DNA glycosylases that remove specific abnormal bases. AP sites are pre-mutagenic lesions that can prevent normal DNA replication so the cell contains systems to identify and repair such sites. Class II AP endonucleases cleave the phosphodiester backbone 5' to the AP site. This gene encodes the major AP endonuclease in human cells. Splice variants have been found for this gene; all encode the same protein. [provided by RefSeq]

**Other Designations:** AP endonuclease class I,AP lyase,APEX nuclease,DNA-(apurinic or apyrimidinic site) lyase,OTTHUMP00000163988,apurinic/apyrimidinic (abasic) endonuclease,apurinic/apyrimidinic exonuclease,deoxyribonuclease (apurinic or apyrimidinic),multifunctional DNA repa

### Gene Pathway

[Base excision repair](#)

### Related Disease

[Acute Disease](#) [Adenocarcinoma](#) [Adenomatous Polyposis Coli](#) [Adenomyoma](#)  
[Alzheimer Disease](#) [Alzheimer disease](#) [Amyotrophic Lateral Sclerosis](#)  
[Amyotrophic lateral sclerosis](#) [Anoxia](#) [Arsenic Poisoning](#) [Ataxia telangiectasia](#)  
[Biliary Tract Neoplasms](#) [Brain Neoplasms](#) [Breast cancer](#) [Breast Neoplasms](#)  
[Carcinoma, Non-Small-Cell Lung](#) [Carcinoma, Pancreatic Ductal](#) [Carcinoma, Squamous Cell](#)  
[Carcinoma, Transitional Cell](#)

... see more

[服務條款](#) | [隱私權政策](#) | [著作及商標](#) | [網站地圖](#)

©2016 亞諾法生技股份有限公司 Abnova Corporation. 版權所有.