



# SZABO SCANDIC

Part of Europa Biosite

## Produktinformation



Forschungsprodukte & Biochemikalien



Zellkultur & Verbrauchsmaterial



Diagnostik & molekulare Diagnostik



Laborgeräte & Service

Weitere Information auf den folgenden Seiten!  
See the following pages for more information!



### Lieferung & Zahlungsart

siehe unsere [Liefer- und Versandbedingungen](#)

### Zuschläge

- Mindermengenzuschlag
- Trockeneiszuschlag
- Gefahrgutzuschlag
- Expressversand

### SZABO-SCANDIC HandelsgmbH

Quellenstraße 110, A-1100 Wien

T. +43(0)1 489 3961-0

F. +43(0)1 489 3961-7

[mail@szabo-scandic.com](mailto:mail@szabo-scandic.com)

[www.szabo-scandic.com](http://www.szabo-scandic.com)

[linkedin.com/company/szaboscandic](https://www.linkedin.com/company/szaboscandic) 

## FASLG (Human) Matched Antibody Pair

Catalog # : H00000356-AP51

規格 : [ 1 Set ]

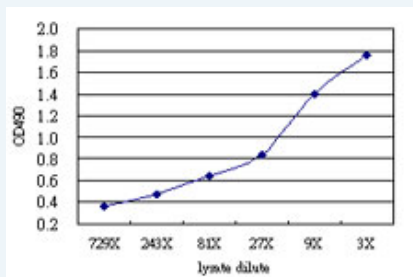
[List All](#)

### Specification

**Product Description:** This antibody pair set comes with matched antibody pair to detect and quantify protein level of human FASLG.

**Reactivity:** Human

**Quality Control Testing:** Standard curve using FASLG 293T overexpression lysate (non-denatured) as an analyte.



Sandwich ELISA detection sensitivity ranging from approximately 729x to 3x dilution of the FASLG 293T overexpression lysate (non-denatured).

**Supplied Product:** Antibody pair set content:  
 1. Capture antibody: mouse monoclonal anti-FASLG (100 ug)  
 2. Detection antibody: rabbit purified polyclonal anti-FASLG (50 ug)  
 \*Reagents are sufficient for at least 3-5 x 96 well plates using recommended protocols.

**Storage Instruction:** Store reagents of the antibody pair set at -20°C or lower. Please aliquot to avoid repeated freeze thaw cycle. Reagents should be returned to -20°C storage immediately after use.

**MSDS:**  [Download](#)

### Applications

ELISA Pair (Transfected lysate)

 [Protocol Download](#)

### Gene Information

**Entrez GeneID:** [356](#)

**Gene Name:** FASLG

**Gene Alias:** APT1LG1, CD178, CD95L, FASL, TNFSF6

**Gene Description:** Fas ligand (TNF superfamily, member 6)

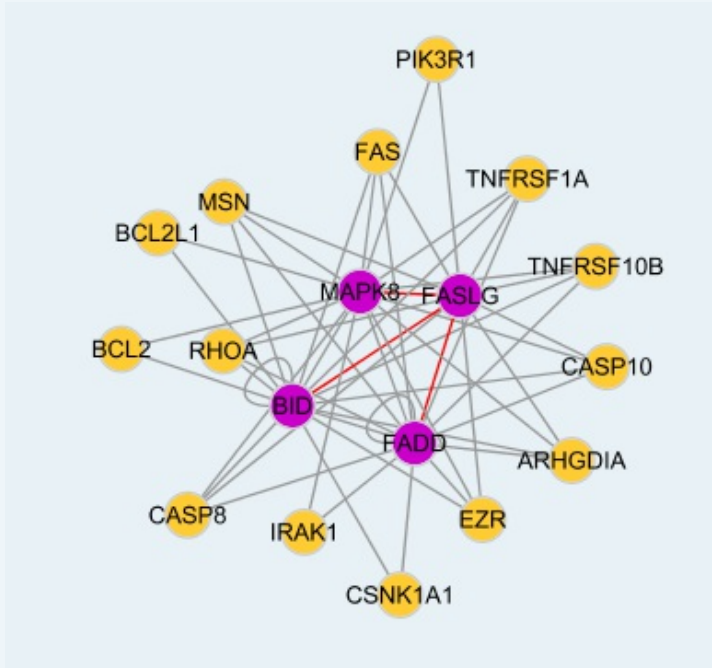
**Omim ID:** [134638](#), [152700](#)

**Gene Ontology:** [Hyperlink](#)

**Gene Summary:** The protein encoded by this gene is the ligand for FAS. Both are transmembrane proteins. Interaction of FAS with this ligand is critical in triggering apoptosis of some types of cells such as lymphocytes. Defects in this gene may be related to some cases of systemic lupus erythematosus (SLE). [provided by RefSeq]

**Other Designations:** CD95 ligand, OTTHUMP00000032708, apoptosis (APO-1) antigen ligand 1, fas ligand, tumor necrosis factor (ligand) superfamily, member 6

### Interactome



### Gene Pathway

[Allograft rejection](#) [Apoptosis](#) [Autoimmune thyroid disease](#)  
[Cytokine-cytokine receptor interaction](#) [Graft-versus-host disease](#) [MAPK signaling pathway](#)  
[Natural killer cell mediated cytotoxicity](#) [Neurotrophin signaling pathway](#) [Pathways in cancer](#)  
[Type I diabetes mellitus](#)

### Related Disease

[Acquired Immunodeficiency Syndrome](#) [Adenocarcinoma](#) [Alzheimer Disease](#)  
[Alzheimer disease](#) [Autoimmune Diseases](#) [Azoospermia](#) [Breast cancer](#) [Breast Neoplasms](#)  
[Carcinoma in Situ](#) [Carcinoma, Basal Cell](#) [Carcinoma, Ductal](#) [Carcinoma, Hepatocellular](#)  
[Carcinoma, Large Cell](#) [Carcinoma, Non-Small-Cell Lung](#) [Carcinoma, Papillary](#)  
[Carcinoma, Renal Cell](#) [Carcinoma, Squamous Cell](#) [Carcinoma, Transitional Cell](#)  
[Cervical Intraepithelial Neoplasia](#)

... see more

[服務條款](#) | [隱私權政策](#) | [著作及商標](#) | [網站地圖](#)

©2016 亞諾法生技股份有限公司 Abnova Corporation. 版權所有.