



# SZABO SCANDIC

Part of Europa Biosite

## Produktinformation



Forschungsprodukte & Biochemikalien



Zellkultur & Verbrauchsmaterial



Diagnostik & molekulare Diagnostik



Laborgeräte & Service

Weitere Information auf den folgenden Seiten!  
See the following pages for more information!



### Lieferung & Zahlungsart

siehe unsere [Liefer- und Versandbedingungen](#)

### Zuschläge

- Mindermengenzuschlag
- Trockeneiszuschlag
- Gefahrgutzuschlag
- Expressversand

### SZABO-SCANDIC HandelsgmbH

Quellenstraße 110, A-1100 Wien

T. +43(0)1 489 3961-0

F. +43(0)1 489 3961-7

[mail@szabo-scandic.com](mailto:mail@szabo-scandic.com)

[www.szabo-scandic.com](http://www.szabo-scandic.com)

[linkedin.com/company/szaboscandic](https://www.linkedin.com/company/szaboscandic) 

## ART3 (Human) Matched Antibody Pair

Catalog # : H00000419-AP11

規格 : [ 1 Set ]

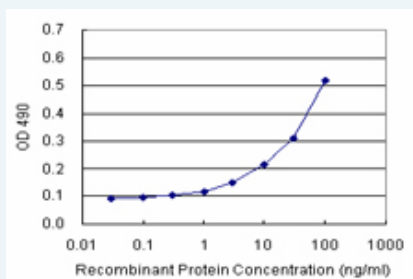
[List All](#)

### Specification

**Product Description:** This antibody pair set comes with matched antibody pair to detect and quantify protein level of human ART3.

**Reactivity:** Human

**Quality Control Testing:** Standard curve using recombinant protein ( H00000419-P01 ) as an analyte.



Sandwich ELISA detection sensitivity ranging from 3 ng/ml to 100 ng/ml.

**Supplied Product:** Antibody pair set content:  
 1. Capture antibody: rabbit MaxPab® affinity purified polyclonal anti-ART3 (100 ug)  
 2. Detection antibody: mouse monoclonal anti-ART3, IgG2b Kappa (20 ug)  
 \*Reagents are sufficient for at least 1-2 x 96 well plates using recommended protocols.

**Storage Instruction:** Store reagents of the antibody pair set at -20°C or lower. Please aliquot to avoid repeated freeze thaw cycle. Reagents should be returned to -20°C storage immediately after use.

**MSDS:**  [Download](#)

### Applications

ELISA Pair (Recombinant protein)

 [Protocol Download](#)

### Gene Information

**Entrez GeneID:** [419](#)

**Gene Name:** ART3

**Gene Alias:** FLJ26404

**Gene Description:** ADP-ribosyltransferase 3

**Omim ID:** [603086](#)

**Gene Ontology:** [Hyperlink](#)

**Gene Summary:** ADP-ribosylation is a reversible posttranslational modification used to regulate protein function. ADP-ribosyltransferases, such as ART3, transfer ADP-ribose from NAD<sup>+</sup> to the target protein, and ADP-ribosylhydrolases (see PARG; MIM 603501) reverse the reaction (Glowacki et al., 2002 [PubMed 12070318]).[supplied by OMIM

**Other** mono-ADP-ribosyltransferase

**Designations:**

#### **Related Disease**

[Azoospermia](#) [Cardiovascular Diseases](#) [Diabetes Mellitus, Type 2](#) [Edema](#)  
[Genetic Predisposition to Disease](#) [Tobacco Use Disorder](#)

---

[服務條款](#) | [隱私權政策](#) | [著作及商標](#) | [網站地圖](#)

©2016 亞諾法生技股份有限公司 Abnova Corporation. 版權所有.