



# SZABO SCANDIC

Part of Europa Biosite

## Produktinformation



Forschungsprodukte & Biochemikalien



Zellkultur & Verbrauchsmaterial



Diagnostik & molekulare Diagnostik



Laborgeräte & Service

Weitere Information auf den folgenden Seiten!  
See the following pages for more information!



### Lieferung & Zahlungsart

siehe unsere [Liefer- und Versandbedingungen](#)

### Zuschläge

- Mindermengenzuschlag
- Trockeneiszuschlag
- Gefahrgutzuschlag
- Expressversand

### SZABO-SCANDIC HandelsgmbH

Quellenstraße 110, A-1100 Wien

T. +43(0)1 489 3961-0

F. +43(0)1 489 3961-7

[mail@szabo-scandic.com](mailto:mail@szabo-scandic.com)

[www.szabo-scandic.com](http://www.szabo-scandic.com)

[linkedin.com/company/szaboscandic](https://www.linkedin.com/company/szaboscandic) 

## CCND1 (Human) IP-WB Antibody Pair

Catalog # : H00000595-PW2

規格 : [ 1 Set ]

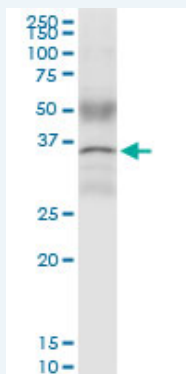
List All

### Specification

**Product Description:** This IP-WB antibody pair set comes with one antibody for immunoprecipitation and another to detect the precipitated protein in western blot.

**Reactivity:** Human

**Quality Control Testing:** Immunoprecipitation-Western Blot (IP-WB)



Immunoprecipitation of CCND1 transfected lysate using rabbit polyclonal anti-CCND1 and Protein A Magnetic Bead (U0007), and immunoblotted with mouse purified polyclonal anti-CCND1.

**Supplied Product:** Antibody pair set content:  
1. Antibody pair for IP: rabbit polyclonal anti-CCND1 (300 ul)  
2. Antibody pair for WB: mouse purified polyclonal anti-CCND1 (50 ug)

**Storage Instruction:** Store reagents of the antibody pair set at -20°C or lower. Please aliquot to avoid repeated freeze thaw cycle. Reagents should be returned to -20°C storage immediately after use.

**MSDS:**  [Download](#)

### Applications

Immunoprecipitation-Western Blot

 [Protocol Download](#)

### Gene Information

**Entrez GeneID:** [595](#)

**Gene Name:** CCND1

**Gene Alias:** BCL1,D11S287E,PRAD1,U21B31

**Gene Description:** cyclin D1

**Omim ID:** [151400](#), [168461](#), [193300](#), [254500](#)

**Gene Ontology:** [Hyperlink](#)

### Application Image

Immunoprecipitation-Western Blot

**Gene Summary:** The protein encoded by this gene belongs to the highly conserved cyclin family, whose members are characterized by a dramatic periodicity in protein abundance throughout the cell cycle. Cyclins function as regulators of CDK kinases. Different cyclins exhibit distinct expression and degradation patterns which contribute to the temporal coordination of each mitotic event. This cyclin forms a complex with and functions as a regulatory subunit of CDK4 or CDK6, whose activity is required for cell cycle G1/S transition. This protein has been shown to interact with tumor suppressor protein Rb and the expression of this gene is regulated positively by Rb. Mutations, amplification and overexpression of this gene, which alters cell cycle progression, are observed frequently in a variety of tumors and may contribute to tumorigenesis. [provided by RefSeq]

**Other Designations:** B-cell CLL/lymphoma 1, G1/S-specific cyclin D1

### Gene Pathway

[Acute myeloid leukemia](#) [Bladder cancer](#) [Cell cycle](#) [Chronic myeloid leukemia](#) [Colorectal cancer](#) [Endometrial cancer](#) [Focal adhesion](#) [Glioma](#) [Jak-STAT signaling pathway](#) [Melanoma](#) [Non-small cell lung cancer](#) [p53 signaling pathway](#) [Pancreatic cancer](#) [Pathways in cancer](#) [Prostate cancer](#) [Small cell lung cancer](#) [Thyroid cancer](#) [Wnt signaling pathway](#)

### Related Disease

[Adenocarcinoma](#) [Adenocarcinoma, Mucinous Adenoma](#) [Ataxia telangiectasia](#) [Barrett Esophagus](#) [Brain Neoplasms](#) [Breast cancer](#) [Breast Neoplasms](#) [Breast Neoplasms, Male](#) [Carcinoma](#) [Carcinoma in Situ](#) [Carcinoma, Basal Cell](#) [Carcinoma, Hepatocellular](#) [Carcinoma, Non-Small-Cell Lung](#) [Carcinoma, Renal Cell](#) [Carcinoma, Squamous Cell](#) [Carcinoma, Transitional Cell](#) [Cell Transformation, Neoplastic](#) [Cell Transformation, Viral](#)

... see more