



SZABO SCANDIC

Part of Europa Biosite

Produktinformation



Forschungsprodukte & Biochemikalien



Zellkultur & Verbrauchsmaterial



Diagnostik & molekulare Diagnostik



Laborgeräte & Service

Weitere Information auf den folgenden Seiten!
See the following pages for more information!



Lieferung & Zahlungsart

siehe unsere [Liefer- und Versandbedingungen](#)

Zuschläge

- Mindermengenzuschlag
- Trockeneiszuschlag
- Gefahrgutzuschlag
- Expressversand

SZABO-SCANDIC HandelsgmbH

Quellenstraße 110, A-1100 Wien

T. +43(0)1 489 3961-0

F. +43(0)1 489 3961-7

mail@szabo-scandic.com

www.szabo-scandic.com

[linkedin.com/company/szaboscandic](https://www.linkedin.com/company/szaboscandic) 

PRDM1 (Human) Matched Antibody Pair

Catalog # : H00000639-AP41

規格 : [1 Set]

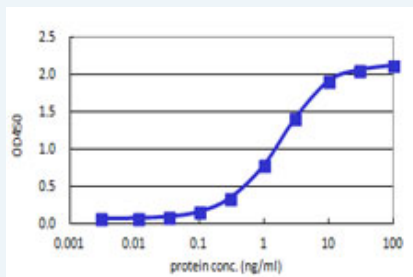
[List All](#)

Specification

Product Description: This antibody pair set comes with matched antibody pair to detect and quantify protein level of human PRDM1.

Reactivity: Human

Quality Control Testing: Standard curve using recombinant protein (H00000639-Q01) as an analyte.



Sandwich ELISA detection sensitivity ranging from 0.03 ng/ml to 100 ng/ml.

Supplied Product: Antibody pair set content:
 1. Capture antibody: mouse monoclonal anti-PRDM1, IgG2a Kappa (100 ug)
 2. Detection antibody: biotinylated mouse monoclonal anti-PRDM1, IgG1 Kappa (50 ug)
 *Reagents are sufficient for at least 3-5 x 96 well plates using recommended protocols.

Storage Instruction: Store reagents of the antibody pair set at -20°C or lower. Please aliquot to avoid repeated freeze thaw cycle. Reagents should be returned to -20°C storage immediately after use.

Applications

ELISA Pair (Recombinant protein)

 [Protocol Download](#)

Gene Information

Entrez GeneID: [639](#)

Gene Name: PRDM1

Gene Alias: BLIMP1,MGC118922,MGC118923,MGC118924,MGC118925,PRDI-BF1

Gene Description: PR domain containing 1, with ZNF domain

Omim ID: [603423](#)

Gene Ontology: [Hyperlink](#)

Gene Summary: This gene encodes a protein that acts as a repressor of beta-interferon

gene expression. The protein binds specifically to the PRDI (positive regulatory domain I element) of the beta-IFN gene promoter. Transcription of this gene increases upon virus induction. Two alternatively spliced transcript variants that encode different isoforms have been reported. [provided by RefSeq]

Other B-lymphocyte-induced maturation protein
Designations: 1,OTTHUMP00000016918,PR-domain zinc finger protein 1,PRDI-binding factor-1,beta-interferon gene positive-regulatory domain I binding factor,positive regulatory domain I-binding factor 1

Related Disease

Arthritis, Rheumatoid Crohn Disease Genetic Predisposition to Disease IgA Deficiency Inflammatory Bowel Diseases Kidney Failure, Chronic Lupus Erythematosus, Systemic Tobacco Use Disorder

[服務條款](#) | [隱私權政策](#) | [著作及商標](#) | [網站地圖](#)

©2016 亞諾法生技股份有限公司 Abnova Corporation. 版權所有.