



SZABO SCANDIC

Part of Europa Biosite

Produktinformation



Forschungsprodukte & Biochemikalien



Zellkultur & Verbrauchsmaterial



Diagnostik & molekulare Diagnostik



Laborgeräte & Service

Weitere Information auf den folgenden Seiten!
See the following pages for more information!



Lieferung & Zahlungsart

siehe unsere [Liefer- und Versandbedingungen](#)

Zuschläge

- Mindermengenzuschlag
- Trockeneiszuschlag
- Gefahrgutzuschlag
- Expressversand

SZABO-SCANDIC HandelsgmbH

Quellenstraße 110, A-1100 Wien

T. +43(0)1 489 3961-0

F. +43(0)1 489 3961-7

mail@szabo-scandic.com

www.szabo-scandic.com

[linkedin.com/company/szaboscandic](https://www.linkedin.com/company/szaboscandic) 

SERPING1 (Human) IP-WB Antibody Pair

Catalog # : H00000710-PW1

規格 : [1 Set]

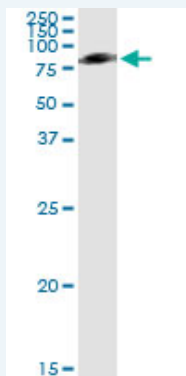
[List All](#)

Specification

Product Description: This IP-WB antibody pair set comes with one antibody for immunoprecipitation and another to detect the precipitated protein in western blot.

Reactivity: Human

Quality Control Testing: Immunoprecipitation-Western Blot (IP-WB)



Immunoprecipitation of SERPING1 transfected lysate using mouse monoclonal anti-SERPING1 and Protein A Magnetic Bead ([U0007](#)), and immunoblotted with rabbit polyclonal anti-SERPING1.

Supplied Product: Antibody pair set content:
 1. Antibody pair for IP: mouse monoclonal anti-SERPING1 (300 ug)
 2. Antibody pair for WB: rabbit polyclonal anti-SERPING1 (50 ul)

Storage Instruction: Store reagents of the antibody pair set at -20°C or lower. Please aliquot to avoid repeated freeze thaw cycle. Reagents should be returned to -20°C storage immediately after use.

MSDS:  [Download](#)

Applications

Immunoprecipitation-Western Blot

 [Protocol Download](#)

Gene Information

Entrez GeneID: [710](#)

Gene Name: SERPING1

Gene Alias: C1IN,C1INH,C1NH,HAE1,HAE2

Gene Description: serpin peptidase inhibitor, clade G (C1 inhibitor), member 1

Omim ID: [106100](#), [606860](#)

Gene Ontology: [Hyperlink](#)

Application Image

Immunoprecipitation-Western Blot

Gene Summary: This gene encodes a highly glycosylated plasma protein involved in the regulation of the complement cascade. Its protein inhibits activated C1r and C1s of the first complement component and thus regulates complement activation. Deficiency of this protein is associated with hereditary angioneurotic oedema (HANE). Alternative splicing results in multiple transcript variants encoding the same isoform. [provided by RefSeq]

Other complement component 1 inhibitor,plasma protease C1
Designations: inhibitor,serine/cysteine proteinase inhibitor clade G member 1

Gene Pathway

[Complement and coagulation cascades](#)

Related Disease

[Acute Disease](#) [Birth Weight](#) [Choroid Diseases](#) [Choroidal Neovascularization](#)
[Genetic Predisposition to Disease](#) [Glioblastoma](#) [Glioma](#) [Kidney Failure](#), [Chronic Leukemia](#)
[Leukemia, Myeloid, Acute](#) [Lymphoma, Non-Hodgkin](#) [Macular Degeneration](#)
[Meningeal Neoplasms](#) [Meningioma](#) [Meningococcal Infections](#) [Otitis Media](#)
[Ovarian Neoplasms](#) [Recurrence](#)

[服務條款](#) | [隱私權政策](#) | [著作及商標](#) | [網站地圖](#)

©2016 亞諾法生技股份有限公司 Abnova Corporation. 版權所有.