



# SZABO SCANDIC

Part of Europa Biosite

## Produktinformation



Forschungsprodukte & Biochemikalien



Zellkultur & Verbrauchsmaterial



Diagnostik & molekulare Diagnostik



Laborgeräte & Service

Weitere Information auf den folgenden Seiten!  
See the following pages for more information!



### Lieferung & Zahlungsart

siehe unsere [Liefer- und Versandbedingungen](#)

### Zuschläge

- Mindermengenzuschlag
- Trockeneiszuschlag
- Gefahrgutzuschlag
- Expressversand

### SZABO-SCANDIC HandelsgmbH

Quellenstraße 110, A-1100 Wien

T. +43(0)1 489 3961-0

F. +43(0)1 489 3961-7

[mail@szabo-scandic.com](mailto:mail@szabo-scandic.com)

[www.szabo-scandic.com](http://www.szabo-scandic.com)

[linkedin.com/company/szaboscandic](https://www.linkedin.com/company/szaboscandic) 

## C1QA (Human) IP-WB Antibody Pair

Catalog # : H00000712-PW2

規格 : [ 1 Set ]

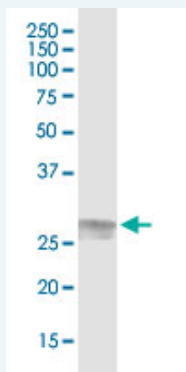
List All

### Specification

**Product Description:** This IP-WB antibody pair set comes with one antibody for immunoprecipitation and another to detect the precipitated protein in western blot.

**Reactivity:** Human

**Quality Control Testing:** Immunoprecipitation-Western Blot (IP-WB)



Immunoprecipitation of C1QA transfected lysate using rabbit polyclonal anti-C1QA and Protein A Magnetic Bead (U0007), and immunoblotted with mouse purified polyclonal anti-C1QA.

**Supplied Product:** Antibody pair set content:  
 1. Antibody pair for IP: rabbit polyclonal anti-C1QA (300 ul)  
 2. Antibody pair for WB: mouse purified polyclonal anti-C1QA (50 ug)

**Storage Instruction:** Store reagents of the antibody pair set at -20°C or lower. Please aliquot to avoid repeated freeze thaw cycle. Reagents should be returned to -20°C storage immediately after use.

### Applications

Immunoprecipitation-Western Blot

 [Protocol Download](#)

### Gene Information

**Entrez GeneID:** [712](#)

**Gene Name:** C1QA

**Gene Alias:** -

**Gene Description:** complement component 1, q subcomponent, A chain

**Omim ID:** [120550](#)

**Gene Ontology:** [Hyperlink](#)

**Gene Summary:** This gene encodes a major constituent of the human complement

subcomponent C1q. C1q associates with C1r and C1s in order to yield the first component of the serum complement system. Deficiency of C1q has been associated with lupus erythematosus and glomerulonephritis. C1q is composed of 18 polypeptide chains: six A-chains, six B-chains, and six C-chains. Each chain contains a collagen-like region located near the N terminus and a C-terminal globular region. The A-, B-, and C-chains are arranged in the order A-C-B on chromosome 1. This gene encodes the A-chain polypeptide of human complement subcomponent C1q. [provided by RefSeq]

**Other Designations:** OTTHUMP0000002936, complement component 1, q subcomponent, alpha polypeptide, complement component C1q, A chain

### Gene Pathway

[Complement and coagulation cascades](#) [Prion diseases](#) [Systemic lupus erythematosus](#)

### Related Disease

[Amyloid Neuropathies, Familial](#) [Birth Weight](#) [Bone Neoplasms](#) [Brain Neoplasms](#)  
[Breast cancer](#) [Breast Neoplasms](#) [Carcinoma](#) [Cardiovascular Diseases](#)  
[Diabetes Mellitus, Type 2](#) [Edema](#) [Genetic Predisposition to Disease](#) [Glioblastoma](#) [Glioma](#)  
[Leukemia](#) [Leukemia, Myeloid, Acute](#) [Liver Neoplasms](#) [Lupus Erythematosus, Cutaneous](#)  
[Lupus Erythematosus, Systemic](#) [Lupus Nephritis](#)

[... see more](#)

[服務條款](#) | [隱私權政策](#) | [著作及商標](#) | [網站地圖](#)

©2016 亞諾法生技股份有限公司 Abnova Corporation. 版權所有.