



SZABO SCANDIC

Part of Europa Biosite

Produktinformation



Forschungsprodukte & Biochemikalien



Zellkultur & Verbrauchsmaterial



Diagnostik & molekulare Diagnostik



Laborgeräte & Service

Weitere Information auf den folgenden Seiten!
See the following pages for more information!



Lieferung & Zahlungsart

siehe unsere [Liefer- und Versandbedingungen](#)

Zuschläge

- Mindermengenzuschlag
- Trockeneiszuschlag
- Gefahrgutzuschlag
- Expressversand

SZABO-SCANDIC HandelsgmbH

Quellenstraße 110, A-1100 Wien

T. +43(0)1 489 3961-0

F. +43(0)1 489 3961-7

mail@szabo-scandic.com

www.szabo-scandic.com

[linkedin.com/company/szaboscandic](https://www.linkedin.com/company/szaboscandic) 

C1QC (Human) IP-WB Antibody Pair

Catalog # : H00000714-PW2

規格 : [1 Set]

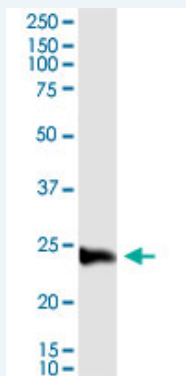
List All

Specification

Product Description: This IP-WB antibody pair set comes with one antibody for immunoprecipitation and another to detect the precipitated protein in western blot.

Reactivity: Human

Quality Control Testing: Immunoprecipitation-Western Blot (IP-WB)



Immunoprecipitation of C1QC transfected lysate using rabbit polyclonal anti-C1QC and Protein A Magnetic Bead (U0007), and immunoblotted with mouse purified polyclonal anti-C1QC.

Supplied Product: Antibody pair set content:
1. Antibody pair for IP: rabbit polyclonal anti-C1QC (300 ul)
2. Antibody pair for WB: mouse purified polyclonal anti-C1QC (50 ug)

Storage Instruction: Store reagents of the antibody pair set at -20°C or lower. Please aliquot to avoid repeated freeze thaw cycle. Reagents should be returned to -20°C storage immediately after use.

Applications

Immunoprecipitation-Western Blot

 [Protocol Download](#)

Gene Information

Entrez GeneID: [714](#)

Gene Name: C1QC

Gene Alias: C1Q-C,C1QG,FLJ27103

Gene Description: complement component 1, q subcomponent, C chain

Omim ID: [120575](#)

Gene Ontology: [Hyperlink](#)

Gene Summary: This gene encodes a major constituent of the human complement

subcomponent C1q. C1q associates with C1r and C1s in order to yield the first component of the serum complement system. A deficiency in C1q has been associated with lupus erythematosus and glomerulonephritis. C1q is composed of 18 polypeptide chains: six A-chains, six B-chains, and six C-chains. Each chain contains a collagen-like region located near the N-terminus, and a C-terminal globular region. The A-, B-, and C-chains are arranged in the order A-C-B on chromosome 1. This gene encodes the C-chain polypeptide of human complement subcomponent C1q. Alternatively spliced transcript variants that encode the same protein have been found for this gene. [provided by RefSeq]

Other Designations: OTTHUMP00000002932,OTTHUMP00000002933,OTTHUMP000000037922,complement C1q subcomponent subunit C,complement component 1, q subcomponent, gamma polypeptide

Gene Pathway

[Complement and coagulation cascades](#) [Prion diseases](#) [Systemic lupus erythematosus](#)

Related Disease

[Amyloid Neuropathies](#), [Familial Birth Weight](#) [Cardiovascular Diseases](#)
[Diabetes Mellitus, Type 2](#) [Edema](#) [Genetic Predisposition to Disease](#) [Glioblastoma](#) [Glioma](#)
[Leukemia](#) [Leukemia, Myeloid, Acute](#) [Lupus Erythematosus, Systemic](#) [Lupus Nephritis](#)
[Lymphoma, Non-Hodgkin](#) [Meningeal Neoplasms](#) [Meningioma](#)

[服務條款](#) | [隱私權政策](#) | [著作及商標](#) | [網站地圖](#)

©2016 亞諾法生技股份有限公司 Abnova Corporation. 版權所有.