



SZABO SCANDIC

Part of Europa Biosite

Produktinformation



Forschungsprodukte & Biochemikalien



Zellkultur & Verbrauchsmaterial



Diagnostik & molekulare Diagnostik



Laborgeräte & Service

Weitere Information auf den folgenden Seiten!
See the following pages for more information!



Lieferung & Zahlungsart

siehe unsere [Liefer- und Versandbedingungen](#)

Zuschläge

- Mindermengenzuschlag
- Trockeneiszuschlag
- Gefahrgutzuschlag
- Expressversand

SZABO-SCANDIC HandelsgmbH

Quellenstraße 110, A-1100 Wien

T. +43(0)1 489 3961-0

F. +43(0)1 489 3961-7

mail@szabo-scandic.com

www.szabo-scandic.com

[linkedin.com/company/szaboscandic](https://www.linkedin.com/company/szaboscandic) 

C1S (Human) IP-WB Antibody Pair

產品編號 #: H00000716-PW1

規格 : [1 Set]

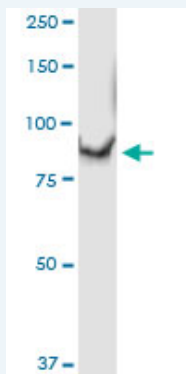
List All

Specification

Product Description: This IP-WB antibody pair set comes with one antibody for immunoprecipitation and another to detect the precipitated protein in western blot.

Reactivity: Human

Quality Control Testing: Immunoprecipitation-Western Blot (IP-WB)



Immunoprecipitation of C1S transfected lysate using rabbit polyclonal anti-C1S and Protein A Magnetic Bead ([U0007](#)), and immunoblotted with mouse purified polyclonal anti-C1S.

Supplied Product: Antibody pair set content:
 1. Antibody pair for IP: rabbit polyclonal anti-C1S (300 ul)
 2. Antibody pair for WB: mouse purified polyclonal anti-C1S (50 ug)

Storage Instruction: Store reagents of the antibody pair set at -20°C or lower. Please aliquot to avoid repeated freeze thaw cycle. Reagents should be returned to -20°C storage immediately after use.

MSDS:  [Download](#)

Applications

Immunoprecipitation-Western Blot

 [Protocol Download](#)

Gene Information

Entrez GeneID: [716](#)

Gene Name: C1S

Gene Alias: FLJ44757

Gene Description: complement component 1, s subcomponent

Omim ID: [120580](#)

Gene Ontology: [Hyperlink](#)

Application Image

Immunoprecipitation-Western Blot

Gene Summary: This gene encodes a serine protease, which is a major constituent of the human complement subcomponent C1. C1s associates with two other complement components C1r and C1q in order to yield the first component of the serum complement system. Defects in this gene are the cause of selective C1s deficiency. [provided by RefSeq]

Other Designations: basic proline-rich peptide IB-1

Gene Pathway

[Complement and coagulation cascades](#) [Systemic lupus erythematosus](#)

Related Disease

[Birth Weight](#) [Genetic Predisposition to Disease](#) [Glioblastoma](#) [Glioma](#) [Leukemia](#)
[Leukemia, Myeloid, Acute](#) [Lymphoma, Non-Hodgkin](#) [Meningeal Neoplasms](#) [Meningioma](#)

[服務條款](#) | [隱私權政策](#) | [著作及商標](#) | [網站地圖](#)

©2016 亞諾法生技股份有限公司 Abnova Corporation. 版權所有.