



# SZABO SCANDIC

Part of Europa Biosite

## Produktinformation



Forschungsprodukte & Biochemikalien



Zellkultur & Verbrauchsmaterial



Diagnostik & molekulare Diagnostik



Laborgeräte & Service

Weitere Information auf den folgenden Seiten!  
See the following pages for more information!



### Lieferung & Zahlungsart

siehe unsere [Liefer- und Versandbedingungen](#)

### Zuschläge

- Mindermengenzuschlag
- Trockeneiszuschlag
- Gefahrgutzuschlag
- Expressversand

### SZABO-SCANDIC HandelsgmbH

Quellenstraße 110, A-1100 Wien

T. +43(0)1 489 3961-0

F. +43(0)1 489 3961-7

[mail@szabo-scandic.com](mailto:mail@szabo-scandic.com)

[www.szabo-scandic.com](http://www.szabo-scandic.com)

[linkedin.com/company/szaboscandic](https://www.linkedin.com/company/szaboscandic) 

## C4BPB (Human) IP-WB Antibody Pair

Catalog # : H00000725-PW1

規格 : [ 1 Set ]

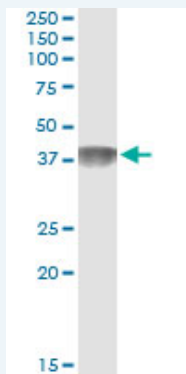
List All

### Specification

**Product Description:** This IP-WB antibody pair set comes with one antibody for immunoprecipitation and another to detect the precipitated protein in western blot.

**Reactivity:** Human

**Quality Control Testing:** Immunoprecipitation-Western Blot (IP-WB)



Immunoprecipitation of C4BPB transfected lysate using mouse monoclonal anti-C4BPB and Protein A Magnetic Bead ([U000Z](#)), and immunoblotted with rabbit polyclonal anti-C4BPB.

**Supplied Product:** Antibody pair set content:  
1. Antibody pair for IP: mouse monoclonal anti-C4BPB (300 ug)  
2. Antibody pair for WB: rabbit polyclonal anti-C4BPB (50 ul)

**Storage Instruction:** Store reagents of the antibody pair set at -20°C or lower. Please aliquot to avoid repeated freeze thaw cycle. Reagents should be returned to -20°C storage immediately after use.

**MSDS:**  [Download](#)

### Applications

Immunoprecipitation-Western Blot

 [Protocol Download](#)

### Gene Information

**Entrez GeneID:** [725](#)

**Gene Name:** C4BPB

**Gene Alias:** C4BP

**Gene Description:** complement component 4 binding protein, beta

**Omim ID:** [120831](#)

**Gene Ontology:** [Hyperlink](#)

### Application Image

Immunoprecipitation-Western Blot

**Gene Summary:** This gene encodes a member of a superfamily of proteins composed predominantly of tandemly arrayed short consensus repeats of approximately 60 amino acids. A single, unique beta-chain encoded by this gene assembles with seven identical alpha-chains into the predominant isoform of C4b-binding protein, a multimeric protein that controls activation of the complement cascade through the classical pathway. C4b-binding protein has a regulatory role in the coagulation system also, mediated through the beta-chain binding of protein S, a vitamin K-dependent protein that serves as a cofactor of activated protein C. The genes encoding both alpha and beta chains are located adjacent to each other on human chromosome 1 in the regulator of complement activation gene cluster. Alternative splicing gives rise to multiple transcript variants. [provided by RefSeq]

**Other Designations:** C4b binding protein, beta chain, OTTHUMP00000034288, OTTHUMP00000034289, OTTHUMP000034375, complement component 4 binding protein, beta chain, complement component 4-binding protein, beta

### Gene Pathway

[Complement and coagulation cascades](#)

### Related Disease

[Birth Weight](#) [Genetic Predisposition to Disease](#) [Glioblastoma](#) [Glioma](#) [Leukemia](#) [Leukemia, Myeloid, Acute Lymphoma, Non-Hodgkin](#) [Macular Degeneration](#) [Meningeal Neoplasms](#) [Meningioma](#) [Tobacco Use Disorder](#) [Venous Thrombosis](#)

[服務條款](#) | [隱私權政策](#) | [著作及商標](#) | [網站地圖](#)

©2016 亞諾法生技股份有限公司 Abnova Corporation. 版權所有.