



# SZABO SCANDIC

Part of Europa Biosite

## Produktinformation



Forschungsprodukte & Biochemikalien



Zellkultur & Verbrauchsmaterial



Diagnostik & molekulare Diagnostik



Laborgeräte & Service

Weitere Information auf den folgenden Seiten!  
See the following pages for more information!



### Lieferung & Zahlungsart

siehe unsere [Liefer- und Versandbedingungen](#)

### Zuschläge

- Mindermengenzuschlag
- Trockeneiszuschlag
- Gefahrgutzuschlag
- Expressversand

### SZABO-SCANDIC HandelsgmbH

Quellenstraße 110, A-1100 Wien

T. +43(0)1 489 3961-0

F. +43(0)1 489 3961-7

[mail@szabo-scandic.com](mailto:mail@szabo-scandic.com)

[www.szabo-scandic.com](http://www.szabo-scandic.com)

[linkedin.com/company/szaboscandic](https://www.linkedin.com/company/szaboscandic) 

## CALCR (Human) Matched Antibody Pair

Catalog # : H00000799-AP51

規格 : [ 1 Set ]

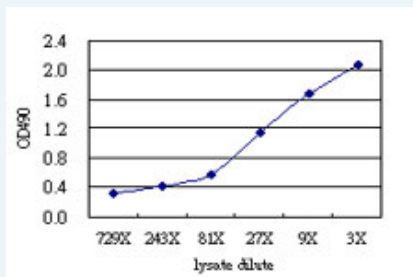
[List All](#)

### Specification

**Product Description:** This antibody pair set comes with matched antibody pair to detect and quantify protein level of human CALCR.

**Reactivity:** Human

**Quality Control Testing:** Standard curve using CALCR 293T overexpression lysate (non-denatured) as an analyte.



Sandwich ELISA detection sensitivity ranging from approximately 243x to 3x dilution of the CALCR 293T overexpression lysate (non-denatured).


**Supplied Product:** Antibody pair set content:  
 1. Capture antibody: mouse monoclonal anti-CALCR (100 ug)  
 2. Detection antibody: rabbit purified polyclonal anti-CALCR (50 ug)  
 \*Reagents are sufficient for at least 3-5 x 96 well plates using recommended protocols.

**Storage Instruction:** Store reagents of the antibody pair set at -20°C or lower. Please aliquot to avoid repeated freeze thaw cycle. Reagents should be returned to -20°C storage immediately after use.

**MSDS:**  [Download](#)

### Applications

ELISA Pair (Transfected lysate)

 [Protocol Download](#)

### Gene Information

**Entrez GeneID:** [799](#)

**Gene Name:** CALCR

**Gene Alias:** CRT,CTR,CTR1

**Gene Description:** calcitonin receptor

**Omim ID:** [114131](#), [166710](#)

**Gene Ontology:** [Hyperlink](#)

### Application Image

ELISA Pair (Transfected lysate)

**Gene Summary:** This gene encodes a high affinity receptor for the peptide hormone calcitonin and belongs to a subfamily of seven transmembrane-spanning G protein-coupled receptors. The encoded protein is involved in maintaining calcium homeostasis and in regulating osteoclast-mediated bone resorption. Polymorphisms in this gene have been associated with variations in bone mineral density and onset of osteoporosis. Alternate splicing results in multiple transcript variants. [provided by RefSeq]

**Other Designations:** OTTHUMP00000025217, OTTHUMP00000162535

### Gene Pathway

[Neuroactive ligand-receptor interaction](#)

### Related Disease

[Alveolar Bone Loss](#) [Alzheimer Disease](#) [Alzheimer disease](#) [Arthritis, Juvenile Rheumatoid](#) [Body Weight](#) [Cardiovascular Diseases](#) [Cystic Fibrosis](#) [Cystic fibrosis](#) [Diabetes Complications](#) [Diabetes Mellitus, Type 2](#) [Edema](#) [Femoral Neck Fractures](#) [Fractures, Stress](#) [Genetic Predisposition to Disease](#) [Hyperparathyroidism, Secondary](#) [Kidney Calculi](#) [Lung Neoplasms](#) [Mandibular Diseases](#) [Maxillary Diseases](#)

... see more

[服務條款](#) | [隱私權政策](#) | [著作及商標](#) | [網站地圖](#)

©2016 亞諾法生技股份有限公司 Abnova Corporation. 版權所有.