



# SZABO SCANDIC

Part of Europa Biosite

## Produktinformation



Forschungsprodukte & Biochemikalien



Zellkultur & Verbrauchsmaterial



Diagnostik & molekulare Diagnostik



Laborgeräte & Service

Weitere Information auf den folgenden Seiten!  
See the following pages for more information!



### Lieferung & Zahlungsart

siehe unsere [Liefer- und Versandbedingungen](#)

### Zuschläge

- Mindermengenzuschlag
- Trockeneiszuschlag
- Gefahrgutzuschlag
- Expressversand

### SZABO-SCANDIC HandelsgmbH

Quellenstraße 110, A-1100 Wien

T. +43(0)1 489 3961-0

F. +43(0)1 489 3961-7

[mail@szabo-scandic.com](mailto:mail@szabo-scandic.com)

[www.szabo-scandic.com](http://www.szabo-scandic.com)

[linkedin.com/company/szaboscandic](https://www.linkedin.com/company/szaboscandic) 

## CCND2 (Human) IP-WB Antibody Pair

Catalog # : H00000894-PW2

規格 : [ 1 Set ]

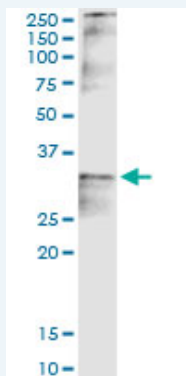
List All

### Specification

**Product Description:** This IP-WB antibody pair set comes with one antibody for immunoprecipitation and another to detect the precipitated protein in western blot.

**Reactivity:** Human

**Quality Control Testing:** Immunoprecipitation-Western Blot (IP-WB)



Immunoprecipitation of CCND2 transfected lysate using rabbit polyclonal anti-CCND2 and Protein A Magnetic Bead (U0007), and immunoblotted with mouse purified polyclonal anti-CCND2.

**Supplied Product:** Antibody pair set content:  
 1. Antibody pair for IP: rabbit polyclonal anti-CCND2 (300 ul)  
 2. Antibody pair for WB: mouse purified polyclonal anti-CCND2 (50 ug)

**Storage Instruction:** Store reagents of the antibody pair set at -20°C or lower. Please aliquot to avoid repeated freeze thaw cycle. Reagents should be returned to -20°C storage immediately after use.

### Applications

Immunoprecipitation-Western Blot

 [Protocol Download](#)

### Gene Information

**Entrez GeneID:** [894](#)

**Gene Name:** CCND2

**Gene Alias:** KIAK0002, MGC102758

**Gene Description:** cyclin D2

**Omim ID:** [123833](#)

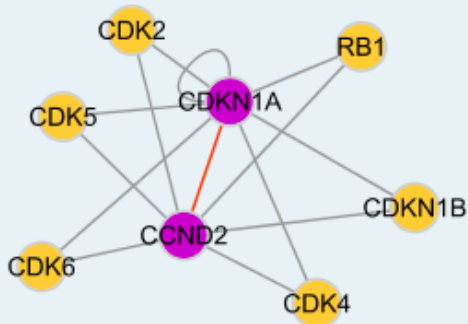
**Gene Ontology:** [Hyperlink](#)

**Gene Summary:** The protein encoded by this gene belongs to the highly conserved

cyclin family, whose members are characterized by a dramatic periodicity in protein abundance through the cell cycle. Cyclins function as regulators of CDK kinases. Different cyclins exhibit distinct expression and degradation patterns which contribute to the temporal coordination of each mitotic event. This cyclin forms a complex with and functions as a regulatory subunit of CDK4 or CDK6, whose activity is required for cell cycle G1/S transition. This protein has been shown to interact with and be involved in the phosphorylation of tumor suppressor protein Rb. Knockout studies of the homologous gene in mouse suggest the essential roles of this gene in ovarian granulosa and germ cell proliferation. High level expression of this gene was observed in ovarian and testicular tumors. [provided by RefSeq]

**Other Designations:** G1/S-specific cyclin D2

### Interactome



### Gene Pathway

[Cell cycle](#) [Focal adhesion](#) [Jak-STAT signaling pathway](#) [p53 signaling pathway](#)  
[Wnt signaling pathway](#)

### Related Disease

[Breast cancer](#) [Breast Neoplasms](#) [Carcinoma, Hepatocellular](#) [Diabetes Mellitus, Type 2](#)  
[Genetic Predisposition to Disease](#) [Hepatitis B](#) [Kidney Failure, Chronic](#) [Liver Neoplasms](#)  
[Narcolepsy](#) [Neoplasm Invasiveness](#) [Ovarian cancer](#) [Ovarian Neoplasms](#)

[服務條款](#) | [隱私權政策](#) | [著作及商標](#) | [網站地圖](#)

©2016 亞諾法生技股份有限公司 Abnova Corporation. 版權所有.