



SZABO SCANDIC

Part of Europa Biosite

Produktinformation



Forschungsprodukte & Biochemikalien



Zellkultur & Verbrauchsmaterial



Diagnostik & molekulare Diagnostik



Laborgeräte & Service

Weitere Information auf den folgenden Seiten!
See the following pages for more information!



Lieferung & Zahlungsart

siehe unsere [Liefer- und Versandbedingungen](#)

Zuschläge

- Mindermengenzuschlag
- Trockeneiszuschlag
- Gefahrgutzuschlag
- Expressversand

SZABO-SCANDIC HandelsgmbH

Quellenstraße 110, A-1100 Wien

T. +43(0)1 489 3961-0

F. +43(0)1 489 3961-7

mail@szabo-scandic.com

www.szabo-scandic.com

[linkedin.com/company/szaboscandic](https://www.linkedin.com/company/szaboscandic) 

CDC25C (Human) IP-WB Antibody Pair

Catalog # : H00000995-PW1

規格 : [1 Set]

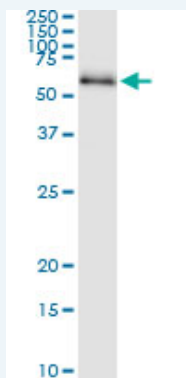
List All

Specification

Product Description: This IP-WB antibody pair set comes with one antibody for immunoprecipitation and another to detect the precipitated protein in western blot.

Reactivity: Human

Quality Control Testing: Immunoprecipitation-Western Blot (IP-WB)



Immunoprecipitation of CDC25C transfected lysate using rabbit polyclonal anti-CDC25C and Protein A Magnetic Bead ([U0007](#)), and immunoblotted with mouse polyclonal anti-CDC25C.

Supplied Product: Antibody pair set content:
1. Antibody pair for IP: rabbit polyclonal anti-CDC25C (300 ul)
2. Antibody pair for WB: mouse polyclonal anti-CDC25C (50 ul)

Storage Instruction: Store reagents of the antibody pair set at -20°C or lower. Please aliquot to avoid repeated freeze thaw cycle. Reagents should be returned to -20°C storage immediately after use.

MSDS:  [Download](#)

Applications

Immunoprecipitation-Western Blot

 [Protocol Download](#)

Gene Information

Entrez GeneID: [995](#)

Gene Name: CDC25C

Gene Alias: CDC25

Gene Description: cell division cycle 25 homolog C (S. pombe)

Omim ID: [157680](#)

Gene Ontology: [Hyperlink](#)

Application Image

Immunoprecipitation-Western Blot

Gene Summary: This gene is highly conserved during evolution and it plays a key role in the regulation of cell division. The encoded protein is a tyrosine phosphatase and belongs to the Cdc25 phosphatase family. It directs dephosphorylation of cyclin B-bound CDC2 and triggers entry into mitosis. It is also thought to suppress p53-induced growth arrest. Multiple alternatively spliced transcript variants of this gene have been described, however, the full-length nature of many of them is not known. [provided by RefSeq]

Other Designations: cell division cycle 25C, cell division cycle 25C protein, dual specificity phosphatase CDC25C, m-phase inducer phosphatase 3, mitosis inducer CDC25, phosphotyrosine phosphatase

Gene Pathway

[Cell cycle](#)

Related Disease

[Adenocarcinoma](#) [Esophageal Neoplasms](#) [Genetic Predisposition to Disease](#)
[Lung Neoplasms](#) [Pulmonary Disease, Chronic Obstructive](#) [Urinary Bladder Neoplasms](#)
[Werner syndrome](#)

[服務條款](#) | [隱私權政策](#) | [著作及商標](#) | [網站地圖](#)

©2016 亞諾法生技股份有限公司 Abnova Corporation. 版權所有.