



# SZABO SCANDIC

Part of Europa Biosite

## Produktinformation



Forschungsprodukte & Biochemikalien



Zellkultur & Verbrauchsmaterial



Diagnostik & molekulare Diagnostik



Laborgeräte & Service

Weitere Information auf den folgenden Seiten!  
See the following pages for more information!



### Lieferung & Zahlungsart

siehe unsere [Liefer- und Versandbedingungen](#)

### Zuschläge

- Mindermengenzuschlag
- Trockeneiszuschlag
- Gefahrgutzuschlag
- Expressversand

### SZABO-SCANDIC HandelsgmbH

Quellenstraße 110, A-1100 Wien

T. +43(0)1 489 3961-0

F. +43(0)1 489 3961-7

[mail@szabo-scandic.com](mailto:mail@szabo-scandic.com)

[www.szabo-scandic.com](http://www.szabo-scandic.com)

[linkedin.com/company/szaboscandic](https://www.linkedin.com/company/szaboscandic) 

## CDK2 (Human) IP-WB Antibody Pair

Catalog # : H00001017-PW1

規格 : [ 1 Set ]

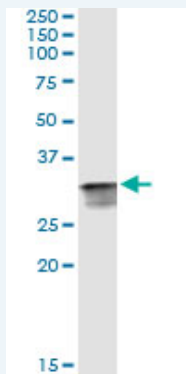
[List All](#)

### Specification

**Product Description:** This IP-WB antibody pair set comes with one antibody for immunoprecipitation and another to detect the precipitated protein in western blot.

**Reactivity:** Human

**Quality Control Testing:** Immunoprecipitation-Western Blot (IP-WB)



Immunoprecipitation of CDK2 transfected lysate using mouse monoclonal anti-CDK2 and Protein A Magnetic Bead ([U0007](#)), and immunoblotted with rabbit polyclonal anti-CDK2.

**Supplied Product:** Antibody pair set content:  
 1. Antibody pair for IP: mouse monoclonal anti-CDK2 (300 ul)  
 2. Antibody pair for WB: rabbit polyclonal anti-CDK2 (50 ul)

**Storage Instruction:** Store reagents of the antibody pair set at -20°C or lower. Please aliquot to avoid repeated freeze thaw cycle. Reagents should be returned to -20°C storage immediately after use.

**MSDS:**  [Download](#)

### Applications

**Immunoprecipitation-Western Blot**

 [Protocol Download](#)

### Gene Information

**Entrez GeneID:** [1017](#)

**Gene Name:** CDK2

**Gene Alias:** p33(CDK2)

**Gene Description:** cyclin-dependent kinase 2

**Omim ID:** [116953](#)

**Gene Ontology:** [Hyperlink](#)

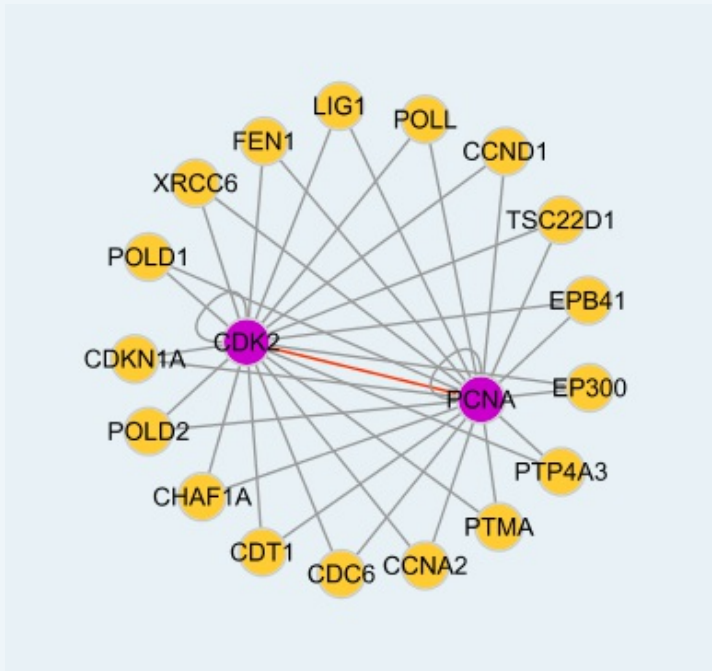
### Application Image

Immunoprecipitation-Western Blot

**Gene Summary:** The protein encoded by this gene is a member of the Ser/Thr protein kinase family. This protein kinase is highly similar to the gene products of *S. cerevisiae* cdc28, and *S. pombe* cdc2. It is a catalytic subunit of the cyclin-dependent protein kinase complex, whose activity is restricted to the G1-S phase, and essential for cell cycle G1/S phase transition. This protein associates with and regulated by the regulatory subunits of the complex including cyclin A or E, CDK inhibitor p21Cip1 (CDKN1A) and p27Kip1 (CDKN1B). Its activity is also regulated by its protein phosphorylation. Two alternatively spliced variants and multiple transcription initiation sites of this gene have been reported. [provided by RefSeq]

**Other Designations:** cdc2-related protein kinase, cell division kinase 2, p33 protein kinase

### Interactome



### Gene Pathway

[Cell cycle](#) [p53 signaling pathway](#) [Pathways in cancer](#) [Prostate cancer](#)  
[Small cell lung cancer](#)

### Related Disease

[Azoospermia](#) [Breast cancer](#) [Breast Neoplasms](#) [Chromosome Aberrations](#)  
[Diabetes Mellitus, Type 1](#) [Genetic Predisposition to Disease](#) [Kidney Failure, Chronic](#)  
[Lymphoma, Mantle-Cell](#) [Neoplasm Invasiveness](#) [Ovarian cancer](#) [Ovarian Neoplasms](#)

[服務條款](#) | [隱私權政策](#) | [著作及商標](#) | [網站地圖](#)

©2016 亞諾法生技股份有限公司 Abnova Corporation. 版權所有.