



SZABO SCANDIC

Part of Europa Biosite

Produktinformation



Forschungsprodukte & Biochemikalien



Zellkultur & Verbrauchsmaterial



Diagnostik & molekulare Diagnostik



Laborgeräte & Service

Weitere Information auf den folgenden Seiten!
See the following pages for more information!



Lieferung & Zahlungsart

siehe unsere [Liefer- und Versandbedingungen](#)

Zuschläge

- Mindermengenzuschlag
- Trockeneiszuschlag
- Gefahrgutzuschlag
- Expressversand

SZABO-SCANDIC HandelsgmbH

Quellenstraße 110, A-1100 Wien

T. +43(0)1 489 3961-0

F. +43(0)1 489 3961-7

mail@szabo-scandic.com

www.szabo-scandic.com

[linkedin.com/company/szaboscandic](https://www.linkedin.com/company/szaboscandic) 

CDK5 (Human) IP-WB Antibody Pair

Catalog # : H00001020-PW1

規格 : [1 Set]

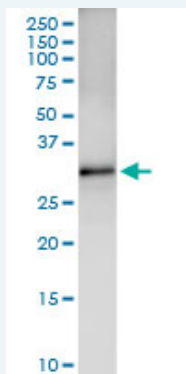
List All

Specification

Product Description: This IP-WB antibody pair set comes with one antibody for immunoprecipitation and another to detect the precipitated protein in western blot.

Reactivity: Human

Quality Control Testing: Immunoprecipitation-Western Blot (IP-WB)



Immunoprecipitation of CDK5 transfected lysate using rabbit polyclonal anti-CDK5 and Protein A Magnetic Bead ([U0007](#)), and immunoblotted with mouse polyclonal anti-CDK5.

Supplied Product: Antibody pair set content:
 1. Antibody pair for IP: rabbit polyclonal anti-CDK5 (300 ul)
 2. Antibody pair for WB: mouse polyclonal anti-CDK5 (50 ul)

Storage Instruction: Store reagents of the antibody pair set at -20°C or lower. Please aliquot to avoid repeated freeze thaw cycle. Reagents should be returned to -20°C storage immediately after use.

MSDS:  [Download](#)

Applications

Immunoprecipitation-Western Blot

 [Protocol Download](#)

Gene Information

Entrez GeneID: [1020](#)

Gene Name: CDK5

Gene Alias: PSSALRE

Gene Description: cyclin-dependent kinase 5

Omim ID: [123831](#)

Gene Ontology: [Hyperlink](#)

Application Image

Immunoprecipitation-Western Blot

Other [protein kinase CDK5 splicing](#)

Designations:

Gene Pathway

[Alzheimer's disease](#) [Axon guidance](#)

Related Disease

[Adenocarcinoma](#) [Alzheimer Disease](#) [Alzheimer disease](#) [Cardiovascular Diseases](#)
[Diabetes Mellitus, Type 2](#) [Edema](#) [Esophageal Neoplasms](#)
[Genetic Predisposition to Disease](#) [Kidney Failure, Chronic](#) [Lung Neoplasms](#) [Obesity](#)
[Pulmonary Disease, Chronic Obstructive](#) [Tobacco Use Disorder](#)
[Urinary Bladder Neoplasms](#) [Werner syndrome](#)

[服務條款](#) | [隱私權政策](#) | [著作及商標](#) | [網站地圖](#)

©2016 亞諾法生技股份有限公司 Abnova Corporation. 版權所有.