



SZABO SCANDIC

Part of Europa Biosite

Produktinformation



Forschungsprodukte & Biochemikalien



Zellkultur & Verbrauchsmaterial



Diagnostik & molekulare Diagnostik



Laborgeräte & Service

Weitere Information auf den folgenden Seiten!
See the following pages for more information!



Lieferung & Zahlungsart

siehe unsere [Liefer- und Versandbedingungen](#)

Zuschläge

- Mindermengenzuschlag
- Trockeneiszuschlag
- Gefahrgutzuschlag
- Expressversand

SZABO-SCANDIC Handels GmbH

Quellenstraße 110, A-1100 Wien

T. +43(0)1 489 3961-0

F. +43(0)1 489 3961-7

mail@szabo-scandic.com

www.szabo-scandic.com

[linkedin.com/company/szaboscandic](https://www.linkedin.com/company/szaboscandic) 

CDK6 (Human) IP-WB Antibody Pair

Catalog # : H00001021-PW1

規格 : [1 Set]

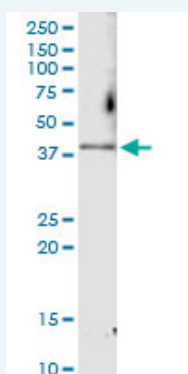
[List All](#)

Specification

Product Description: This IP-WB antibody pair set comes with one antibody for immunoprecipitation and another to detect the precipitated protein in western blot.

Reactivity: Human

Quality Control Testing: Immunoprecipitation-Western Blot (IP-WB)



Immunoprecipitation of CDK6 transfected lysate using rabbit polyclonal anti-CDK6 and Protein A Magnetic Bead ([U0007](#)), and immunoblotted with mouse polyclonal anti-CDK6.


Supplied Product: Antibody pair set content:
1. Antibody pair for IP: rabbit polyclonal anti-CDK6 (300 ul)
2. Antibody pair for WB: mouse polyclonal anti-CDK6 (50 ul)

Storage Instruction: Store reagents of the antibody pair set at -20°C or lower. Please aliquot to avoid repeated freeze thaw cycle. Reagents should be returned to -20°C storage immediately after use.

MSDS:  [Download](#)

Applications

Immunoprecipitation-Western Blot

 [Protocol Download](#)

Gene Information

Entrez GeneID: [1021](#)

Gene Name: CDK6

Gene Alias: MGC59692, PLSTIRE, STQTL11

Gene Description: cyclin-dependent kinase 6

Omim ID: [603368](#)

Gene Ontology: [Hyperlink](#)

Application Image

Immunoprecipitation-Western Blot

Gene Summary: The protein encoded by this gene is a member of the cyclin-dependent protein kinase (CDK) family. CDK family members are highly similar to the gene products of *Saccharomyces cerevisiae cdc28*, and *Schizosaccharomyces pombe cdc2*, and are known to be important regulators of cell cycle progression. This kinase is a catalytic subunit of the protein kinase complex that is important for cell cycle G1 phase progression and G1/S transition. The activity of this kinase first appears in mid-G1 phase, which is controlled by the regulatory subunits including D-type cyclins and members of INK4 family of CDK inhibitors. This kinase, as well as CDK4, has been shown to phosphorylate, and thus regulate the activity of, tumor suppressor protein Rb. [provided by RefSeq]

Other cell division protein kinase 6

Designations:

Gene Pathway

[Cell cycle](#) [Chronic myeloid leukemia](#) [Glioma](#) [Melanoma](#) [Non-small cell lung cancer](#) [p53 signaling pathway](#) [Pancreatic cancer](#) [Pathways in cancer](#) [Small cell lung cancer](#)

Related Disease

[Adenocarcinoma](#) [Arthritis, Juvenile Rheumatoid](#) [Arthritis, Rheumatoid](#) [Autoimmune Diseases](#) [Breast cancer](#) [Breast Neoplasms](#) [Carcinoma, Medullary](#) [Carcinoma, Squamous Cell](#) [Cardiovascular Diseases](#) [Crohn Disease](#) [Crohn's disease](#) [Diabetes Mellitus, Type 1](#) [Diabetes Mellitus, Type 2](#) [Disease Progression](#) [Edema](#) [Esophageal Neoplasms](#) [Genetic Predisposition to Disease](#) [Growth Disorders](#) [Head and Neck Neoplasms](#)

... see more

[服務條款](#) | [隱私權政策](#) | [著作及商標](#) | [網站地圖](#)

©2016 亞諾法生技股份有限公司 Abnova Corporation. 版權所有.