



SZABO SCANDIC

Part of Europa Biosite

Produktinformation



Forschungsprodukte & Biochemikalien



Zellkultur & Verbrauchsmaterial



Diagnostik & molekulare Diagnostik



Laborgeräte & Service

Weitere Information auf den folgenden Seiten!
See the following pages for more information!



Lieferung & Zahlungsart

siehe unsere [Liefer- und Versandbedingungen](#)

Zuschläge

- Mindermengenzuschlag
- Trockeneiszuschlag
- Gefahrgutzuschlag
- Expressversand

SZABO-SCANDIC HandelsgmbH

Quellenstraße 110, A-1100 Wien

T. +43(0)1 489 3961-0

F. +43(0)1 489 3961-7

mail@szabo-scandic.com

www.szabo-scandic.com

[linkedin.com/company/szaboscandic](https://www.linkedin.com/company/szaboscandic) 

CHN1 (Human) Matched Antibody Pair

Catalog # : H00001123-AP21

規格 : [1 Set]

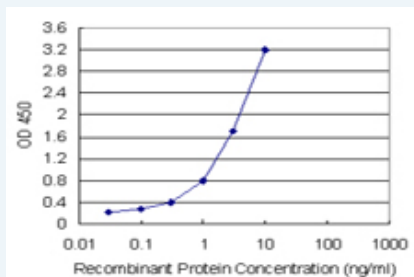
[List All](#)

Specification

Product Description: This antibody pair set comes with matched antibody pair to detect and quantify protein level of human CHN1.

Reactivity: Human

Quality Control Testing: Standard curve using recombinant protein (H00001123-P01) as an analyte.



Sandwich ELISA detection sensitivity ranging from 0.1 ng/ml to 100 ng/ml.

Supplied Product: Antibody pair set content:
 1. Capture antibody: rabbit MaxPab® affinity purified polyclonal anti-CHN1 (100 ug)
 2. Detection antibody: mouse polyclonal anti-CHN1 (40 ul)
 *Reagents are sufficient for at least 3-5 x 96 well plates using recommended protocols.

Storage Instruction: Store reagents of the antibody pair set at -20°C or lower. Please aliquot to avoid repeated freeze thaw cycle. Reagents should be returned to -20°C storage immediately after use.

MSDS:  [Download](#)

Applications

ELISA Pair (Recombinant protein)

 [Protocol Download](#)

Gene Information

Entrez GeneID: [1123](#)

Gene Name: CHN1

Gene Alias: ARHGAP2, CHN, DURS2, RHOGAP2

Gene Description: chimerin (chimaerin) 1

Omim ID: [118423](#)

Gene Ontology: [Hyperlink](#)

Application Image

ELISA Pair (Recombinant protein)

Gene Summary: This gene encodes GTPase-activating protein for p21-rac and a phorbol ester receptor. It plays an important role in ocular motor axon pathfinding. Heterozygous missense mutations in this gene cause Duane's retraction syndrome 2 (DURS2). Multiple transcript variants encoding different isoforms have been found for this gene. [provided by RefSeq]

Other Designations: A-chimaerin,Chimerin 1 (GTPase-activating protein, rho, 2),Rho GTPase-activating protein 2,a2-chimaerin,alpha-chimerin,n-chimerin

Related Disease

[Alcoholism](#) [Conduct Disorder](#) [Tobacco Use Disorder](#)

[服務條款](#) | [隱私權政策](#) | [著作及商標](#) | [網站地圖](#)

©2016 亞諾法生技股份有限公司 Abnova Corporation. 版權所有.