



# SZABO SCANDIC

Part of Europa Biosite

## Produktinformation



Forschungsprodukte & Biochemikalien



Zellkultur & Verbrauchsmaterial



Diagnostik & molekulare Diagnostik



Laborgeräte & Service

Weitere Information auf den folgenden Seiten!  
See the following pages for more information!



### Lieferung & Zahlungsart

siehe unsere [Liefer- und Versandbedingungen](#)

### Zuschläge

- Mindermengenzuschlag
- Trockeneiszuschlag
- Gefahrgutzuschlag
- Expressversand

### SZABO-SCANDIC HandelsgmbH

Quellenstraße 110, A-1100 Wien

T. +43(0)1 489 3961-0

F. +43(0)1 489 3961-7

[mail@szabo-scandic.com](mailto:mail@szabo-scandic.com)

[www.szabo-scandic.com](http://www.szabo-scandic.com)

[linkedin.com/company/szaboscandic](https://www.linkedin.com/company/szaboscandic) 

## CLTB (Human) IP-WB Antibody Pair

Catalog # : H00001212-PW2

規格 : [ 1 Set ]

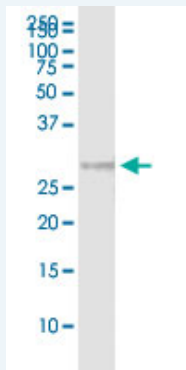
List All

### Specification

**Product Description:** This IP-WB antibody pair set comes with one antibody for immunoprecipitation and another to detect the precipitated protein in western blot.

**Reactivity:** Human

**Quality Control Testing:** Immunoprecipitation-Western Blot (IP-WB)



Immunoprecipitation of CLTB transfected lysate using rabbit polyclonal anti-CLTB and Protein A Magnetic Bead ([U0007](#)), and immunoblotted with mouse purified polyclonal anti-CLTB.

**Supplied Product:** Antibody pair set content:  
 1. Antibody pair for IP: rabbit polyclonal anti-CLTB (300 ul)  
 2. Antibody pair for WB: mouse purified polyclonal anti-CLTB (50 ug)

**Storage Instruction:** Store reagents of the antibody pair set at -20°C or lower. Please aliquot to avoid repeated freeze thaw cycle. Reagents should be returned to -20°C storage immediately after use.

### Applications

Immunoprecipitation-Western Blot

 [Protocol Download](#)

### Gene Information

**Entrez GeneID:** [1212](#)

**Gene Name:** CLTB

**Gene Alias:** LCB

**Gene Description:** clathrin, light chain (Lcb)

**Omim ID:** [118970](#)

**Gene Ontology:** [Hyperlink](#)

**Gene Summary:** Clathrin is a large, soluble protein composed of heavy and light chains.

### Application Image

Immunoprecipitation-Western Blot

It functions as the main structural component of the lattice-type cytoplasmic face of coated pits and vesicles which entrap specific macromolecules during receptor-mediated endocytosis. This gene encodes one of two clathrin light chain proteins which are believed to function as regulatory elements. Alternative splicing results in multiple transcript variants. [provided by RefSeq]

---

**Other Designations:** clathrin, light polypeptide,clathrin, light polypeptide (Lcb)

---

**Gene Pathway**

---

[Endocytosis](#) [Huntington's disease](#) [Lysosome](#)

**Related Disease**

---

[Cardiovascular Diseases](#) [Diabetes Mellitus, Type 2](#) [Edema](#)

---

[服務條款](#) | [隱私權政策](#) | [著作及商標](#) | [網站地圖](#)

©2016 亞諾法生技股份有限公司 Abnova Corporation. 版權所有.